



Unicode Font Package for SAP®

Operating Instructions

-
- 1 Unicode Font Package for SAP®
 - 2 Uploading / Checking Fonts
 - 3 Using Downloader V2.0
 - 4 Appendix

Introduction

This manual contains detailed instructions and notes on the operation and use of this machine. For your safety and benefit, read this manual carefully before using the machine. Keep this manual in a handy place for quick reference.

Important

Contents of this manual are subject to change without prior notice. In no event will the company be liable for direct, indirect, special, incidental, or consequential damages as a result of handling or operating the machine.

Notes

Some illustrations in this manual might be slightly different from the machine.

Certain options might not be available in some countries. For details, please contact your local dealer.

Trademarks

Microsoft, Windows, Windows Server are registered trademarks or trademarks of Microsoft Corporation, in the United States and other countries.

Monotype and WorldType are trademarks of Monotype Imaging, Inc. registered in the United States Patent and Trademark Office and may be registered in certain jurisdictions.

Andale is a trademark of The Monotype Corporation registered in the U.S. Patent & Trademark Office and may be registered in certain jurisdictions.

SAP® is the trademark or registered trademark of SAP AG in Germany and in several other countries.

PostScript® is registered trademarks of Adobe Systems Incorporated.

PCL® is registered trademark of Hewlett-Packard Company.

Other product names used herein are for identification purposes only and might be trademarks of their respective companies. We disclaim any and all rights to those marks.

The product names of the Windows operating systems are as follows:

- The product names of Windows® 2000 are as follows:
Microsoft® Windows® 2000 Professional
Microsoft® Windows® 2000 Server
- The product names of Windows® XP are as follows:
Microsoft® Windows® XP Home Edition
Microsoft® Windows® XP Professional
- The product names of Windows Server™ 2003 are as follows:
Microsoft® Windows Server™ 2003 Standard Edition
Microsoft® Windows Server™ 2003 Enterprise Edition
Microsoft® Windows Server™ 2003 Web Edition

Copyright

Andale is a copyright of Monotype Imaging, Inc. 1998 - 2010.

Downloader V2.0 is a copyright of RICOH COMPANY, LTD. 2010.

How to Read This Manual

Symbols

This manual uses the following symbols:

WARNING:

Indicates important safety notes.

Ignoring these notes could result in serious injury or death. Be sure to read these notes. They can be found in the "Safety Information" section of About This Machine.

CAUTION:

Indicates important safety notes.

Ignoring these notes could result in moderate or minor injury, or damage to the machine or to property. Be sure to read these notes. They can be found in the "Safety Information" section of About This Machine.

Important

Indicates points to pay attention to when using the machine, and explanations of likely causes of paper misfeeds, damage to originals, or loss of data. Be sure to read these explanations.

Preparation

This symbol indicates information or preparations required prior to operating.

Note

Indicates supplementary explanations of the machine's functions, and instructions on resolving user errors.

Limitation

This symbol indicates numerical limits, functions that cannot be used together, or conditions in which a particular function cannot be used.

Reference

This symbol is located at the end of sections. It indicates where you can find further relevant information.

[]

Indicates the names of keys that appear on the machine's display panel.

[]

Indicates the names of keys on the machine's control panel.

TABLE OF CONTENTS

How to Read This Manual	i
Symbols	i
1. Unicode Font Package for SAP®	
<hr/>	
Overview	1
CD-ROM Components	2
2. Uploading / Checking Fonts	
<hr/>	
Uploading Fonts.....	3
Checking Uploaded Fonts.....	4
Checking Fonts Using Downloader V2.0	4
Checking Fonts Using a SAP Script Sample	4
Checking Fonts Using a PCL Sample File	5
3. Using Downloader V2.0	
<hr/>	
System Requirements	7
Main Downloader V2.0 Dialog Boxes	8
The [Downloader V2.0] Dialog Box	8
The [Resource File List] Dialog Box.....	10
Main Downloader V2.0 Functions.....	12
Uploading Fonts to a Printer	12
Exporting Fonts	13
Deleting Fonts	14
Other Downloader V2.0 Functions	15
Outputting Font Lists	15
4. Appendix	
<hr/>	
FTP Transmission.....	17
Error Messages	18
INDEX.....	19

1. Unicode Font Package for SAP®

Overview

Monotype Andale WorldType Font includes four types of fonts that contain about 50,000 characters for Unicode V3.0.

Uploading Monotype Andale WorldType Font to printers allows you to print characters from various languages using SAP systems.

Note

- A SAP Device Type is required to print documents from SAP systems. You can obtain the SAP Device Type from our website.

Reference

For details about uploading fonts, see p.12 “Uploading Fonts to a Printer”.

For details about how to configure the Device Type, see the manual supplied with the Device Type.

CD-ROM Components

The CD-ROM includes the following files:

Folder/File name	Description
DownloaderV2.0.exe	— Downloader V2.0
SAMPLE	ZAUSAMPLE.ITSF SAP script sample file
	ZAUSAMPLE.PRN PCL sample file
FONT	ANMNLJ.ttf True Type font data for Japanese
	ANMNLK.ttf True Type font data for Korean
	ANMNL.S.ttf True Type font data for Simplified Chinese
	ANMNL.T.ttf True Type font data for Traditional Chinese
OperatingInstructions.pdf	— PDF Manual
Readme.txt	— Readme text file

2. Uploading / Checking Fonts

Uploading Fonts

Upload Monotype Andale WorldType Font from the CD-ROM to a printer. Start Downloader V2.0, and then upload one of the following files:

- ANMNLJ.ttf
- ANMNLK.ttf
- ANMNLS.ttf
- ANMNLT.ttf

Note

- To print multiple languages, such as Japanese and Korean, upload the font files required for those languages.

Reference

For details about uploading fonts, see p.12 “Uploading Fonts to a Printer”.

Checking Uploaded Fonts

Check the fonts have downloaded properly.

Checking Fonts Using Downloader V2.0

2

❖ File List Monitor

Start Downloader V2.0, and then check the font files you have uploaded appear in **[File List Monitor]**.

❖ Print a font list

Start Downloader V2.0, print a PCL font list, and then check the fonts you have uploaded appear in the list.

🔍 Reference

For details about File List Monitor, see p.8 “Main Downloader V2.0 Dialog Boxes”.

For details about how to print font lists, see p.15 “Other Downloader V2.0 Functions”.

Checking Fonts Using a SAP Script Sample

Use a SAP script sample to check the fonts have uploaded properly.

To check fonts, print ZAUSAMPLE.ITS supplied on the CD-ROM.

🔍 Reference

For details about CD-ROM components, see p.2 “CD-ROM Components”.

1 Log on to the SAP system.

2 Run transaction SO10.

3 Enter the name of an existing document, and then click **[Change]**.

4 On the main menu, point to **[Text]**, and then click **[Save as...]**.

5 Specify the new name, and then click **[Save]**.

6 Delete all lines.

Press F2 to mark the beginning of the file. Press F2 again to mark the end of the file. On the main menu, point to **[Edit]**, point to **[Selected area]**, and then click **[Delete]**.

7 On the main menu, point to **[Text]**, and then click **[Upload...]**.

8 Select **[ITF]** as the file format.

9 Specify the path to the source file, and then click **[OK]**.

Checking Fonts Using a PCL Sample File

Use a PCL sample file to check the fonts have uploaded properly.

To check fonts, print ZAUSAMPLE.PRN supplied on the CD-ROM.

- 1** Open the command prompt, and then log on to the printer using an FTP command.
- 2** Change the remote directory to the directory where the file will be transferred to.
- 3** Using the "lcd" command, change the local directory to the directory where the file will be transferred from.
- 4** Enter binary mode.
- 5** Transfer the file using the "put" command. File transfer can takes several minutes.

3. Using Downloader V2.0

Downloader V2.0 allows you to upload fonts to a printer and print documents from Unicode-supporting SAP systems.

Furthermore, using Downloader V2.0, you can delete uploaded fonts from the printer or download them to the computer. You can also monitor the directory information on a printer's hard disk or Secure Digital card (SD card) from the computer and check which fonts are uploaded.

Note

Downloader V2.0 uses English as its display language.

System Requirements

Downloader V2.0 requires the following environment:

❖ **Operating System**

- Windows 2000 Professional
- Windows 2000 Server
- Windows XP Professional
- Windows XP Home Edition
- Windows Server 2003 Standard Edition
- Windows Server 2003 Enterprise Edition
- Windows Server 2003 Web Edition

❖ **Network Protocol**

- TCP/IP

❖ **Port**

- 9100 (printer connection)

❖ **Supported Printers**

For details about printers Downloader V2.0 supports, contact your local dealer or sales representative.

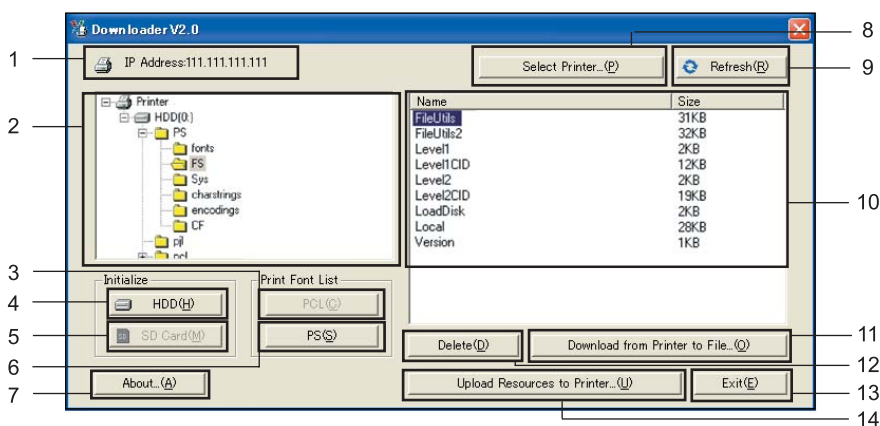
Main Downloader V2.0 Dialog Boxes

This section explains the two main dialog boxes that appear when you use Downloader V2.0 functions.

The [Downloader V2.0] Dialog Box

The [Downloader V2.0] dialog box appears first when you start Downloader V2.0. Use this dialog box to perform the main Downloader V2.0 operations.

3



ARI003S

1. IP Address / Host Name

Displays the IP address or host name of the currently connected printer.

2. Directory Monitor

Displays a tree that containing the directory information of the currently connected printer.

3. Print Font List [PCL]

Click to print a list of the PCL fonts in the currently connected printer. For details, see p.15 "Outputting Font Lists".

4. Initialize [HDD]

Click to initialize fonts on the hard disk of the currently connected printer.

Important

- The initialization function deletes all font and macro files on the selected hard disk. Note that font and macro files in formats not supported by Downloader V2.0 are also deleted.

5. Initialize [SD Card]

Click to initialize fonts on the SD card of the currently connected printer.

Important

- The initialization function deletes all font and macro files on the selected SD card. Note that font and macro files in formats not supported by Downloader V2.0 are also deleted.

6. Print Font List [PS]

Click to print a list of the PostScript fonts in the currently connected printer. For details, see p.15 “Outputting Font Lists”.

7. [About...]

Click to display the Downloader V2.0 version and copyright information in another dialog box.

8. [Select Printer...]

Click to specify the printer you want to connect to or change the currently connected printer.

9. [Refresh]

Click to update the directory information on the hard disk of the currently connected printer.

Note

- You cannot use the functions described in 4, 5, 6, and 11 with Unicode Font Package for SAP®.

10. File List Monitor

Displays details about the folder selected in [Directory Monitor].

11. [Download from Printer to File...]

Click to download a file selected in [File List Monitor] to the computer.

Limitation

- Large files might not download correctly. In this case, change the timeout interval to use when the printer is expecting data from the network. For details, see Network Guide supplied with the printer.

12. [Delete]

Click to delete a file selected in [File List Monitor]. For details, see p.14 “Deleting Fonts”.

13. [Exit]

Click to close Downloader V2.0.

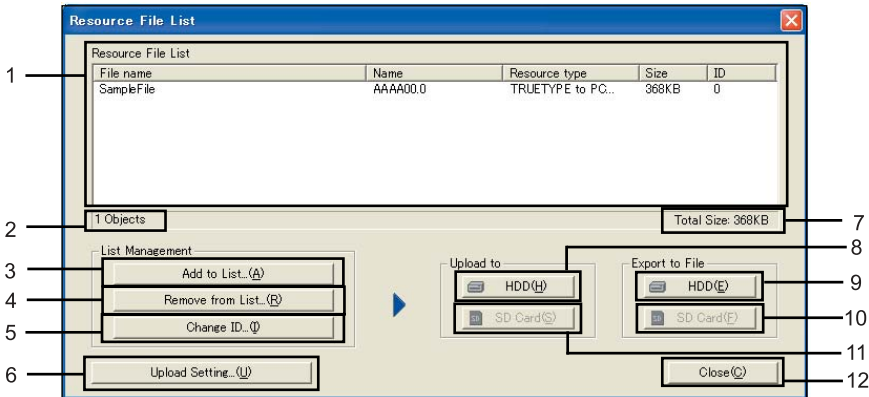
14. [Upload Resources to Printer...]

Click to display the [Resource File List] dialog box where you can make settings for fonts and upload them to the currently connected printer. For details, see p.10 “The [Resource File List] Dialog Box” and p.12 “Uploading Fonts to a Printer”.

The [Resource File List] Dialog Box

Select font files in the **[Resource File List]** dialog box to upload them to a printer.

You can also delete font files from **[Resource File List]**, or change a selected file's ID.



ARI004S

1. Resource File List

Displays font files added using **[Add to List...]**.

2. Object

Displays the number of files displayed in **[Resource File List]**.

3. [Add to List...]

Click to select files you want to add to **[Resource File List]**.

4. [Remove from List...]

Click to delete files selected in **[Resource File List]**.

5. [Change ID...]

Click to change the ID of a file selected in **[Resource File List]**.

📍 Limitation

- Specify an ID in the range of 0 to 32767 .

6. [Upload Setting...]

Click to make optional settings for uploading fonts to a printer.

7. Total Size

Displays the total size of all files displayed in **[Resource File List]**.

8. Upload to [HDD]

Click to upload all files displayed in **[Resource File List]** to a printer's hard disk.

9. Export to File [HDD]

Click to export all files displayed in **[Resource File List]** to the computer's hard disk.

10. Export to File [SD Card]

Click to export all files displayed in **[Resource File List]** to the computer's SD card.

📍 Limitation

- PostScript font files cannot be exported to SD cards.

11. Upload to [SD Card]

Click to upload all files displayed in **[Resource File List]** to a printer's SD card.

! Limitation

- PostScript font files cannot be uploaded to SD cards.

✎ Note

- You cannot use the functions described in 10 and 11 with Unicode Font Package for SAP®.

12. [Close]

Click to close the **[Resource File List]** dialog box.

Main Downloader V2.0 Functions

This section explains operating procedures for Downloader V2.0 functions.

Uploading Fonts to a Printer

Use the following procedure to upload a font file from the computer to a printer.

1 Double-click **[DownloaderV2.0.exe]**.

Downloader V2.0 starts and the **[Downloader V2.0]** dialog box appears.

2 Click **[Select Printer...]**.

The **[Select Printer]** dialog box appears.

3 Enter the IP address or host name of the printer you want to upload a font file to, and then click **[OK]**.

The **[Downloader V2.0]** dialog box reappears.

4 Click **[Uploaded Resource...]**.

The **[Resource File List]** dialog box appears.

5 Click **[Add to List...]**.

The **[Add to]** dialog box appears.

6 Select the file you want to upload, and then click **[Add]**.

The **[Resource File List]** dialog box reappears, and the selected file appears in **[Resource File List]**.

 **Note**

- You can select the format of the file you want to upload in the **[Files of Type:]** list.
- To delete files from **[Resource File List]**, in **[Resource File List]**, select the files you want to delete, and then click **[Remove from List..]**.

7 In the **[Upload to]** area, click **[HDD]**. In the dialog box that appears, click **[OK]**.

The file added to **[Resource File List]** starts uploading.

 **Note**

- Upload the file again if the connection is interrupted or an error occurs while uploading.

8 Click **[Close]**.

The **[Downloader V2.0]** dialog box reappears.

Exporting Fonts

Use the following procedure to export a font file.

Note

- Exported font files can be sent to other printers via FTP.
- If you create a batch file for sending an exported font file via FTP, the font can be uploaded to multiple same-model printers at the same time.

Reference

For details about the FTP commands, see p.17 “FTP Transmission”.

1 Double-click **[DownloaderV2.0.exe]**.

Downloader V2.0 starts and the **[Downloader V2.0]** dialog box appears.

2 Click **[Select Printer...]**.

The **[Select Printer]** dialog box appears.

3 Enter the IP address or host name of the printer you want to export a font file from, and then click **[OK]**.

The **[Downloader V2.0]** dialog box reappears.

4 Click **[Upload Resources to Printer...]**.

The **[Resource File List]** dialog box appears.

5 Click **[Add to List...]**.

The **[Add to]** dialog box appears.

6 Select the file you want to export, and then click **[Add]**.

The **[Resource File List]** dialog box reappears, and the selected file appears in **[Resource File List]**.

Note

- You can select the format of the file you want to export in the **[Files of Type:]** list.
- To delete files from **[Resource File List]**, in **[Resource File List]**, select the files you want to delete, and then click **[Remove from List..]**.

7 In the **[Export to File]** area, click **[HDD]**. In the dialog box that appears, click **[OK]**.

The file added to **[Resource File List]** starts exporting.

Note

- Export the file again if the connection is interrupted or an error occurs while exporting.

8 Click **[Close]**.

The **[Downloader V2.0]** dialog box reappears.

Deleting Fonts

Use the following procedure to delete a font file from a printer.

1 Double-click **[DownloaderV2.0.exe]**.

Downloader V2.0 starts and the **[Downloader V2.0]** dialog box appears.

2 Click **[Select Printer...]**.

The **[Select Printer]** dialog box appears.

3 Enter the IP address or host name of the printer whose font file you want to delete, and then click **[OK]**.

The **[Downloader V2.0]** dialog box reappears.

4 From the directory tree displayed in **[Directory Monitor]**, select the folder that includes the file you want to delete.

Files in the selected folder appear in **[File List Monitor]**.

5 Select the file you want to delete.

6 Click **[Delete]**. In the dialog box that appears, click **[OK]**.

The selected file is deleted and the **[Downloader V2.0]** dialog box reappears.

Other Downloader V2.0 Functions

Outputting Font Lists

Use the following procedure to print a list of PCL fonts uploaded to a printer.

1 Double-click [**DownloaderV2.0.exe**].

Downloader V2.0 starts and the [**Downloader V2.0**] dialog box appears.

2 Click [**Select Printer...**].

The [**Select Printer**] dialog box appears.

3 Enter the IP address or host name of the printer whose PCL font list you want to print, and then click [**OK**].

The [**Downloader V2.0**] dialog box reappears.

4 In the [**Print Font List**] area, click [**PCL**].

The selected printer's PCL font list starts printing out.

FTP Transmission

If you create a batch file for sending an exported font file via FTP, the font can be uploaded to multiple same-model printers at the same time.

The following procedure describes sample FTP commands:

- 1** Open the command prompt, and then log on to the printer using an FTP command.
- 2** Change the remote directory to the directory where the file will be transferred to.
- 3** Using the "lcd" command, change the local directory to the directory where the file will be transferred from.
- 4** Enter binary mode.
- 5** Export the file using the "put" command. File transfer can takes several minutes.

Error Messages

Message	Solutions
Cannot connect to the network.	Check the network environment.
Cannot print.	
Cannot refresh.	
Cannot initialize.	
Cannot delete.	
Windows sockets initialization failed.	
Cannot download.	Check the file size. Large files might not upload correctly. In this case, change the timeout interval to use when the printer is expecting data from the network. For details, see Network Guide supplied with the printer.
File format is not supported.	Select a file whose format is supported. Files whose formats are not supported might cause Downloader V2.0 to fail.
Cannot add files to the list, because maximum no. of files to be shown in the list has been reached.	Specify an ID in the range of 0 to 32767 .
No input for an ID number.	
File path is too long.	Folder paths must not exceed 64 bytes. Save the file in a folder whose path does not exceed 64 bytes.
The number already exists.	Specify an ID in the range of 0 to 32767 . In [Resource File List] , you cannot specify a number that already exists.
IP Address entered is invalid.	Enter a correct IP address.
No input for a host name.	Enter the printer's host name.
It includes an invalid character(s).	Spaces and characters other than "-", "_", and "." cannot be used. "-" or "_" entered after a host name is also invalid.
Host name is too long.	Enter a host name using up to 63 characters.
The file is not found.	Check the file storage location.
Not all the files have been uploaded properly.	Check the network environment and upload the files again.

INDEX

C

- CD-ROM components, 2
- Checking fonts
 - using a PCL sample file*, 5
 - using a SAP Script Sample*, 4
 - using Downloader V2.0*, 4

D

- Dialog boxes, 8

E

- Error messages, 18

F

- Font
 - deleting*, 14
 - exporting*, 13
 - outputting font lists*, 15
 - uploading*, 12
- FTP transmission, 17

S

- System requirements, 7

U

- Unicode Font Package for SAP, 1
- Uploading fonts, 3
- Using Downloader V2.0, 7

