

Envelope Feeder EF3000 (D54701)

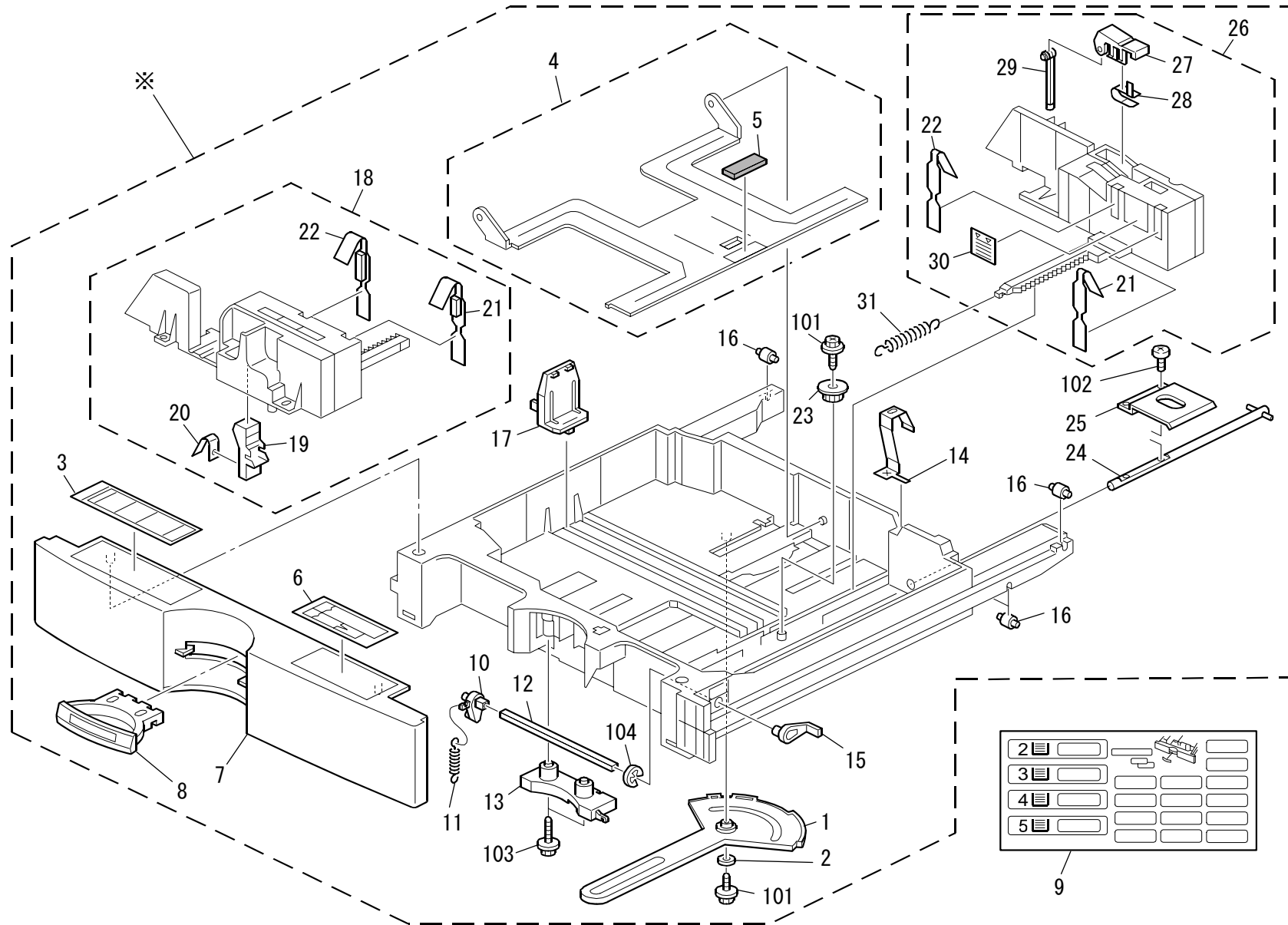
Envelope Feeder EF3000 (D54701)

PARTS CATALOG

This catalog gives the numbers and names of parts on this machine.

1.Envelope Feeder (D547) 2
Parts Index..... 5

1.Envelope Feeder (D547)



1.Envelope Feeder (D547)

Index No.	Part No.	Description	Q'ty Per Assembly
*	D547 2951	OPTION TRAY:EXP:ASS'Y	1
1	B223 2910	Link - Paper Size Sensor	1
2	B223 2911	Spacer	1
3	B238 2523	Decal - Paper Set Direction No.2	1
4	D547 2970	Tray Bottom Plate:Ass'y	1
5	AF03 3010	Pad	1
6	B180 2782	Seal:Tray	1
7	B223 2946	Cover - Paper Tray No.2	1
8	B223 2860	Paper Tray Grip	1
9	D547 2981	Decal:Size Indication	1
10	B223 2862	Lever - Release Inner	1
11	AA06 1014	Tension Spring:Grip	1
12	D029 2863	Shaft:Release:Paper Tray	1
13	B223 2861	Grip Holder	1
14	B223 2919	Ground Plate - Paper Tray No.2	1
15	B223 2868	Lever:Release:Paper Tray:Outer	1
16	A232 2987	Roller - Paper Tray	1
17	B223 2912	End Fence	1
18	B223 2957	Side Fence:Front	1
19	B223 2923	Stopper Lever - Front	1
20	B004 2923	Spring Plate - Release Lever	1
21	B223 2935	Plate - Side Fence Right	1
22	B223 2934	Plate - Side Fence	1
23	B223 2936	Gear - 16Z	1
24	B223 2865	Rise No.1 Shaft	1
25	B223 2918	Rise Lever	1
26	B223 2958	Side Fence:Rear	1
26	B223 2932	Side Fence:Rear:Universal:No.2	1
27	A267 2860	Rear Lever Stopper	1
28	A267 2857	Spring Plate - Side Fence	1
29	A267 2859	Side Fence Stopper	1
30	B223 2873	Decal - Side Fence Rear	1
31	AA06 1003	Tension Spring:Side Fence:Rear	1

Index No.	Part No.	Description	Q'ty Per Assembly
101	0450 4008N	Tapping Screw - M4x8	
102	0453 3008N	Binding Self Tapping Screw:3x8	
103	0802 5322	Hexagon Head Tapping Screw:Es:3x12	
104	0720 0080E	Retaining Ring - M8	

Parts Index

Parts Index

Part No.	Description	Page and Index No.
A232 2987	Roller - Paper Tray	3 - 16
A267 2857	Spring Plate - Side Fence	3 - 28
A267 2859	Side Fence Stopper	3 - 29
A267 2860	Rear Lever Stopper	3 - 27
B004 2923	Spring Plate - Release Lever	3 - 20
B180 2782	Seal:Tray	3 - 6
B223 2860	Paper Tray Grip	3 - 8
B223 2861	Grip Holder	3 - 13
B223 2862	Lever - Release Inner	3 - 10
B223 2865	Rise No.1 Shaft	3 - 24
B223 2868	Lever:Release:Paper Tray:Outer	3 - 15
B223 2873	Decal - Side Fence Rear	3 - 30
B223 2910	Link - Paper Size Sensor	3 - 1
B223 2911	Spacer	3 - 2
B223 2912	End Fence	3 - 17
B223 2918	Rise Lever	3 - 25
B223 2919	Ground Plate - Paper Tray No.2	3 - 14
B223 2923	Stopper Lever - Front	3 - 19
B223 2932	Side Fence:Rear:Universal:No.2	3 - 26
B223 2934	Plate - Side Fence	3 - 22
B223 2935	Plate - Side Fence Right	3 - 21
B223 2936	Gear - 16Z	3 - 23
B223 2946	Cover - Paper Tray No.2	3 - 7
B223 2957	Side Fence:Front	3 - 18
B223 2958	Side Fence:Rear	3 - 26
B238 2523	Decal - Paper Set Direction No.2	3 - 3
D029 2863	Shaft:Release:Paper Tray	3 - 12
D547 2951	OPTION TRAY:EXP:ASS'Y	3 - *
D547 2970	Tray Bottom Plate:Ass'y	3 - 4
D547 2981	Decal:Size Indication	3 - 9

Part No.	Description	Page and Index No.
AA06 1003	Tension Spring:Side Fence:Rear	3 - 31
AA06 1014	Tension Spring:Grip	3 - 11
AF03 3010	Pad	3 - 5

Part No.	Description	Page and Index No.
0450 4008N	Tapping Screw - M4x8	3 - 101
0453 3008N	Binding Self Tapping Screw:3x8	3 - 102
0720 0080E	Retaining Ring - M8	3 - 104
0802 5322	Hexagon Head Tapping Screw:Es:3x12	3 - 103

Part No.	Description	Page and Index No.