

**Paper Feed Unit PB3080
Machine Code: D387

Field Service Manual**

July, 2008
Subject to change

Safety and Symbols

Replacement Procedure Safety

CAUTION

- Turn off the main power switch and unplug the machine before beginning any of the replacement procedures in this manual.

Symbols Used in this Manual

This manual uses the following symbols.

: See or Refer to

: Screws

: Connector

: Clip ring


: E-ring

TABLE OF CONTENTS

Safety and Symbols..... 1

- Replacement Procedure Safety..... 1
- Symbols Used in this Manual..... 1

1. Replacement and Adjustment

Rear Cover..... 3

Motors, Clutch and Main Board..... 4

- Lift Motor..... 4
- Paper Feed Clutch..... 4
- Paper Feed Motor..... 5
- Main Board..... 5

Paper Feed Unit..... 6

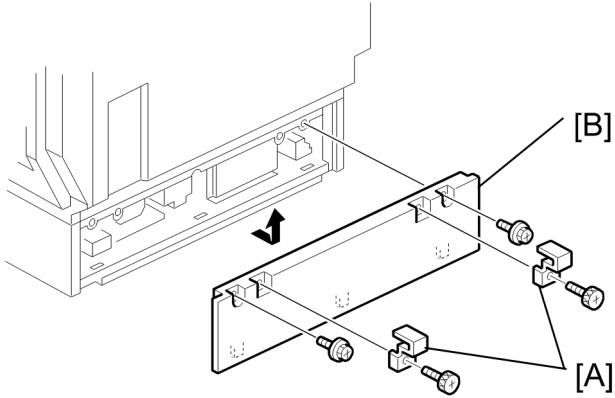
Rollers and Sensors..... 7

- Pick-up, Paper Feed and Separation Rollers..... 7
- Lift, Paper End, and Relay Sensors..... 8

1. Replacement and Adjustment

Rear Cover

1



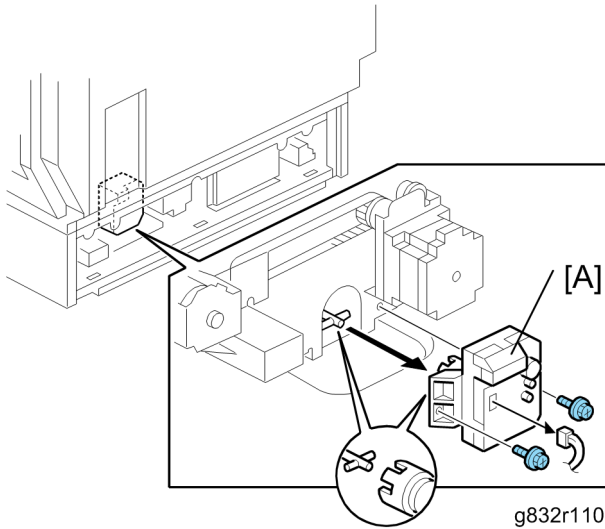
g832r105

1. Securing brackets [A] (1 x 1 each)
2. Rear cover [B] (1 x 2)

Motors, Clutch and Main Board

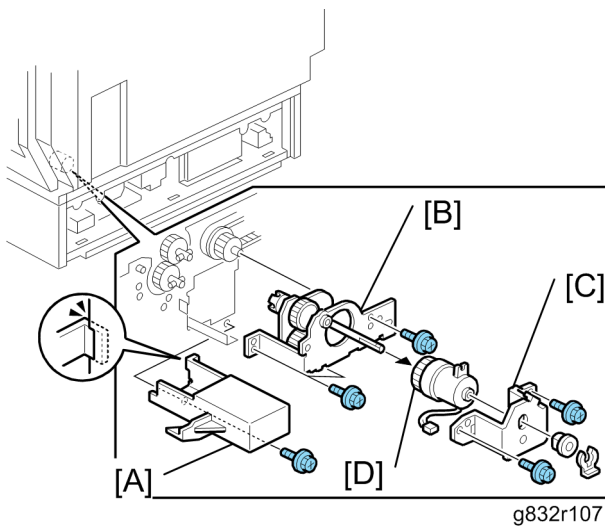
1

Lift Motor



1. Rear cover (☛ p.3 "Rear Cover")
2. Lift motor [A] (🔩 x 2, 🌀 x 1)

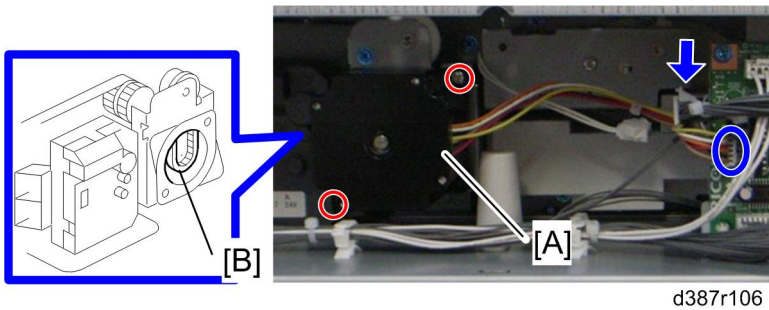
Paper Feed Clutch



1. Rear cover (☛ p.3 "Rear Cover")

2. Remove the tray end cover [A].
3. Paper feed gear unit [B] (⚙️ x 3, 🌀 x 1)
4. Paper feed clutch bracket [C] (🌀 x 1, ⚙️ x 2, bushing x 1)
5. Paper feed clutch [D]

Paper Feed Motor

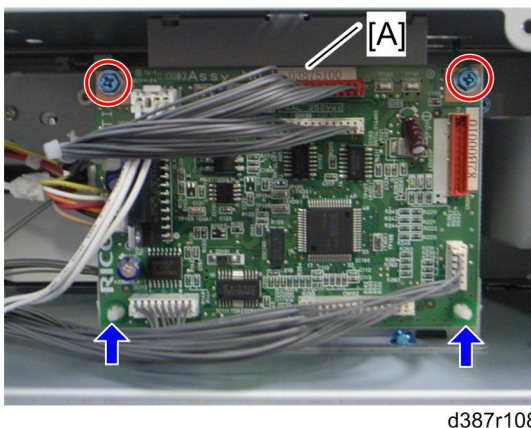


1. Rear cover (🔗 p.3 "Rear Cover")
2. Paper feed motor [A] (🌀 x 1, ⚙️ x 2, 🌀 x 1)

↓ Note

- When installing the paper feed motor, make sure that the gear of the paper feed motor holds the timing belt [B].

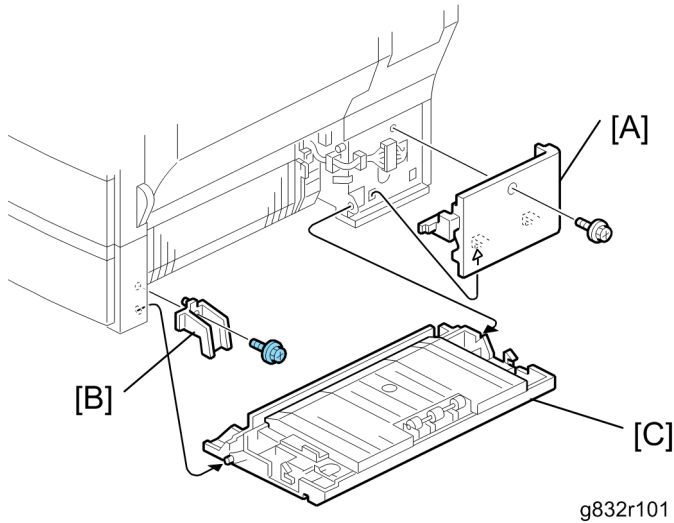
Main Board



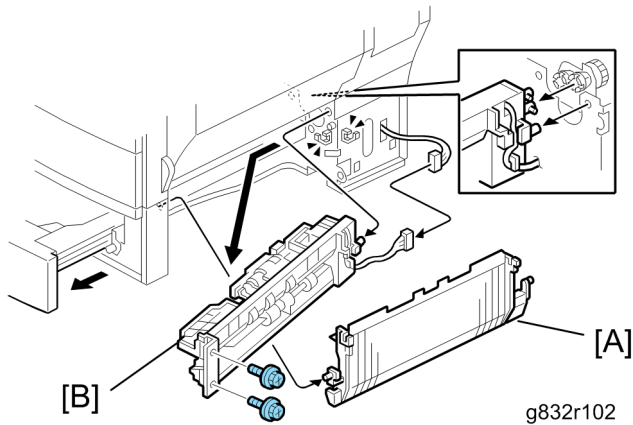
1. Rear cover (🔗 p.3 "Rear Cover")
2. Main board [A] (All 🌀s, ⚙️ x 2, snap pin x 2)

Paper Feed Unit

1



1. Right cover [A] (🔩 x 2)
2. Stopper [B] (🔩 x 1)
3. Vertical transport guide [C] of the paper feed unit

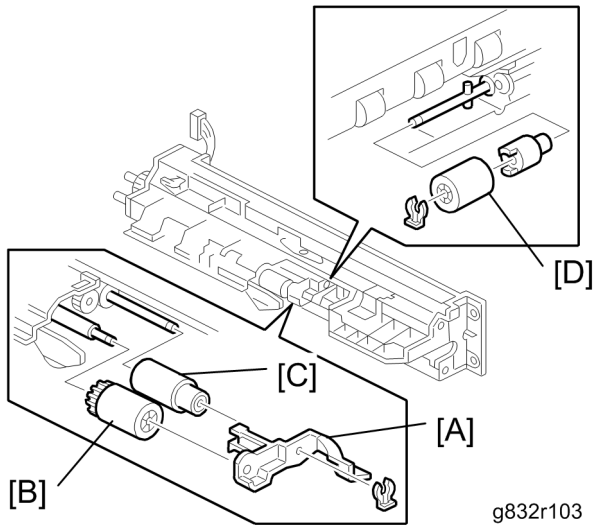


4. Pull tray 3.
5. Paper guide [A]
6. Paper feed unit [B] (🔩 x 2, 📄 x 1, 📄 x 2)

Rollers and Sensors

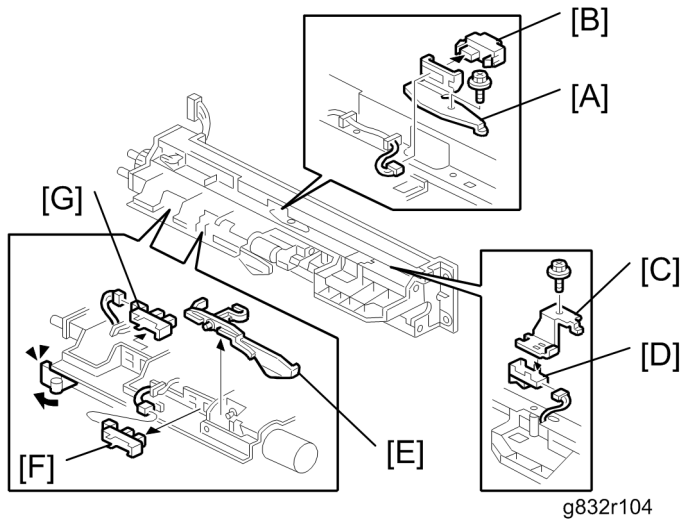
Pick-up, Paper Feed and Separation Rollers

1



1. Paper feed unit (● p.6 "Paper Feed Unit")
2. Roller holder [A] (🔗 x 1)
3. Pick-up roller [B]
4. Paper feed roller [C]
5. Separation roller [D] (🔗 x 1)

Lift, Paper End, and Relay Sensors



1. Paper feed unit (☛ p.6 "Paper Feed Unit")
2. Vertical transport sensor bracket [A] (🔩 x 1)
3. Vertical transport sensor [B] (🔩 x 1)
4. Paper feed sensor bracket [C] (🔩 x 1)
5. Paper feed sensor [D] (🔩 x 1)
6. Paper end sensor filler [E]
7. Paper end sensor [F] (🔩 x 1)
8. Lift sensor [G] (🔩 x 1)