

**Paper Feed Unit PB3080**  
**(D387-17)**  
**Parts Catalog**

**Parts change information sample**

 **Add**

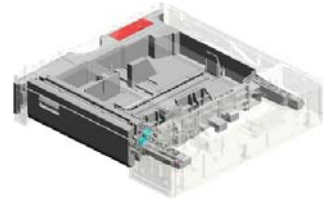
 **Update**

 **Delete**

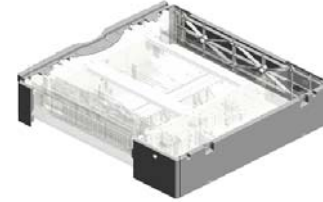
# Unit All



U001  
MAIN FRAME



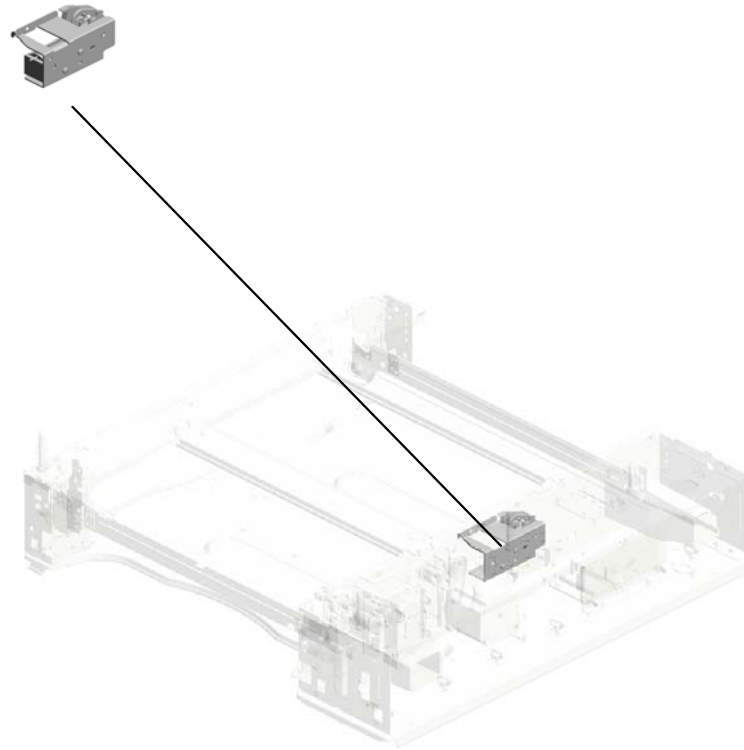
U002  
PAPER FEED



U003  
EXTERIOR

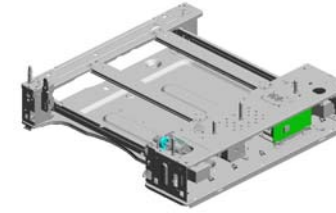
# U001.MAIN FRAME

U001\_S001  
G8322730  
STOPPER:PAPER TRAY UNI  
T

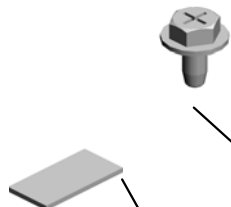


# U001 MAIN FRAME

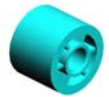
- 3.04543006Q (x76) TAPPING SCREW - M3X6
- 16.AA082101 (x3) BUSHING - 6X10X6
- 20.AB011259 GEAR - 32Z
- 17.AA082102 BUSHING - 6X10X6
- 5.07200060E (x2) RETAINING RING - M6



19.AA161163  
CUSHION



21.AB011500  
(x2)  
GEAR - 27Z



9.11050511  
(x2)  
HARNESS CLAMP - LWS-0306ZC



2.04513014N  
TAPPING SCREW:  
3X14



12.12042529  
SWITCH - V-5F912  
DN



11.11050522  
EDGE SADDLE - L  
ES0510



10.11050516  
(x6)  
CLAMP



18.AA100014  
RETAINING RING  
C - SEPARATE



14.AA043713  
[A]  
TIMING BELT:40S3  
M285  
201601-01 O/O



6.08050088  
RETAINING RING -  
M6



4.07200040E  
(x4)  
RETAINING RING -  
M4



8.11050487  
(x6)  
HARNESS CLAMP



1.03140080N  
(x4)  
PHILIPS PAN HEA  
D SCREW - M4X8



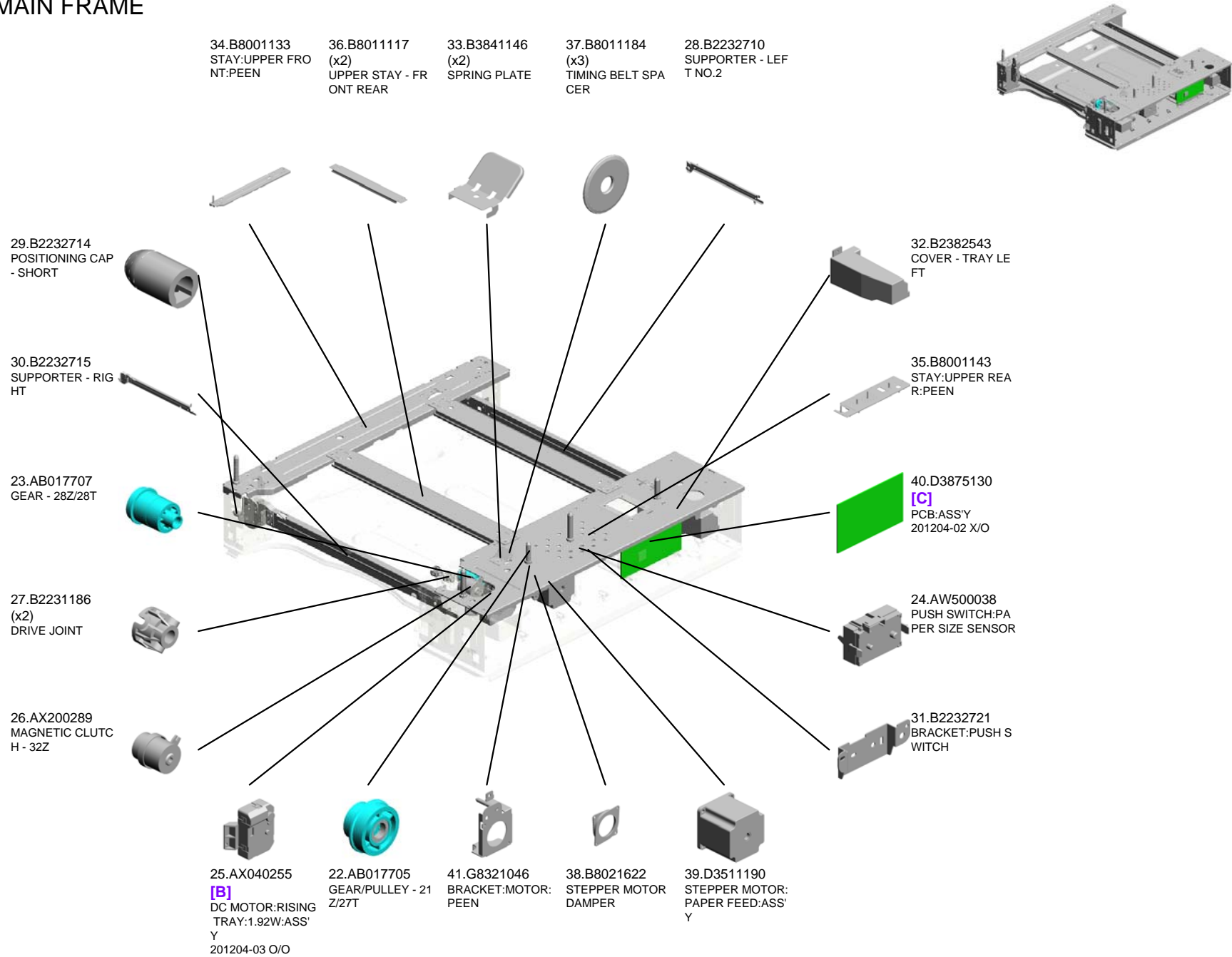
13.AA043318  
TIMING BELT - 40S  
3M144



7.11050192  
(x2)  
LOCKING SUPPOR  
T

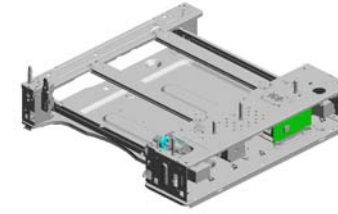


# U001 MAIN FRAME



# U001 MAIN FRAME

50.G8321178 GRIP SHAFT  
 48.G8321161 DRUM STAY  
 49.G8321175 FEED SHAFT  
 58.G8323619 MAGNETIC CLUTCH BRACKET  
 59.GB017051 GEAR:Z30/T27



45.G8321121 COMPRESSION SPRING: EARTH



43.G8321058 (x4) STAND: BASE



47.G8321158 DRIVE UNIT BRACKET



53.G8321183 MICRO SWITCH BRACKET



57.G8322953 COVER: BASE: DRIVE UNIT



56.G8322951 COVER - REAR RIGHT



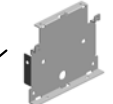
44.G8321059 COVER: BASE: GUI DE PIN



46.G8321146 CONNECTOR BRACKET



51.G8321180 BRACKET: INTERFACE BOARD



52.G8321182 BRACKET: BASE: HEATER ARNESS






55.G8322950 COVER: ELECTRIC AL COMPONENTS



42.G8321056 BRACKET: DRAWER: BASE

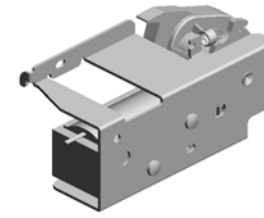
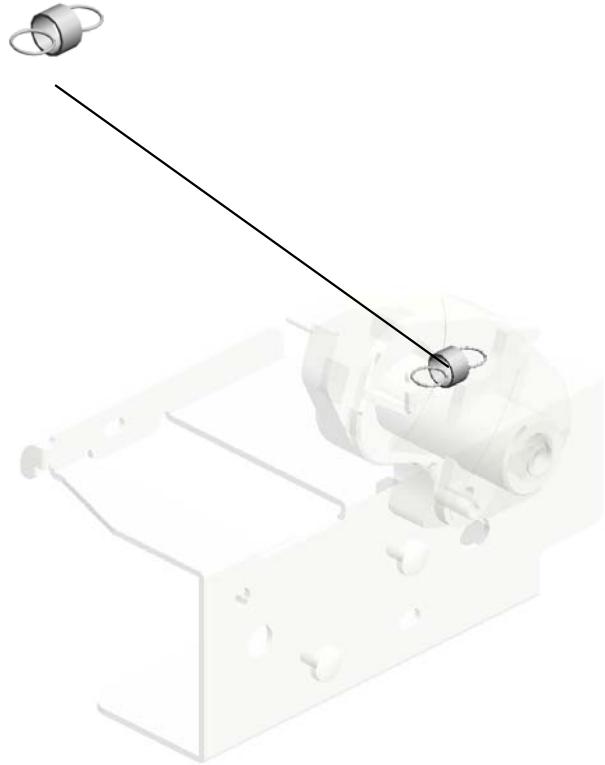


 AA043591 <b>[A]</b> TIMING BELT - 40S 3M285 201601-01 O/O	 AX040191 <b>[B]</b> DC MOTOR 24V 201204-03 O/O
-----------------------------------------------------------------------------------------------------------------------------------------------------------	---------------------------------------------------------------------------------------------------------------------------------------------

 D3875100 <b>[C]</b> PCB:TAHITI-B:ASS'Y 201204-02 X/O
------------------------------------------------------------------------------------------------------------------------------------------------------

U001\_S001  
STOPPER:PAPER TRAY UNIT

15.AA062257  
SPRING:UN LOCK



54.G8322730  
STOPPER:PAPER  
TRAY UNIT

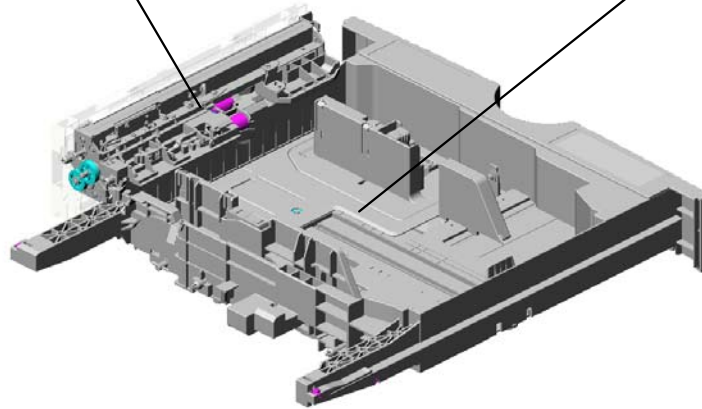


# U002.PAPER FEED

U002\_S002  
D0292752  
PAPER FEED UNIT



U002\_S001  
D0292900  
PAPER TRAY:NO.2:ASSY

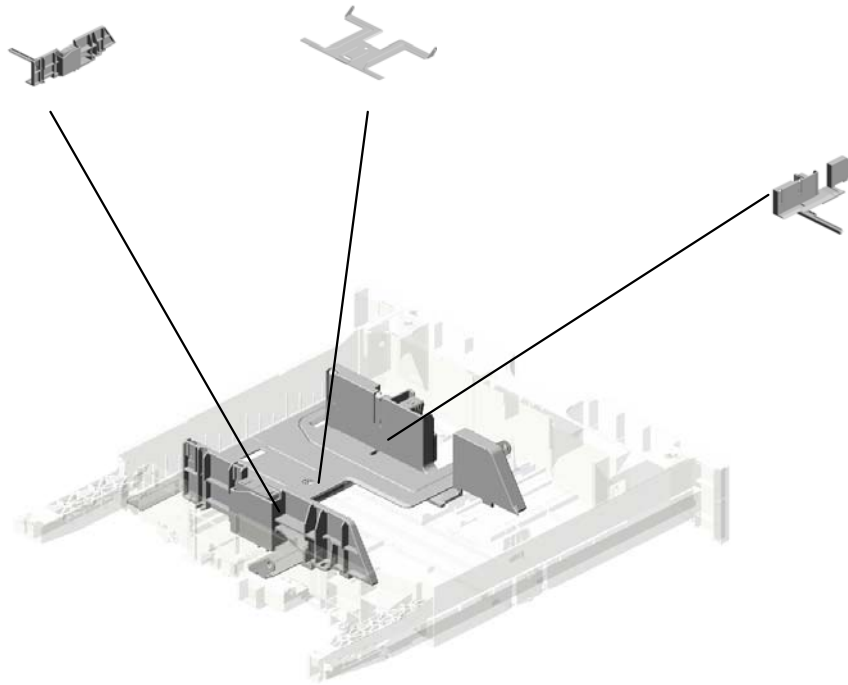


# U002\_S001.PAPER TRAY:NO.2:ASS'Y

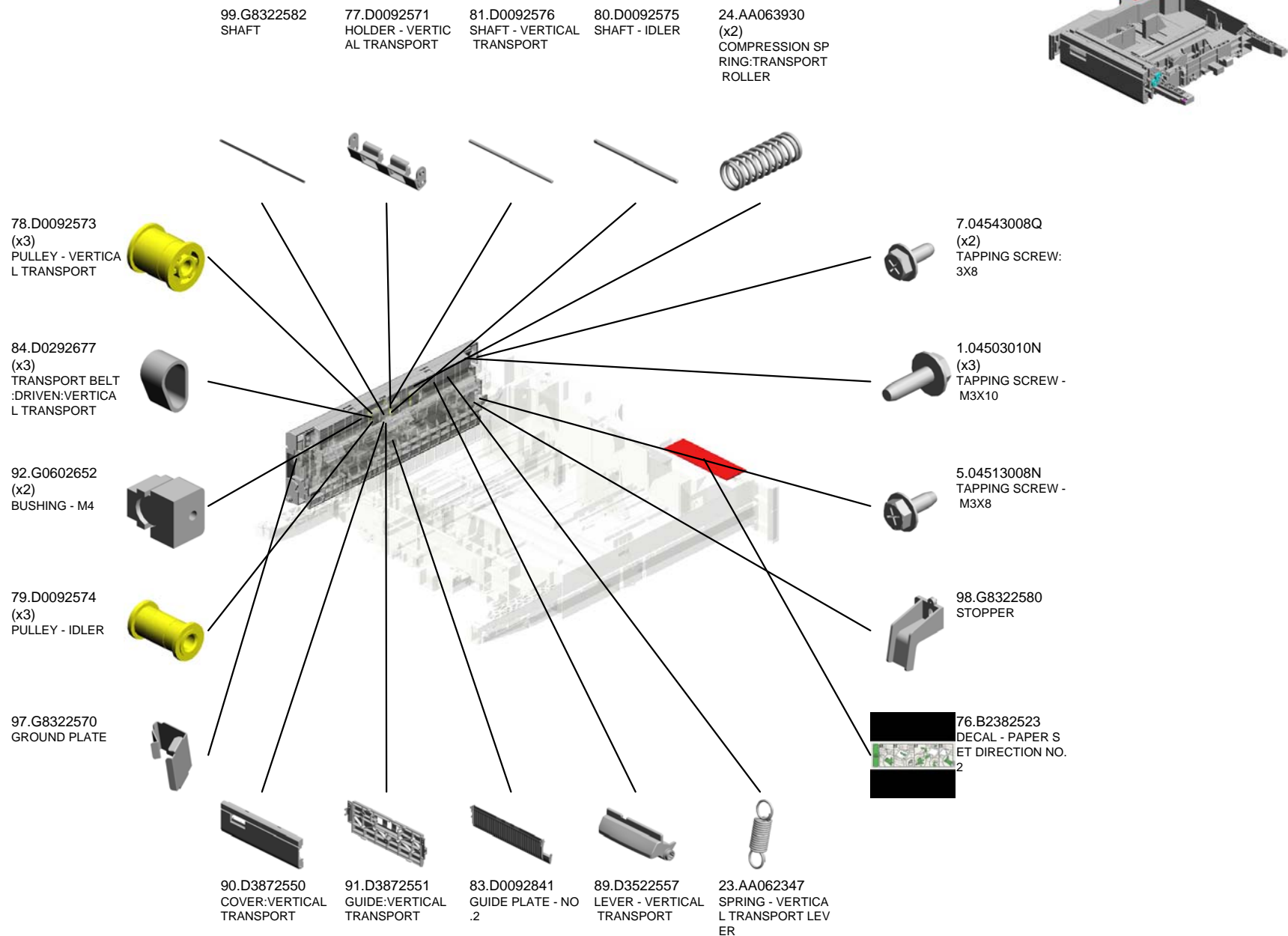
U002\_S001\_S002  
B2232930  
REAR SIDE FENCE

U002\_S001\_S003  
B2232940  
TRAY BOTTOM PLATE

U002\_S001\_S001  
B2232920  
FRONT SIDE FENCE

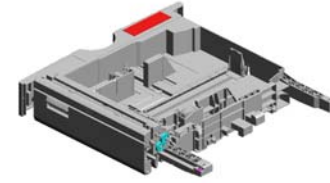


# U002 PAPER FEED

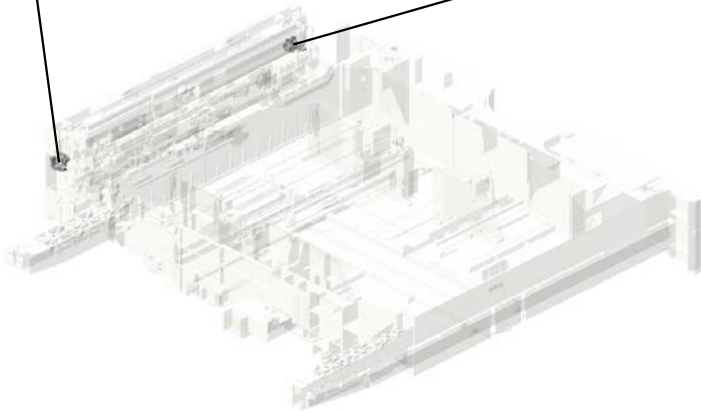
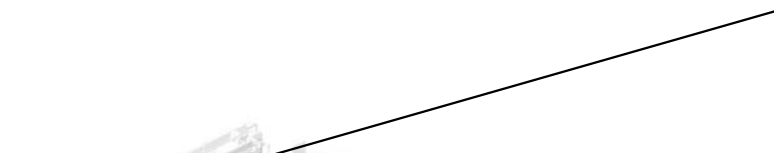


U002  
PAPER FEED

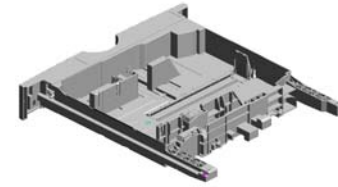
101.G8322584  
REAR HOOK



100.G8322583  
FRONT HOOK



U002\_S001  
PAPER TRAY:NO.2:ASS'Y



87.D0292900  
PAPER TRAY:NO.2  
:ASS'Y

73.B2232936  
GEAR - 16Z

3.04504008N  
(x2)  
TAPPING SCREW -  
M4X8

60.B2232868  
LEVER:RELEASE:P  
APER TRAY:OUTE  
R

10.07200080E  
RETAINING RING -  
M8

86.D0292863  
SHAFT:RELEASE:P  
APER TRAY

65.B2232918  
RISE LEVER

6.04533008N  
BINDING SELF TAP  
PING SCREW:3X8

59.B2232865  
RISE NO.1 SHAFT

66.B2232919  
GROUND PLATE -  
PAPER TRAY NO.2

14.A2322987  
(x4)  
ROLLER - PAPER T  
RAY

63.B2232911  
SPACER

20.AA061003  
TENSION SPRING:  
SIDE FENCE:REAR

62.B2232910  
LINK - PAPER SIZE  
SENSOR

58.B2232862  
LEVER - RELEASE  
INNER

64.B2232912  
END FENCE

21.AA061014  
TENSION SPRING:  
GRIP

2.04503012N  
(x2)  
TAPPING SCREW:  
3X12

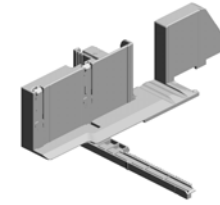
75.B2232946  
COVER - PAPER T  
RAY NO.2

56.B2232860  
PAPER TRAY GRIP

57.B2232861  
GRIP HOLDER

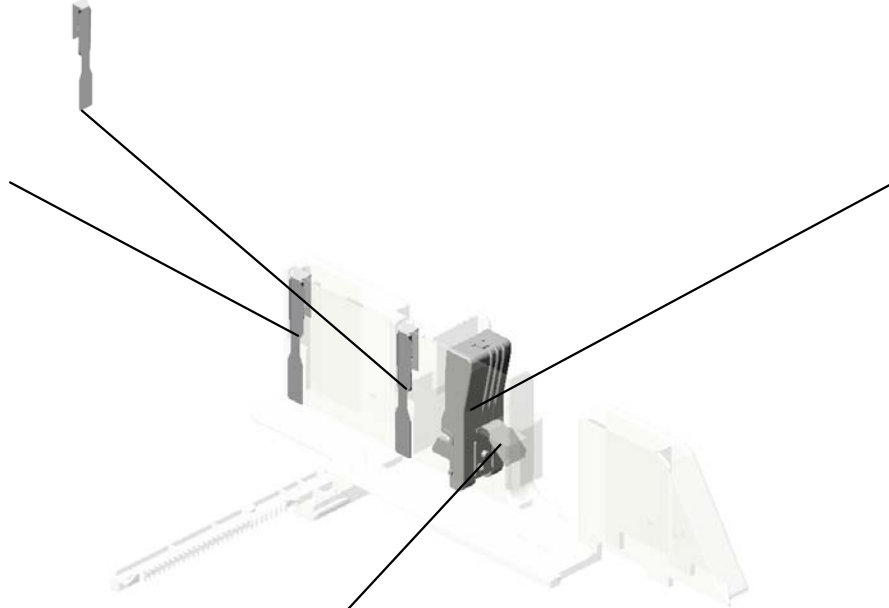
U002\_S001\_S001  
FRONT SIDE FENCE

71.B2232934  
PLATE - SIDE FENCE



67.B2232920  
FRONT SIDE FENCE

72.B2232935  
PLATE - SIDE FENCE RIGHT



68.B2232923  
STOPPER LEVER - FRONT



41.B0042923  
SPRING PLATE - R  
RELEASE LEVER

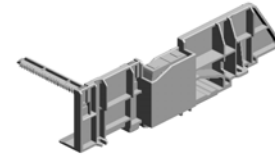
# U002\_S001\_S002 REAR SIDE FENCE

61.B2232873  
DECAL - SIDE FENCE REAR

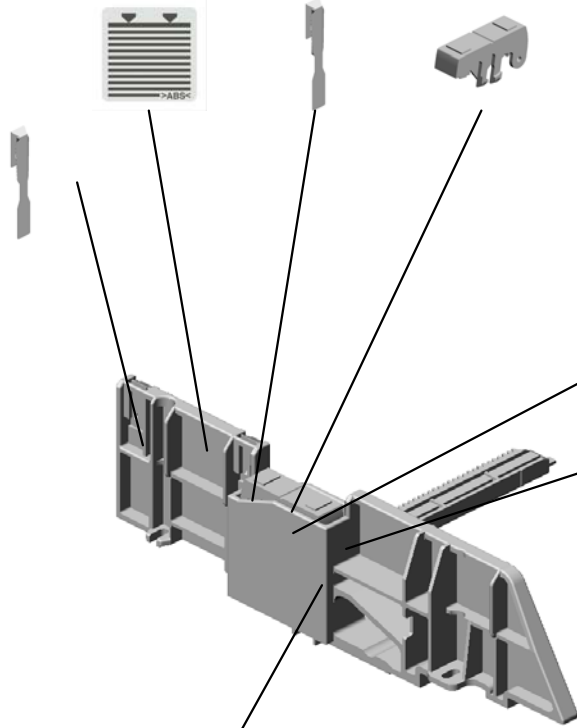
71.B2232934  
PLATE - SIDE FENCE

17.A2672860  
REAR LEVER STOPPER

69.B2232930  
REAR SIDE FENCE



72.B2232935  
PLATE - SIDE FENCE RIGHT



15.A2672857  
SPRING PLATE - SIDE FENCE



70.B2232932  
SIDE FENCE:REAR UNIVERSAL:NO.2

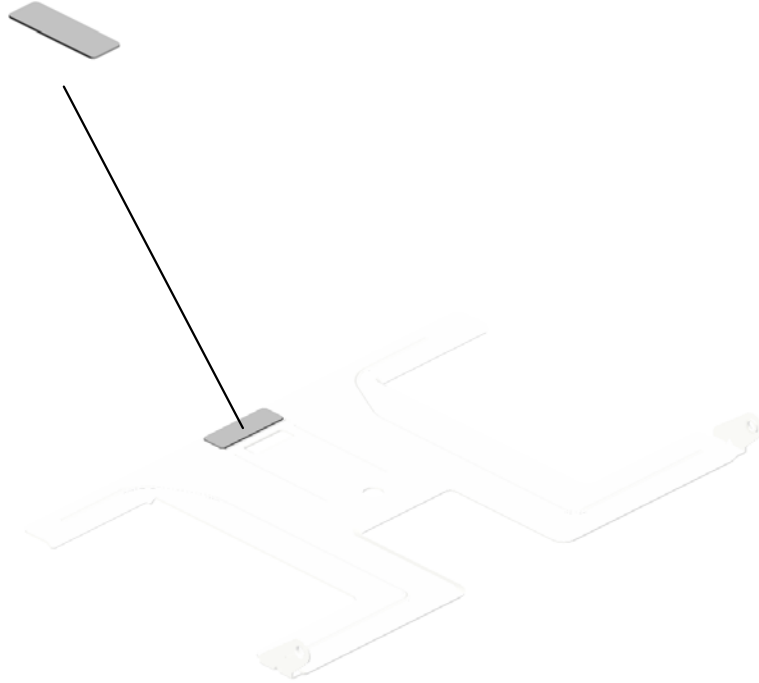


16.A2672859  
SIDE FENCE STOPPER



U002\_S001\_S003  
TRAY BOTTOM PLATE

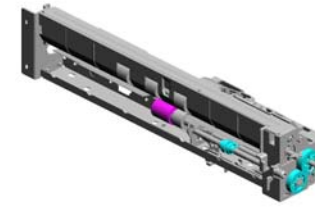
32.AF013006  
BOTTOM PLATE P  
AD



74.B2232940  
TRAY BOTTOM PL  
ATE



# U002\_S002 PAPER FEED UNIT



85.D0292752  
PAPER FEED UNIT

- 29.AB010157 GEAR:SEPARATE:DRIVEN
- 12.11050511 (x2) HARNESS CLAMP - LWS-0306ZC
- 8.04563008N TAPPING SCREW - M3X8
- 11.08050089 (x4) RETAINING RING - M4
- 36.AW010122 PAPER FEED SENSOR

28.AB010156 GEAR:SEPARATE:DRIVE

13.52062686 (x2) SNAP RING

22.AA062259 SPRING - RELEASE

18.AA060691 TENSION SPRING

4.04513006N (x11) TAPPING SCREW - 3X6

19.AA060693 TENSION SPRING

25.AA082101 BUSHING - 6X10X6

30.AB011218 GEAR - ROLLER CLUTCH

35.AF032090 PAPER FEED ROLLER:SEPARATE

31.AB011252 GEAR - 20Z

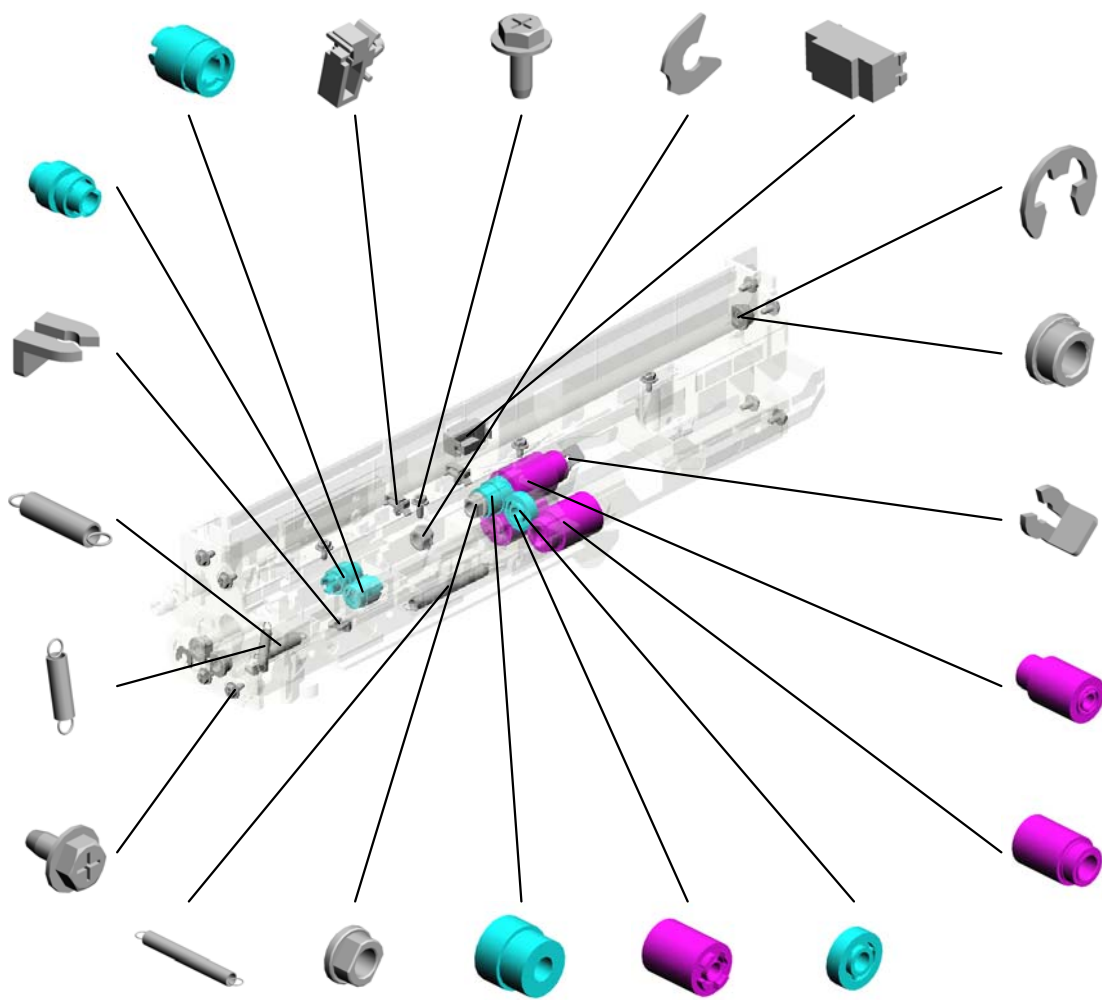
9.07200040E RETAINING RING - M4

26.AA082143 (x4) BUSHING - 6X10X6

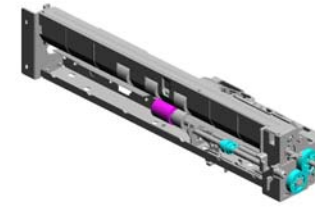
27.AA100014 (x2) RETAINING RING C - SEPARATE

34.AF031090 PAPER FEED ROLLER:FEED

33.AF030090 PAPER FEED ROLLER:PICKUP



# U002\_S002 PAPER FEED UNIT



85.D0292752  
PAPER FEED UNIT

- 43.B2232762 FEED SHAFT
- 39.B0042773 INSULATION:SEPA  
RATE
- 82.D0092757 TRANSPORT ROLL  
ER:DRIVE:ASS'Y
- 48.B2232776 STAY
- 88.D0892781 BRACKET:SENSO  
R  
201204-01 X/O

50.B2232780  
DC SOLENOID 24V

38.AW020145  
(x2)  
PHOTOINTERRUP  
TOR:FLAT

53.B2232815  
SEPARATE DRIVE  
SHAFT

44.B2232764  
GEAR-24Z

54.B2232819  
GEAR - 22Z

52.B2232810  
SEPARATE DRIVE  
N SHAFT

42.B2232761  
PICKUP ARM

40.B0042783  
TORQUE LIMITER

45.B2232765  
GROUND PLATE -  
FEED

46.B2232767  
PAPER END FEEL  
ER

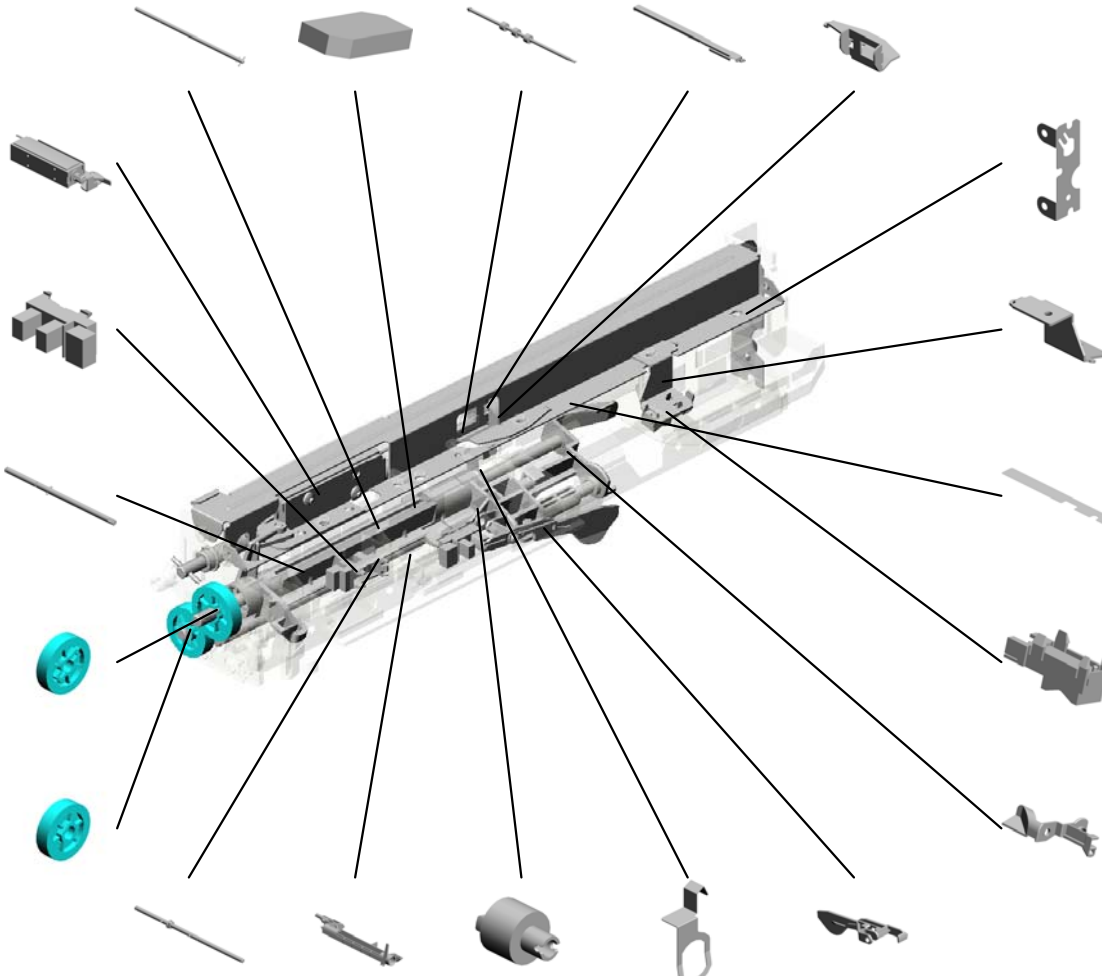
51.B2232786  
GROUND PLATE -  
FRONT

49.B2232778  
SENSOR BRACK  
ET

47.B2232772  
HARNESS SHEET

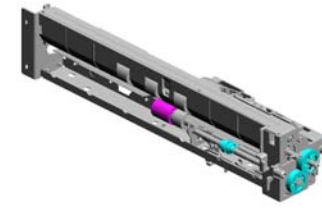
37.AW010128  
PAPER FEED SEN  
SOR

55.B2232829  
FEED GUIDE



U002\_S002  
PAPER FEED UNIT

95.G0652775  
LINK LEVER



85.D0292752  
PAPER FEED UNIT

93.G0652767  
LEVER - FEED



94.G0652774  
PRESSURE LEVER



96.G0652776  
RELEASE LEVER



# U003 EXTERIOR

1.04513008N  
(x5)  
TAPPING SCREW -  
M3X8

4.G8321270  
COVER:RIGHT FR  
ONT



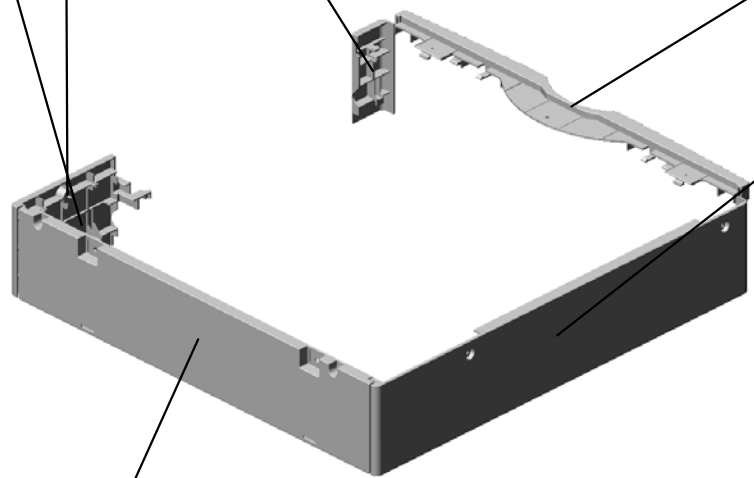
5.G8321280  
COVER:RIGHT RE  
AR



6.G8321290  
COVER - UPPER F  
RONT



3.G8321260  
COVER:LEFT



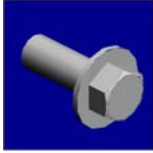
2.G8321251  
COVER:REAR



## Accessories



1.03604010N  
(x2)  
SCREW:M4X10



2.AA143575  
(x3)  
FLAT SCREW:KNOB SCREW:M4X10



3.G8327900  
SCREW:SPRING WASHER:ROUND P  
OINT:M4X10



4.G8328510  
(x2)  
COUPLING BRACKET

## Exclusive Parts

Number	Part Name	Group	ID
52062686	SNAP RING	U002_S002	13
A2322987	ROLLER - PAPER TRAY	U002_S001	14
A2672857	SPRING PLATE - SIDE FENCE	U002_S001_S002	15
A2672859	SIDE FENCE STOPPER	U002_S001_S002	16
A2672860	REAR LEVER STOPPER	U002_S001_S002	17
AA043318	TIMING BELT - 40S3M144	U001	13
<b>AA043713</b>	<b>TIMING BELT:40S3M285</b>	<b>U001</b>	<b>14</b>
AA060691	TENSION SPRING	U002_S002	18
AA060693	TENSION SPRING	U002_S002	19
AA061003	TENSION SPRING:SIDE FENCE:REAR	U002_S001	20
AA061014	TENSION SPRING:GRIP	U002_S001	21
AA062257	SPRING:UN LOCK	U001_S001	15
AA062259	SPRING - RELEASE	U002_S002	22
AA062347	SPRING - VERTICAL TRANSPORT LEVER	U002	23
AA063930	COMPRESSION SPRING:TRANSPORT ROLLER	U002	24
AA082101	BUSHING - 6X10X6	U001	16
		U002_S002	25
AA082102	BUSHING - 6X10X6	U001	17
AA082143	BUSHING - 6X10X6	U002_S002	26
AA100014	RETAINING RING C - SEPARATE	U001	18
		U002_S002	27
AA143575	FLAT SCREW:KNOB SCREW:M4X10	Accessories	2
AA161163	CUSHION	U001	19
AB010156	GEAR:SEPARATE:DRIVE	U002_S002	28
AB010157	GEAR:SEPARATE:DRIVEN	U002_S002	29
AB011218	GEAR - ROLLER CLUTCH	U002_S002	30
AB011252	GEAR - 20Z	U002_S002	31
AB011259	GEAR - 32Z	U001	20
AB011500	GEAR - 27Z	U001	21
AB017705	GEAR/PULLEY - 21Z/27T	U001	22
AB017707	GEAR - 28Z/28T	U001	23
AF013006	BOTTOM PLATE PAD	U002_S001_S003	32
AF030090	PAPER FEED ROLLER:PICKUP	U002_S002	33
AF031090	PAPER FEED ROLLER:FEED	U002_S002	34

Number	Part Name	Group	ID
AF032090	PAPER FEED ROLLER:SEPARATE	U002_S002	35
AW010122	PAPER FEED SENSOR	U002_S002	36
AW010128	PAPER FEED SENSOR	U002_S002	37
AW020145	PHOTOINTERRUPTOR:FLAT	U002_S002	38
AW500038	PUSH SWITCH:PAPER SIZE SENSOR	U001	24
AX040255	DC MOTOR:RISING TRAY:1.92W:ASS'Y	U001	25
AX200289	MAGNETIC CLUTCH - 32Z	U001	26
B0042773	INSULATION:SEPARATE	U002_S002	39
B0042783	TORQUE LIMITER	U002_S002	40
B0042923	SPRING PLATE - RELEASE LEVER	U002_S001_S001	41
B2231186	DRIVE JOINT	U001	27
B2232710	SUPPORTER - LEFT NO.2	U001	28
B2232714	POSITIONING CAP - SHORT	U001	29
B2232715	SUPPORTER - RIGHT	U001	30
B2232721	BRACKET:PUSH SWITCH	U001	31
B2232761	PICKUP ARM	U002_S002	42
B2232762	FEED SHAFT	U002_S002	43
B2232764	GEAR-24Z	U002_S002	44
B2232765	GROUND PLATE - FEED	U002_S002	45
B2232767	PAPER END FEELER	U002_S002	46
B2232772	HARNESS SHEET	U002_S002	47
B2232776	STAY	U002_S002	48
B2232778	SENSOR BRACKET	U002_S002	49
B2232780	DC SOLENOID 24V	U002_S002	50
B2232786	GROUND PLATE - FRONT	U002_S002	51
B2232810	SEPARATE DRIVEN SHAFT	U002_S002	52
B2232815	SEPARATE DRIVE SHAFT	U002_S002	53
B2232819	GEAR - 22Z	U002_S002	54
B2232829	FEED GUIDE	U002_S002	55
B2232860	PAPER TRAY GRIP	U002_S001	56
B2232861	GRIP HOLDER	U002_S001	57
B2232862	LEVER - RELEASE INNER	U002_S001	58
B2232865	RISE NO.1 SHAFT	U002_S001	59
B2232868	LEVER:RELEASE:PAPER TRAY:OUTER	U002_S001	60
B2232873	DECAL - SIDE FENCE REAR	U002_S001_S002	61

## Exclusive Parts

Number	Part Name	Group	ID
B2232910	LINK - PAPER SIZE SENSOR	U002_S001	62
B2232911	SPACER	U002_S001	63
B2232912	END FENCE	U002_S001	64
B2232918	RISE LEVER	U002_S001	65
B2232919	GROUND PLATE - PAPER TRAY N O.2	U002_S001	66
B2232920	FRONT SIDE FENCE	U002_S001_S001	67
B2232923	STOPPER LEVER - FRONT	U002_S001_S001	68
B2232930	REAR SIDE FENCE	U002_S001_S002	69
B2232932	SIDE FENCE:REAR:UNIVERSAL:N O.2	U002_S001_S002	70
B2232934	PLATE - SIDE FENCE	U002_S001_S001	71
		U002_S001_S002	71
B2232935	PLATE - SIDE FENCE RIGHT	U002_S001_S001	72
		U002_S001_S002	72
B2232936	GEAR - 16Z	U002_S001	73
B2232940	TRAY BOTTOM PLATE	U002_S001_S003	74
B2232946	COVER - PAPER TRAY NO.2	U002_S001	75
B2382523	DECAL - PAPER SET DIRECTION NO.2	U002	76
B2382543	COVER - TRAY LEFT	U001	32
B3841146	SPRING PLATE	U001	33
B8001133	STAY:UPPER FRONT:PEEN	U001	34
B8001143	STAY:UPPER REAR:PEEN	U001	35
B8011117	UPPER STAY - FRONT REAR	U001	36
B8011184	TIMING BELT SPACER	U001	37
B8021622	STEPPER MOTOR DAMPER	U001	38
D0092571	HOLDER - VERTICAL TRANSPORT	U002	77
D0092573	PULLEY - VERTICAL TRANSPORT	U002	78
D0092574	PULLEY - IDLER	U002	79
D0092575	SHAFT - IDLER	U002	80
D0092576	SHAFT - VERTICAL TRANSPORT	U002	81
D0092757	TRANSPORT ROLLER:DRIVE:ASS'Y	U002_S002	82
D0092841	GUIDE PLATE - NO.2	U002	83
D0292677	TRANSPORT BELT:DRIVEN:VERTICAL TRANSPORT	U002	84
D0292752	PAPER FEED UNIT	U002_S002	85

Number	Part Name	Group	ID
D0292863	SHAFT:RELEASE:PAPER TRAY	U002_S001	86
D0292900	PAPER TRAY:NO.2:ASS'Y	U002_S001	87
D0892781	BRACKET:SENSOR	U002_S002	88
D3511190	STEPPER MOTOR:PAPER FEED:ASS'Y	U001	39
D3522557	LEVER - VERTICAL TRANSPORT	U002	89
D3872550	COVER:VERTICAL TRANSPORT	U002	90
D3872551	GUIDE:VERTICAL TRANSPORT	U002	91
D3875130	PCB:ASS'Y	U001	40
G0602652	BUSHING - M4	U002	92
G0652767	LEVER - FEED	U002_S002	93
G0652774	PRESSURE LEVER	U002_S002	94
G0652775	LINK LEVER	U002_S002	95
G0652776	RELEASE LEVER	U002_S002	96
G8321046	BRACKET:MOTOR:PEEN	U001	41
G8321056	BRACKET:DRAWER:BASE	U001	42
G8321058	STAND:BASE	U001	43
G8321059	COVER:BASE:GUIDE PIN	U001	44
G8321121	COMPRESSION SPRING:EARTH	U001	45
G8321146	CONNECTOR BRACKET	U001	46
G8321158	DRIVE UNIT BRACKET	U001	47
G8321161	DRUM STAY	U001	48
G8321175	FEED SHAFT	U001	49
G8321178	GRIP SHAFT	U001	50
G8321180	BRACKET:INTERFACE BOARD	U001	51
G8321182	BRACKET:BASE:HARNESS:HEATER	U001	52
G8321183	MICRO SWITCH BRACKET	U001	53
G8321251	COVER:REAR	U003	2
G8321260	COVER:LEFT	U003	3
G8321270	COVER:RIGHT FRONT	U003	4
G8321280	COVER:RIGHT REAR	U003	5
G8321290	COVER - UPPER FRONT	U003	6
G8322570	GROUND PLATE	U002	97
G8322580	STOPPER	U002	98
G8322582	SHAFT	U002	99
G8322583	FRONT HOOK	U002	100
G8322584	REAR HOOK	U002	101

## Exclusive Parts

Number	Part Name	Group	ID
G8322730	STOPPER:PAPER TRAY UNIT	U001_S001	54
G8322950	COVER:ELECTRICAL COMPONENTS	U001	55
G8322951	COVER - REAR RIGHT	U001	56
G8322953	COVER:BASE:DRIVE UNIT	U001	57
G8323619	MAGNETIC CLUTCH BRACKET	U001	58
G8327900	SCREW:SPRING WASHER:ROUND POINT:M4X10	Accessories	3
G8328510	COUPLING BRACKET	Accessories	4
GB017051	GEAR:Z30/T27	U001	59



## Standard Parts



03140080N  
PHILIPS PAN HEAD SCREW -  
M4X8



03604010N  
SCREW:M4X10



04503010N  
TAPPING SCREW - M3X10



04503012N  
TAPPING SCREW:3X12



04504008N  
TAPPING SCREW - M4X8



04513006N  
TAPPING SCREW - 3X6



04513008N  
TAPPING SCREW - M3X8



04513014N  
TAPPING SCREW:3X14



04533008N  
BINDING SELF TAPPING SC  
REW:3X8



04543006Q  
TAPPING SCREW - M3X6



04543008Q  
TAPPING SCREW:3X8



04563008N  
TAPPING SCREW - M3X8



07200040E  
RETAINING RING - M4



07200060E  
RETAINING RING - M6



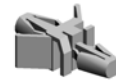
07200080E  
RETAINING RING - M8



08050088  
RETAINING RING - M6



08050089  
RETAINING RING - M4



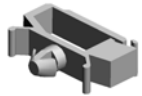
11050192  
LOCKING SUPPORT



11050487  
HARNES CLAMP



11050511  
HARNES CLAMP - LWS-030  
6ZC



11050516  
CLAMP



11050522  
EDGE SADDLE - LES0510



12042529  
SWITCH - V-5F912DN

## Design Change List

Number	Title	Set	Old Part		New Part		Index No.		Q'ty	Interchg		Reason	Cut-in S/N
			P/N	Name	P/N	Name	Group	ID		Indiv.	Set		
201601-01	1601 Modification	-	AA043591	TIMING BELT - 40S3M285	AA043713	TIMING BELT:40S3M285	U001	14	1	O/O			D38717:
201204-01	1204 Modification	-	B0822781	BRACKET:SENS OR	D0892781	BRACKET:SENS OR	U002_S002	88	1	X/O			D38717:
201204-02	1204 Modification	-	D3875100	PCB:TAHITI-B:ASS'Y	D3875130	PCB:ASS'Y	U001	40	1	X/O			D38717:
201204-03	1204 Modification	-	AX040191	DC MOTOR 24V	AX040255	DC MOTOR:RISING TRAY:1.92W:ASS'Y	U001	25	1	O/O			D38717:

