

**Paper Feed Unit PB3130
(D580)
Parts Catalog**

Parts change information sample

 **Add**

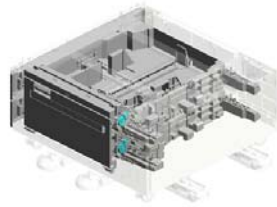
 **Update**

 **Delete**

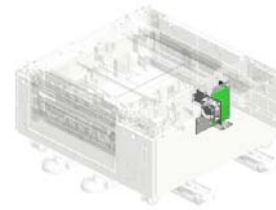
Unit All



U001
EXTERIOR



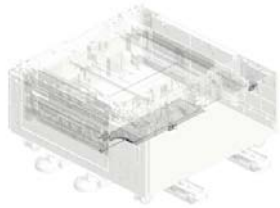
U002
PAPER FEED



U003
ELECTRICAL

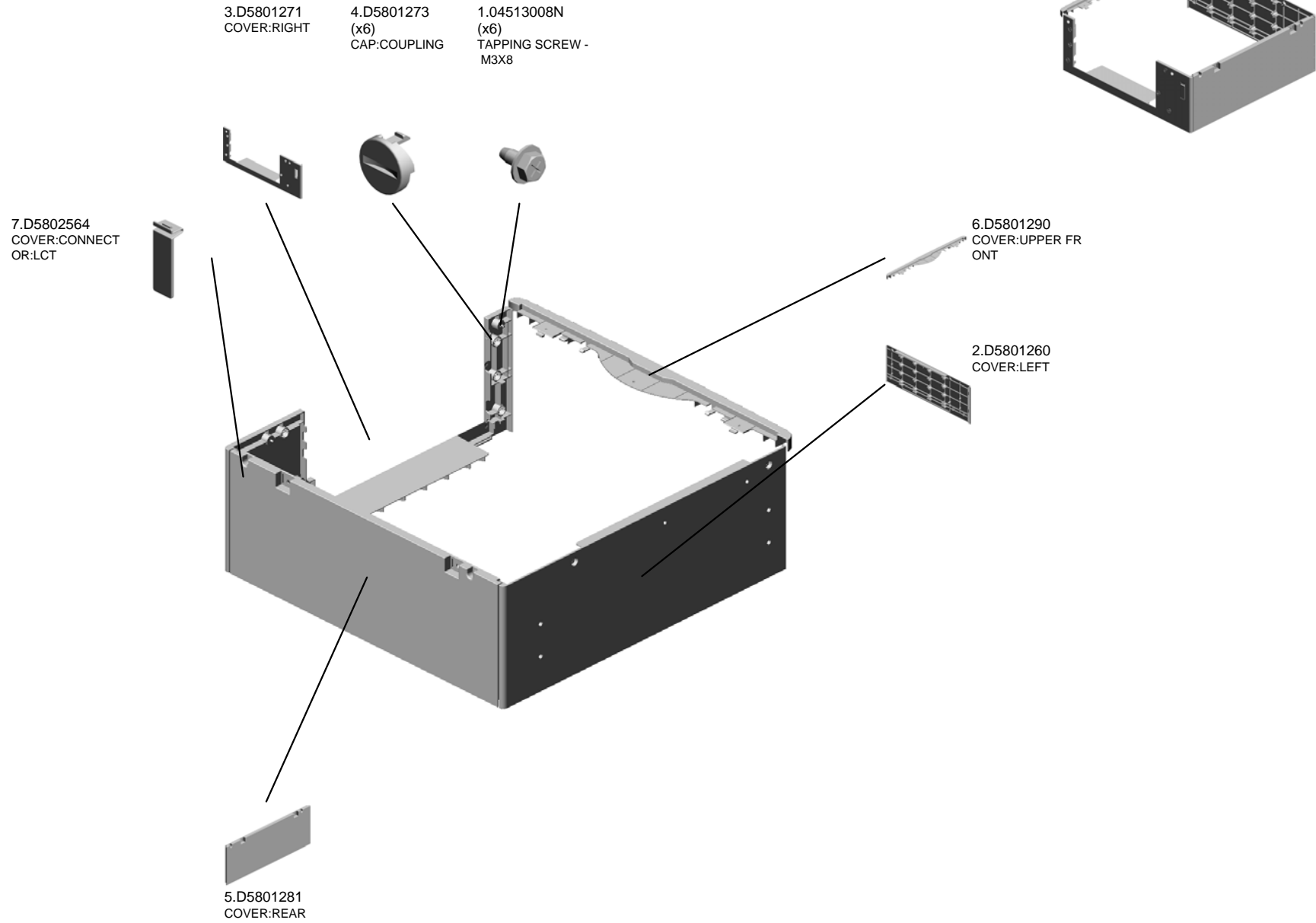


U004
MAIN FRAME



U005
ACCESSORIES

U001 EXTERIOR

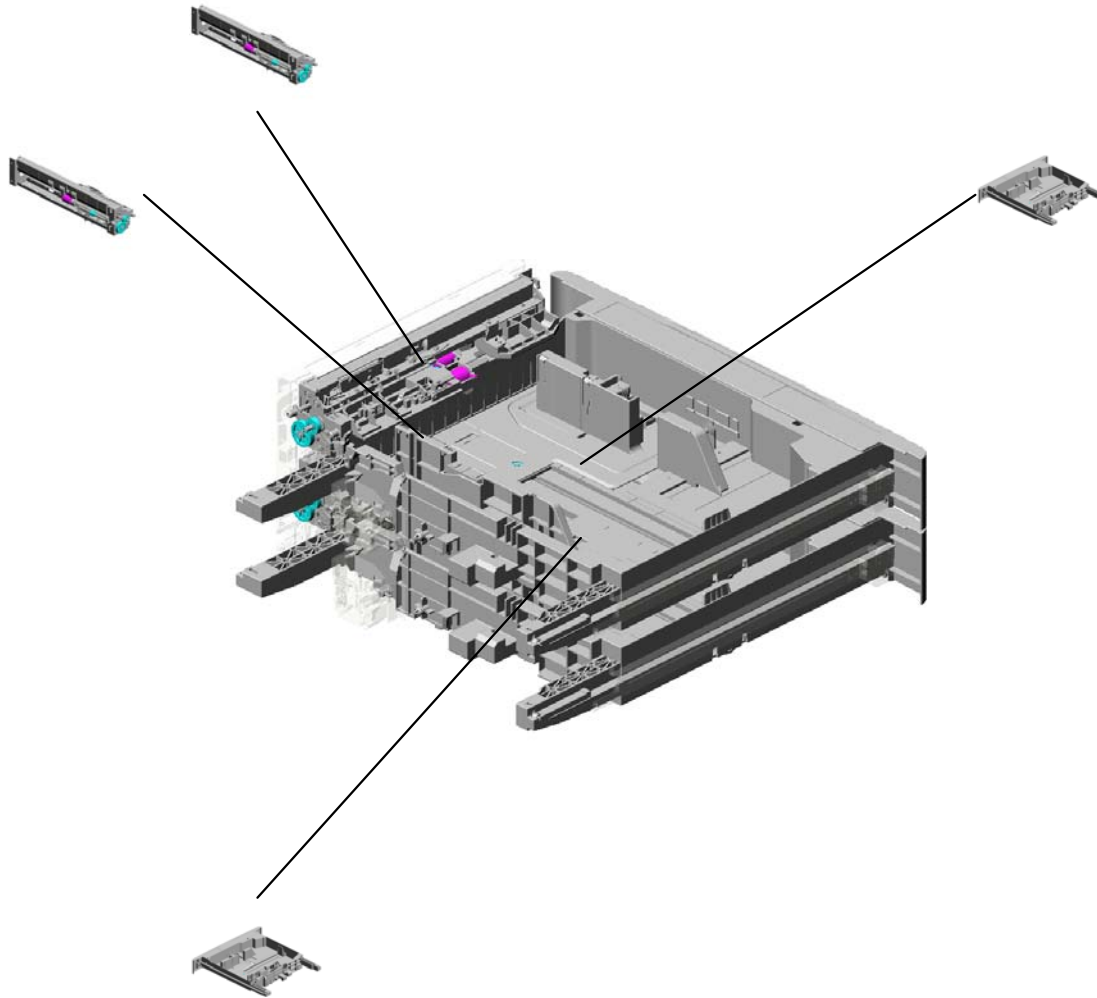


U002.PAPER FEED

U002_S001
D1442750
PAPER FEED UNIT:ASSY

U002_S002
D1442750
PAPER FEED UNIT:ASSY

U002_S003
D5802900
PAPER TRAY:NO.2:ASSY



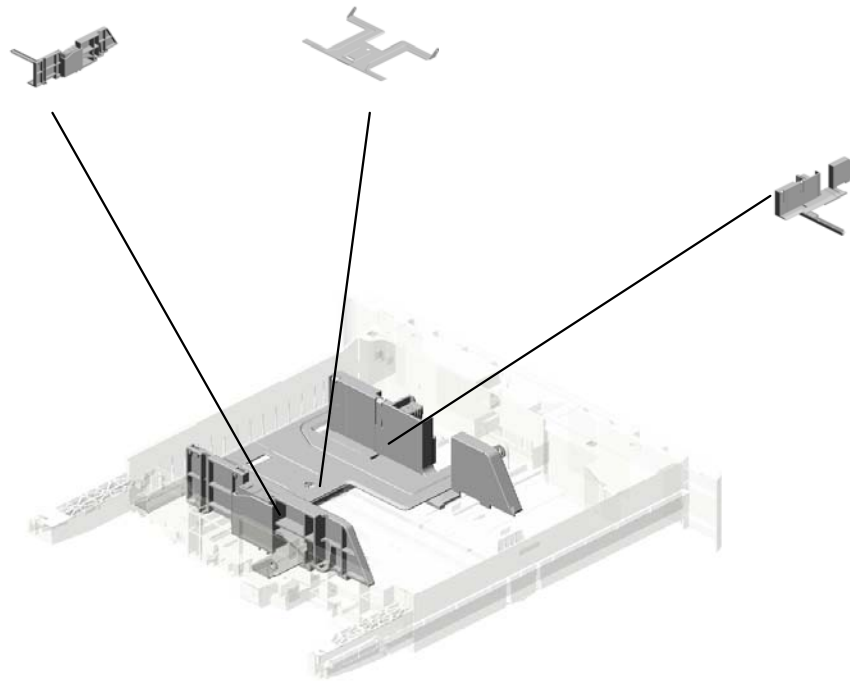
U002_S004
D5802900
PAPER TRAY:NO.2:ASSY

U002_S003.PAPER TRAY:NO.2:ASS'Y

U002_S003_S003
D1292930
SIDE FENCE:REAR:ASS'Y

U002_S003_S001
D0892940
TRAY BOTTOM PLATE:ASS'Y

U002_S003_S002
D1292920
SIDE FENCE:FRONT:ASS'Y



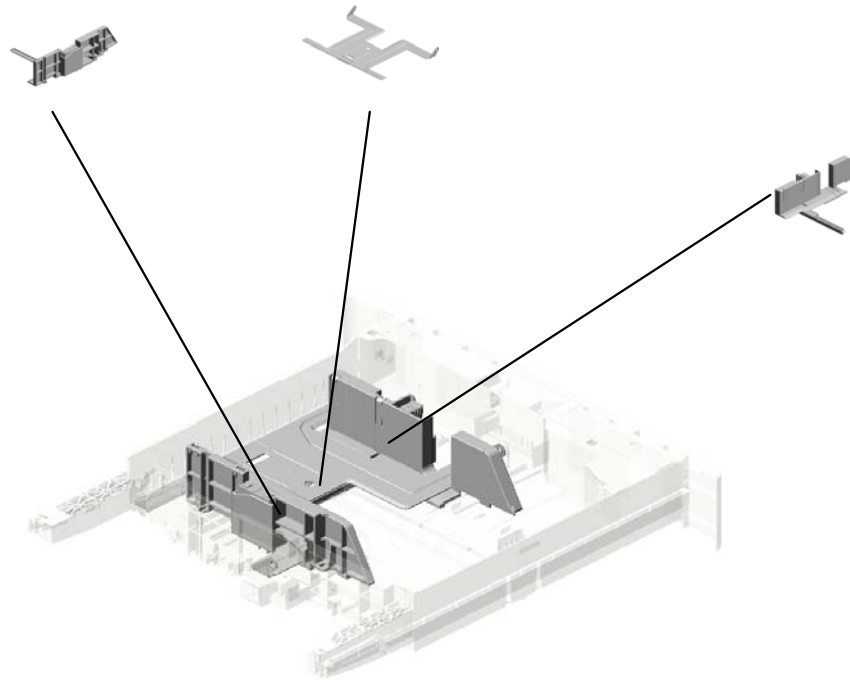
U001	U002	U003	U004	U005
------	-------------	------	------	------

U002_S004.PAPER TRAY:NO.2:ASS'Y

U002_S004_S003
D1292930
SIDE FENCE:REAR:ASS'Y

U002_S004_S001
D0892940
TRAY BOTTOM PLATE:ASS'Y

U002_S004_S002
D1292920
SIDE FENCE:FRONT:ASS'Y



U001	U002	U003	U004	U005
------	------	------	------	------

U002 PAPER FEED

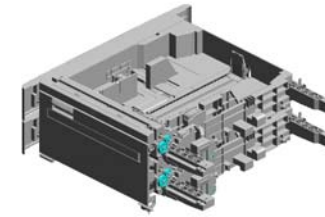
88.D3512651
GUIDE:VERTICAL
TRANSPORT:UPPE
R

65.D0092571
(x2)
HOLDER - VERTIC
AL TRANSPORT

69.D0092576
(x2)
SHAFT - VERTICAL
TRANSPORT

68.D0092575
(x2)
SHAFT - IDLER

8.04543008Q
(x4)
TAPPING SCREW:
3X8



66.D0092573
(x6)
PULLEY - VERTICA
L TRANSPORT

71.D0292677
(x6)
TRANSPORT BELT
:DRIVEN:VERTICA
L TRANSPORT

67.D0092574
(x6)
PULLEY - IDLER

84.D1292836
(x2)
GUIDE PLATE:SWI
VEL:ASS'Y
201203-01 X/O

1.03530080N
(x2)
SCREW:M3X8

63.B7934247
SCREW - M3X8

64.B8002588
BASE STOPPER S
TAY

38.AX040255
(x2)
DC MOTOR:RISING
TRAY:ASS'Y

89.D3512652
GUIDE:VERTICAL
TRANSPORT:LOW
ER

26.AA161163
CUSHION

90.D3512654
HOOK:FRONT:VER
TICAL TRANSPOR
T

2.04503010N
(x9)
TAPPING SCREW -
M3X10

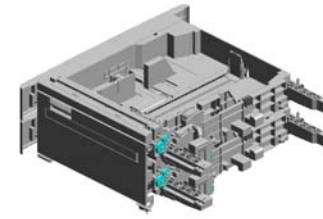
42.B2232715
(x2)
SUPPORTER - RIG
HT

7.04543006Q
(x14)
TAPPING SCREW -
M3X6

41.B2232710
(x2)
SUPPORTER - LEF
T NO.2

U002 PAPER FEED

92.D3512656 STAY:VERTICAL TRANSPORT
 97.D5802653 LEVER:VERTICAL TRANSPORT



95.D5802555 COVER:TRANSPORT:GUIDE

93.D3512672 POSITIONING PLATE:STAY:VERTICAL

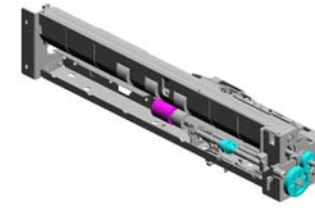
91.D3512655 HOOK:REAR:VERTICAL TRANSPORT

96.D5802650 COVER:VERTICAL TRANSPORT

101.G0602652 (x4) BUSHING - M4

94.D3512723 CUSHION:GUIDE:SWIVEL

U002_S001 PAPER FEED UNIT:ASS'Y



87.D1442750
PAPER FEED UNIT
:ASS'Y

- 27.AB010156 GEAR:SEPARATE: DRIVE
- 28.AB010157 GEAR:SEPARATE: DRIVEN
- 12.11050511 (x2) HARNESS CLAMP - LWS-0306ZC
- 9.04563008N TAPPING SCREW - M3X8
- 14.8050089 (x4) RETAINING RING - M4

13.52062686
(x2)
SNAP RING

22.AA062259
SPRING - RELEASE

18.AA060691
TENSION SPRING

23.AA082102
(x3)
BUSHING - 6X10X6

7.04543006Q
(x4)
TAPPING SCREW - M3X6

19.AA060693
TENSION SPRING

24.AA082143
BUSHING - 6X10X6

29.AB011218
GEAR - ROLLER C LUTCH

33.AF032085
PAPER FEED ROLLER - SEPARATE

30.AB011252
GEAR - 20Z

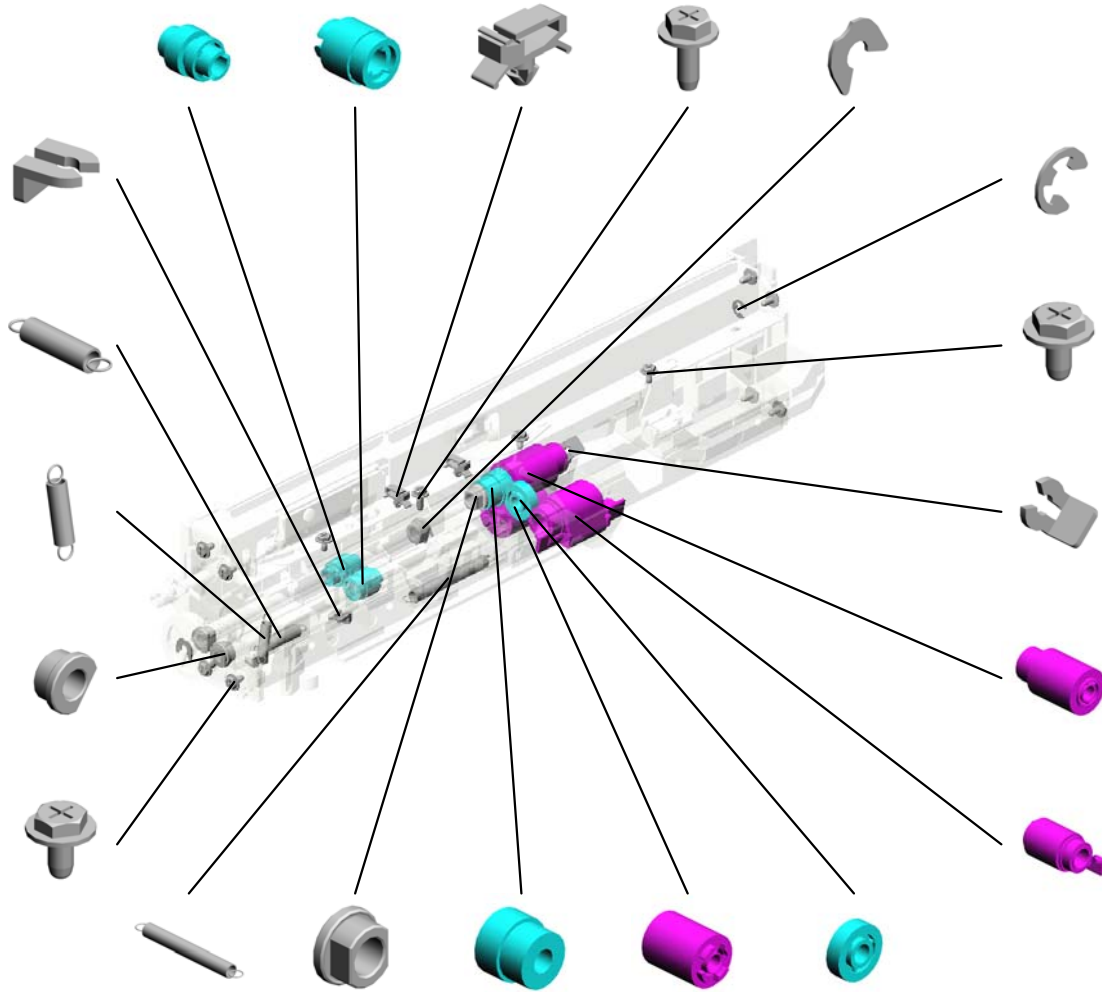
10.07200040E
RETAINING RING - M4

5.04513006N
(x7)
TAPPING SCREW - 3X6

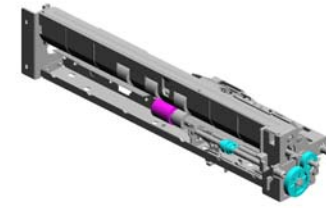
25.AA100014
(x2)
RETAINING RING C - SEPARATE

32.AF031085
PAPER FEED ROLLER - FEED

31.AF030085
PAPER FEED ROLLER - PICKUP



U002_S001 PAPER FEED UNIT:ASS'Y



87.D1442750
PAPER FEED UNIT
:ASS'Y

- 43.B2232762 FEED SHAFT
- 70.D0092757 TRANSPORT ROLLER:DRIVE:ASS'Y
- 35.AW010122 PAPER FEED SENSOR
- 46.B2232776 STAY
- 77.D0892781 BRACKET:SENSOR

47.B2232780 DC SOLENOID 24V

50.B2232815 SEPARATE DRIVE SHAFT

74.D0892764 GEAR:FEED

102.G0652767 LEVER - FEED

78.D0892819 GEAR:SEPARATOR:INPUT

37.AW020145 (x2) PHOTO INTERRUPTOR:FLAT

49.B2232810 SEPARATE DRIVE SHAFT

73.D0892761 ARM:PICKUP

44.B2232765 GROUND PLATE - FEED

75.D0892767 FEELER:PAPER END

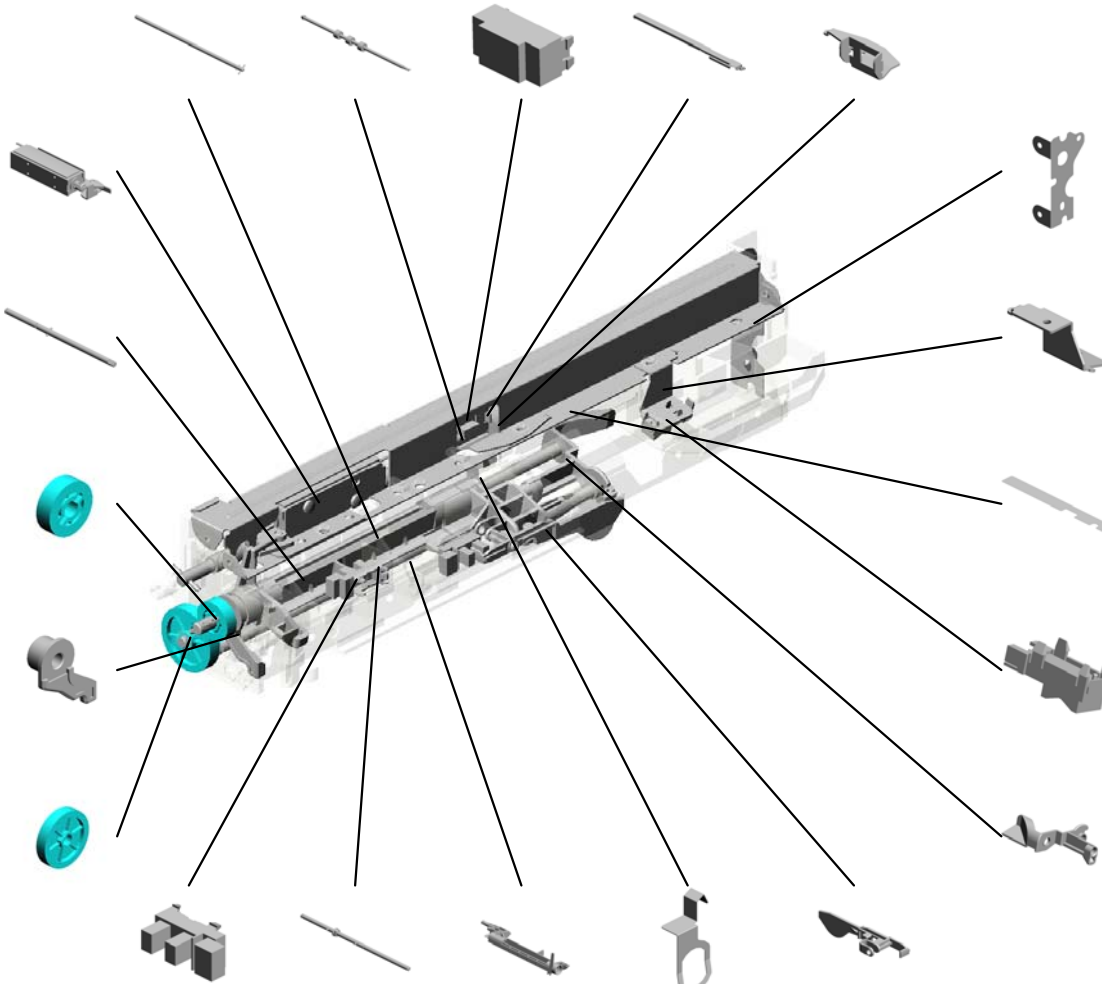
48.B2232786 GROUND PLATE - FRONT

76.D0892778 BRACKET:SENSOR:FEED

45.B2232772 HARNESS SHEET

36.AW010128 PAPER FEED SENSOR

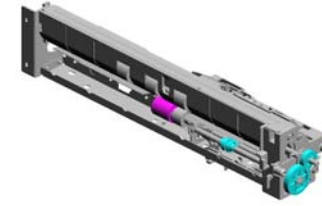
79.D0892829 GUIDE:FEED



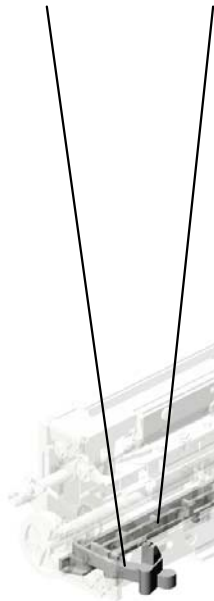
U002_S001
PAPER FEED UNIT:ASS'Y

105.G0652776
RELEASE LEVER

104.G0652775
LINK LEVER

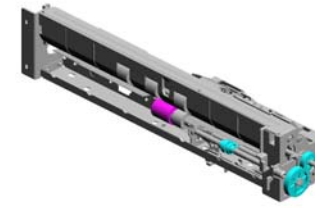


87.D1442750
PAPER FEED UNIT
:ASS'Y



103.G0652774
PRESSURE LEVER

U002_S002 PAPER FEED UNIT:ASS'Y



87.D1442750
PAPER FEED UNIT
:ASS'Y

- 28.AB010157 GEAR:SEPARATE:DRIVEN
- 12.11050511 (x2) HARNESS CLAMP - LWS-0306ZC
- 23.AA082102 (x3) BUSHING - 6X10X6
- 9.04563008N TAPPING SCREW - M3X8
- 14.8050089 (x4) RETAINING RING - M4

27.AB010156 GEAR:SEPARATE:DRIVE

13.52062686 (x2) SNAP RING

22.AA062259 SPRING - RELEASE

18.AA060691 TENSION SPRING

7.04543006Q (x4) TAPPING SCREW - M3X6

19.AA060693 TENSION SPRING

24.AA082143 BUSHING - 6X10X6

29.AB011218 GEAR - ROLLER C LUTCH

33.AF032085 PAPER FEED ROLLER - SEPARATE

30.AB011252 GEAR - 20Z

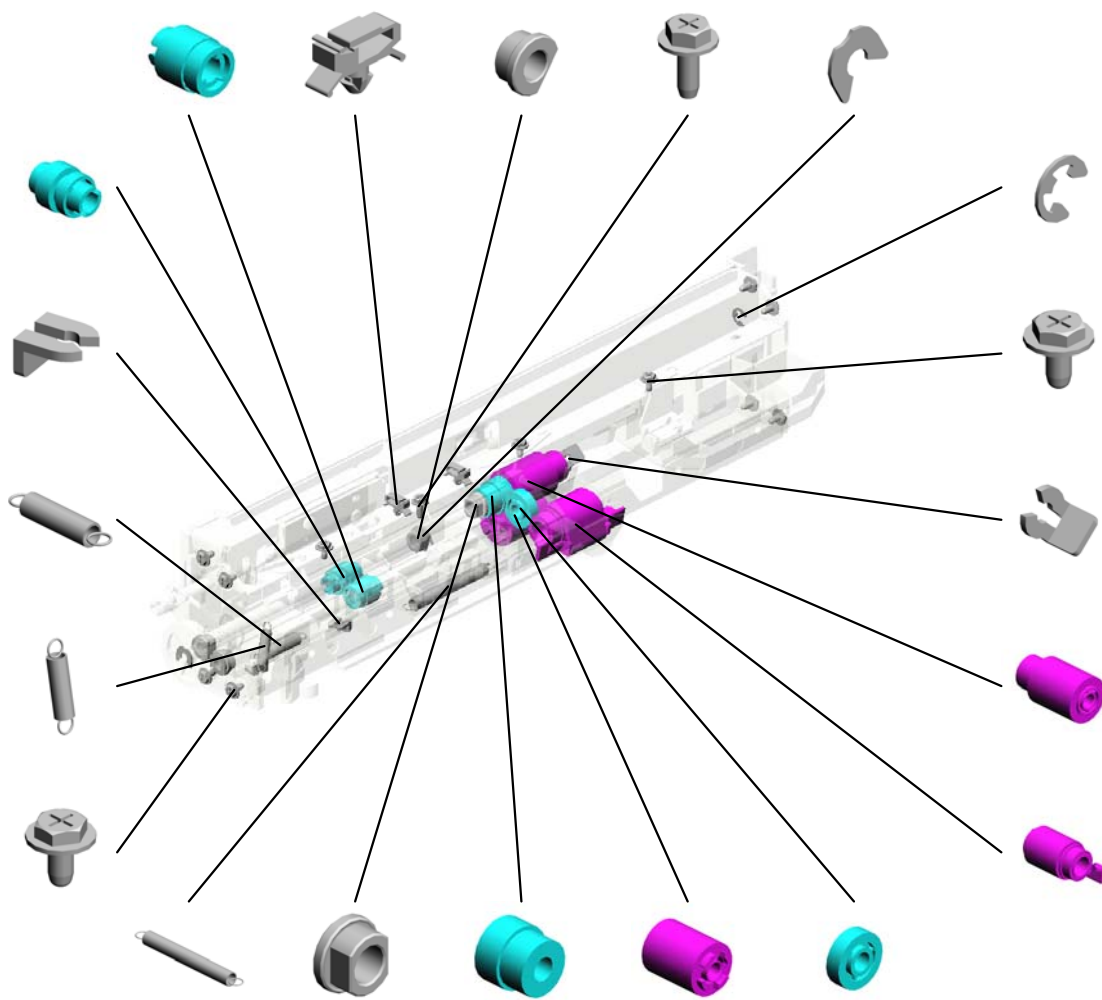
10.07200040E RETAINING RING - M4

5.04513006N (x7) TAPPING SCREW - 3X6

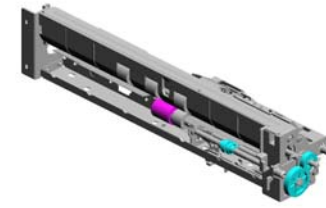
25.AA100014 (x2) RETAINING RING C - SEPARATE

32.AF031085 PAPER FEED ROLLER - FEED

31.AF030085 PAPER FEED ROLLER - PICKUP



U002_S002 PAPER FEED UNIT:ASS'Y



87.D1442750
PAPER FEED UNIT
:ASS'Y

- 43.B2232762 FEED SHAFT
- 70.D0092757 TRANSPORT ROLLER:DRIVE:ASS'Y
- 35.AW010122 PAPER FEED SENSOR
- 46.B2232776 STAY
- 77.D0892781 BRACKET:SENSOR

47.B2232780 DC SOLENOID 24V

37.AW020145 (x2) PHOTOINTERRUPTOR:FLAT

50.B2232815 SEPARATE DRIVE SHAFT

74.D0892764 GEAR:FEED

78.D0892819 GEAR:SEPARATOR:INPUT

49.B2232810 SEPARATE DRIVE SHAFT

73.D0892761 ARM:PICKUP

39.B0042783 TORQUE LIMITER

44.B2232765 GROUND PLATE - FEED

75.D0892767 FEELER:PAPER END

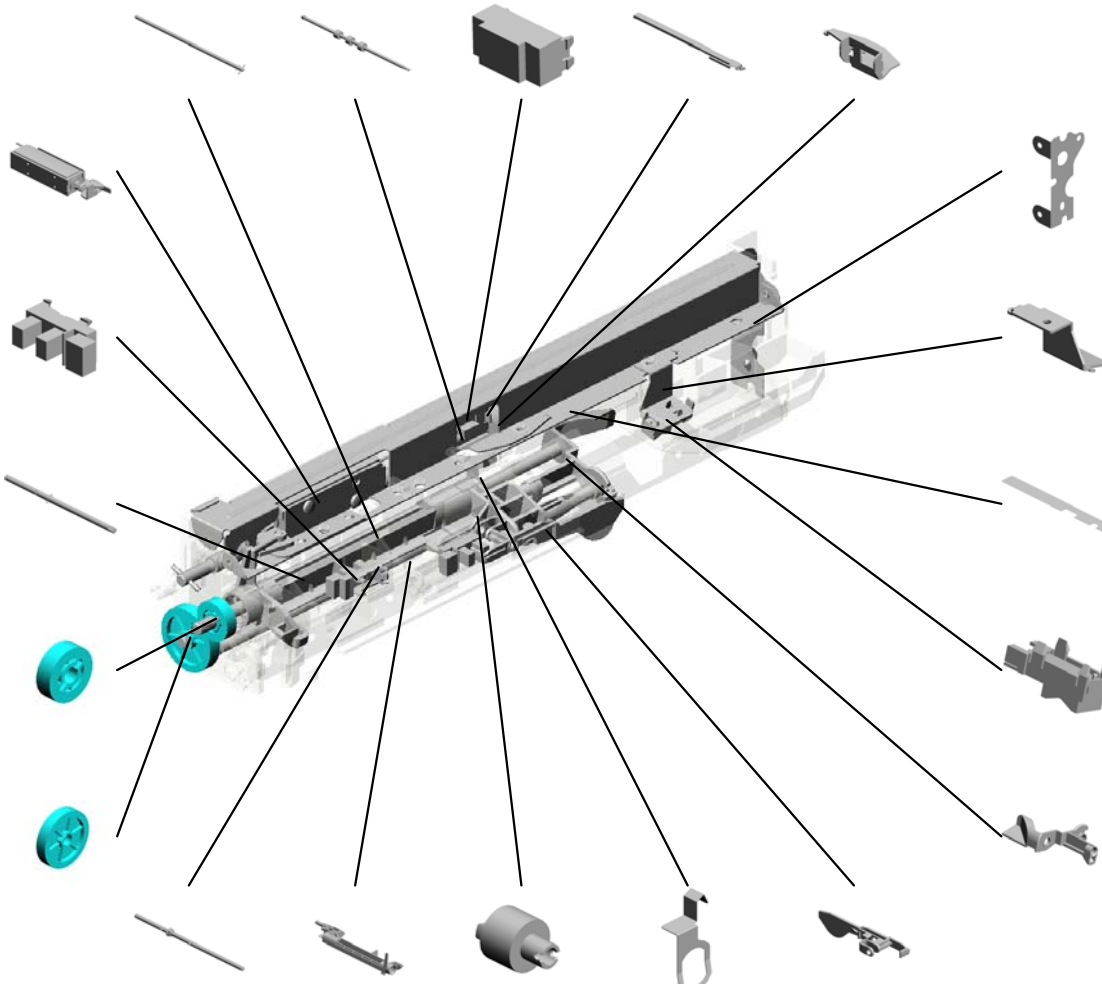
48.B2232786 GROUND PLATE - FRONT

76.D0892778 BRACKET:SENSOR:FEED

45.B2232772 HARNESS SHEET

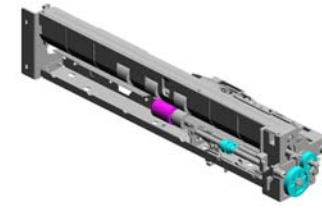
36.AW010128 PAPER FEED SENSOR

79.D0892829 GUIDE:FEED



U002_S002
PAPER FEED UNIT:ASS'Y

104.G0652775
LINK LEVER

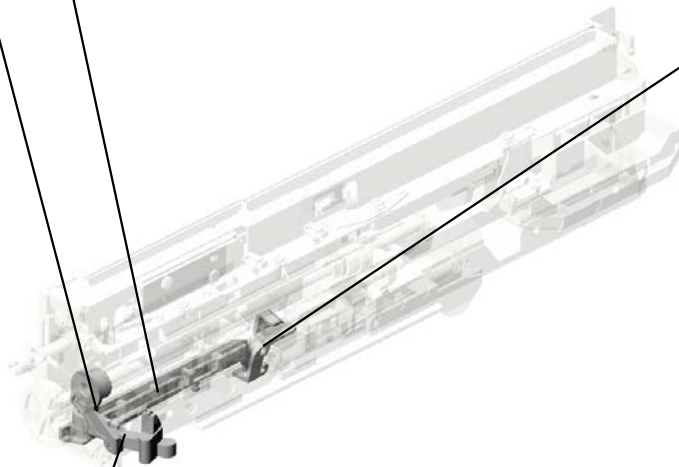


87.D1442750
PAPER FEED UNIT
:ASS'Y

102.G0652767
LEVER - FEED



103.G0652774
PRESSURE LEVER



105.G0652776
RELEASE LEVER



U002_S003
PAPER TRAY:NO.2:ASS'Y

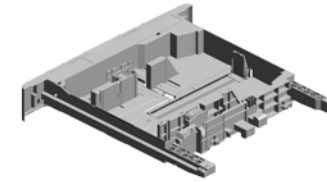
4.04504008N
(x2)
TAPPING SCREW -
M4X8

62.B2232936
GEAR - 16Z

54.B2232868
LEVER:RELEASE:P
APER TRAY:OUTE
R

11.07200080E
RETAINING RING -
M8

72.D0292863
SHAFT:RELEASE:P
APER TRAY



99.D5802900
PAPER TRAY:NO.2
:ASS'Y

58.B2232918
RISE LEVER

6.04533008N
BINDING SELF TAP
PING SCREW:3X8

53.B2232865
RISE NO.1 SHAFT

59.B2232919
GROUND PLATE -
PAPER TRAY NO.2

15.A2322987
(x4)
ROLLER - PAPER T
RAY

57.B2232911
SPACER

20.AA061003
TENSION SPRING:
SIDE FENCE:REAR

56.B2232910
LINK - PAPER SIZE
SENSOR

52.B2232862
LEVER - RELEASE
INNER

81.D1202832
END FENCE:ASS'Y

21.AA061014
TENSION SPRING:
GRIP

3.04503012N
(x2)
TAPPING SCREW:
3X12

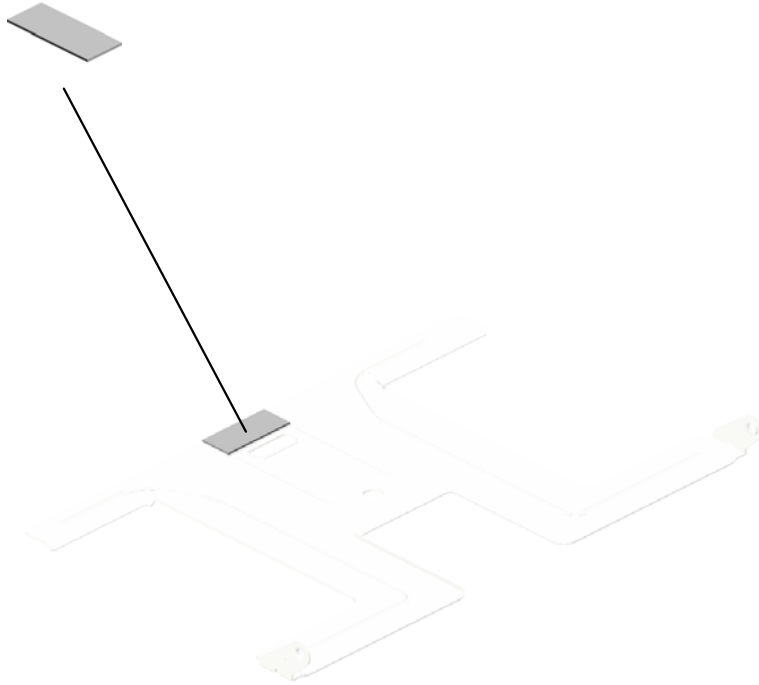
100.D5802946
COVER:PAPER TR
AY:NO.2

98.D5802870
GRIP:PAPER TRAY

51.B2232861
GRIP HOLDER

U002_S003_S001
TRAY BOTTOM PLATE:ASS'Y

34.AF033010
PAD

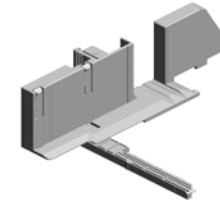


80.D0892940
TRAY BOTTOM PL
ATE:ASS'Y

U001	U002	U003	U004	U005
------	------	------	------	------

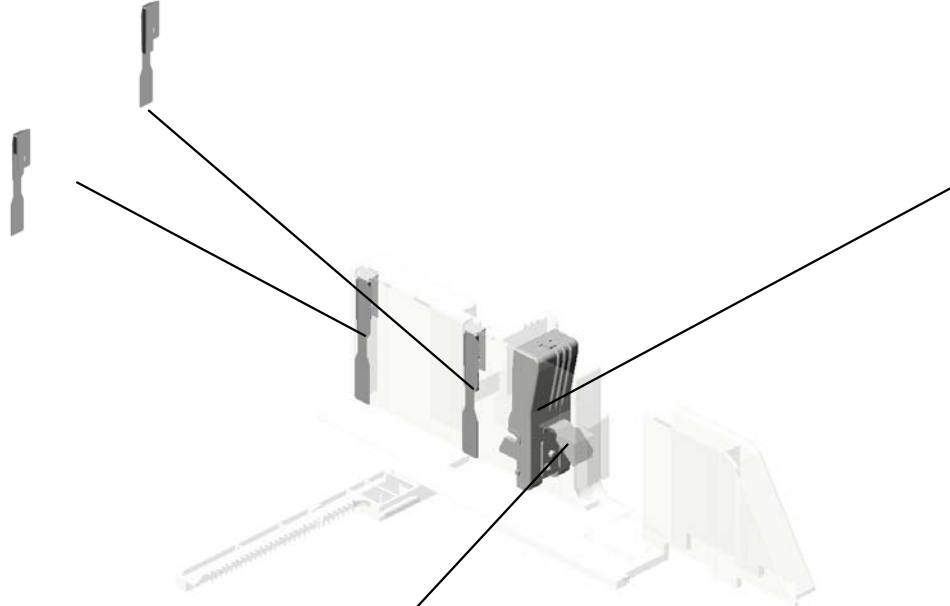
U002_S003_S002
SIDE FENCE:FRONT:ASS'Y

60.B2232934
PLATE - SIDE FEN
CE



85.D1292920
SIDE FENCE:FRON
T:ASS'Y

61.B2232935
PLATE - SIDE FEN
CE RIGHT



83.D1202924
LEVER:STOPPER:
FRONT

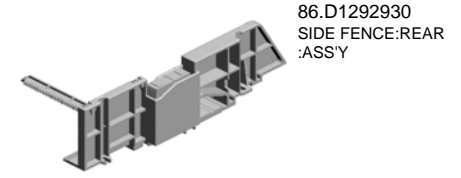
40.B0042923
SPRING PLATE - R
ELEASE LEVER



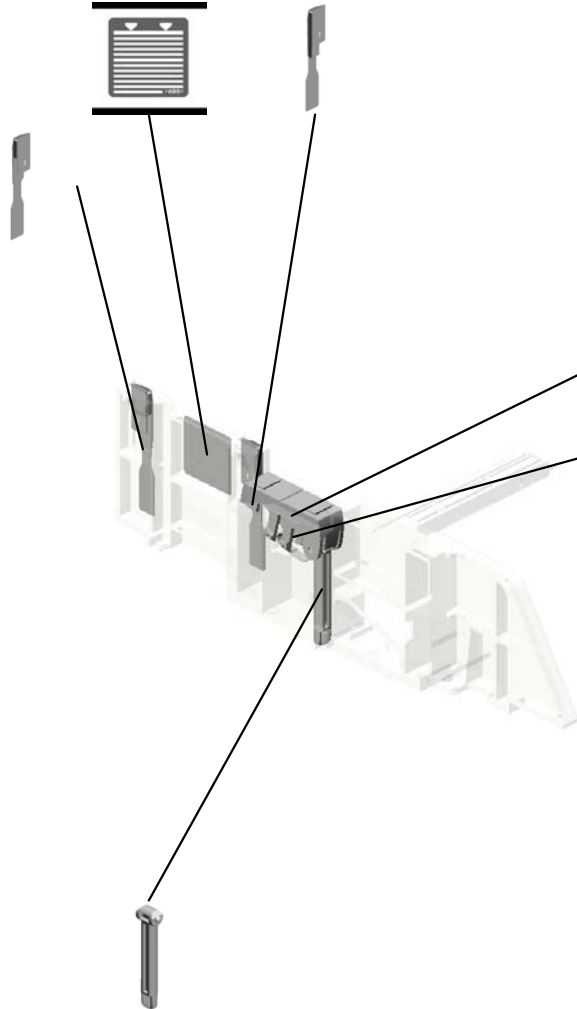
U001	U002	U003	U004	U005
------	------	------	------	------

U002_S003_S003
SIDE FENCE:REAR:ASS'Y

55.B2232873
DECAL - SIDE FEN
CE REAR
60.B2232934
PLATE - SIDE FEN
CE



61.B2232935
PLATE - SIDE FEN
CE RIGHT



82.D1202864
LEVER:STOPPER:
POSITIONING

16.A2672857
SPRING PLATE - SI
DE FENCE

17.A2672859
SIDE FENCE STOP
PER

U002_S004
PAPER TRAY:NO.2:ASS'Y

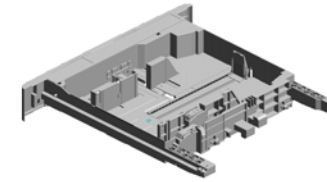
58.B2232918
RISE LEVER

62.B2232936
GEAR - 16Z

54.B2232868
LEVER:RELEASE:P
APER TRAY:OUTE
R

11.07200080E
RETAINING RING -
M8

72.D0292863
SHAFT:RELEASE:P
APER TRAY



99.D5802900
PAPER TRAY:NO.2
:ASS'Y

6.04533008N
BINDING SELF TAP
PING SCREW:3X8



53.B2232865
RISE NO.1 SHAFT



59.B2232919
GROUND PLATE -
PAPER TRAY NO.2



15.A2322987
(x4)
ROLLER - PAPER T
RAY



57.B2232911
SPACER



56.B2232910
LINK - PAPER SIZE
SENSOR



52.B2232862
LEVER - RELEASE
INNER



81.D1202832
END FENCE:ASS'Y



21.AA061014
TENSION SPRING:
GRIP



3.04503012N
(x2)
TAPPING SCREW:
3X12



100.D5802946
COVER:PAPER TR
AY:NO.2



98.D5802870
GRIP:PAPER TRAY

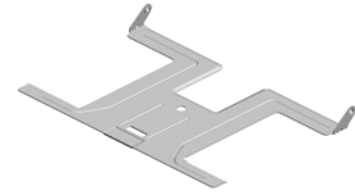
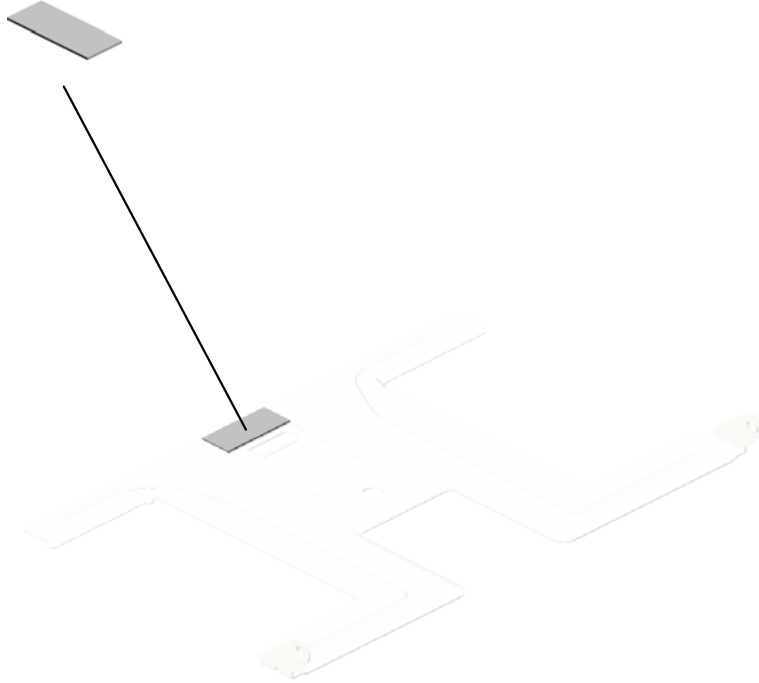


51.B2232861
GRIP HOLDER



U002_S004_S001
TRAY BOTTOM PLATE:ASS'Y

34.AF033010
PAD

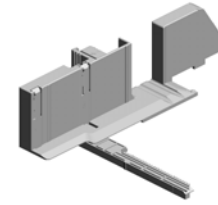


80.D0892940
TRAY BOTTOM PL
ATE:ASS'Y

U001	U002	U003	U004	U005
------	------	------	------	------

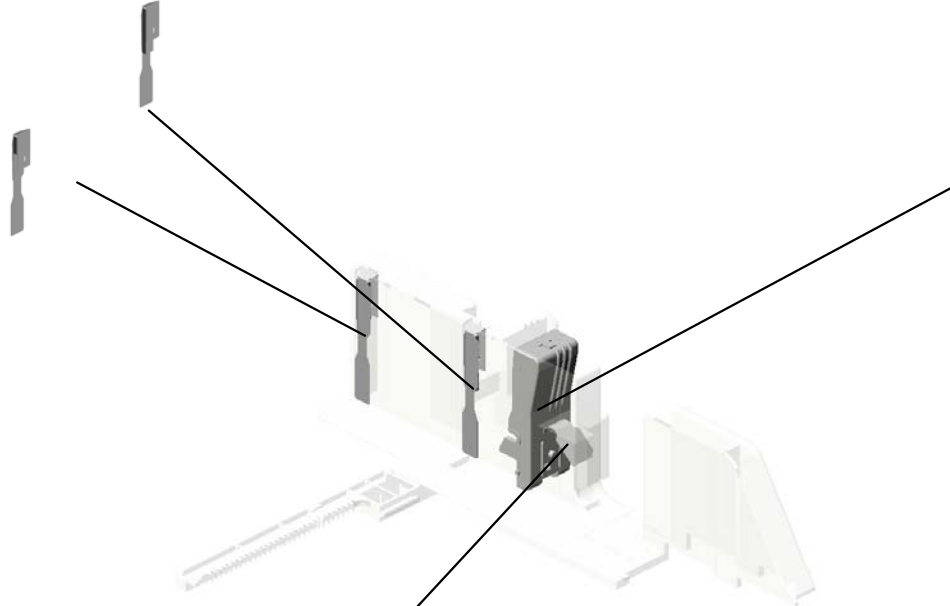
U002_S004_S002
SIDE FENCE:FRONT:ASS'Y

60.B2232934
PLATE - SIDE FEN
CE



85.D1292920
SIDE FENCE:FRON
T:ASS'Y

61.B2232935
PLATE - SIDE FEN
CE RIGHT

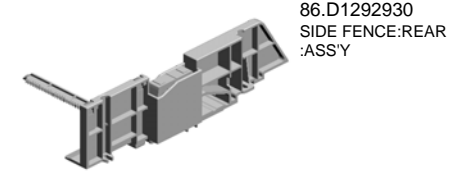


83.D1202924
LEVER:STOPPER:
FRONT

40.B0042923
SPRING PLATE - R
ELEASE LEVER

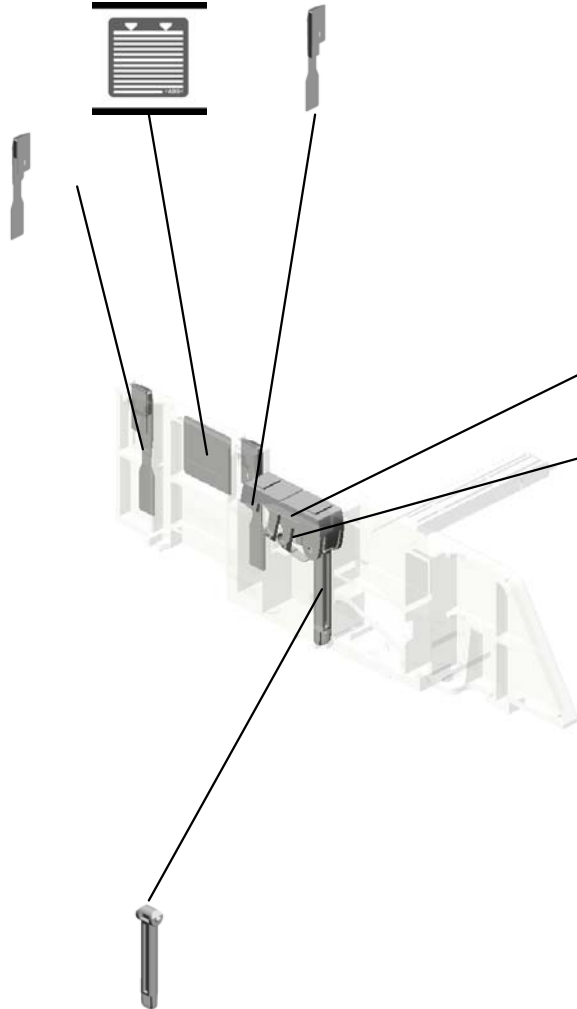
U002_S004_S003
SIDE FENCE:REAR:ASS'Y

55.B2232873
DECAL - SIDE FEN
CE REAR
60.B2232934
PLATE - SIDE FEN
CE



86.D1292930
SIDE FENCE:REAR
:ASS'Y

61.B2232935
PLATE - SIDE FEN
CE RIGHT



82.D1202864
LEVER:STOPPER:
POSITIONING



16.A2672857
SPRING PLATE - SI
DE FENCE



17.A2672859
SIDE FENCE STOP
PER



U003 ELECTRICAL

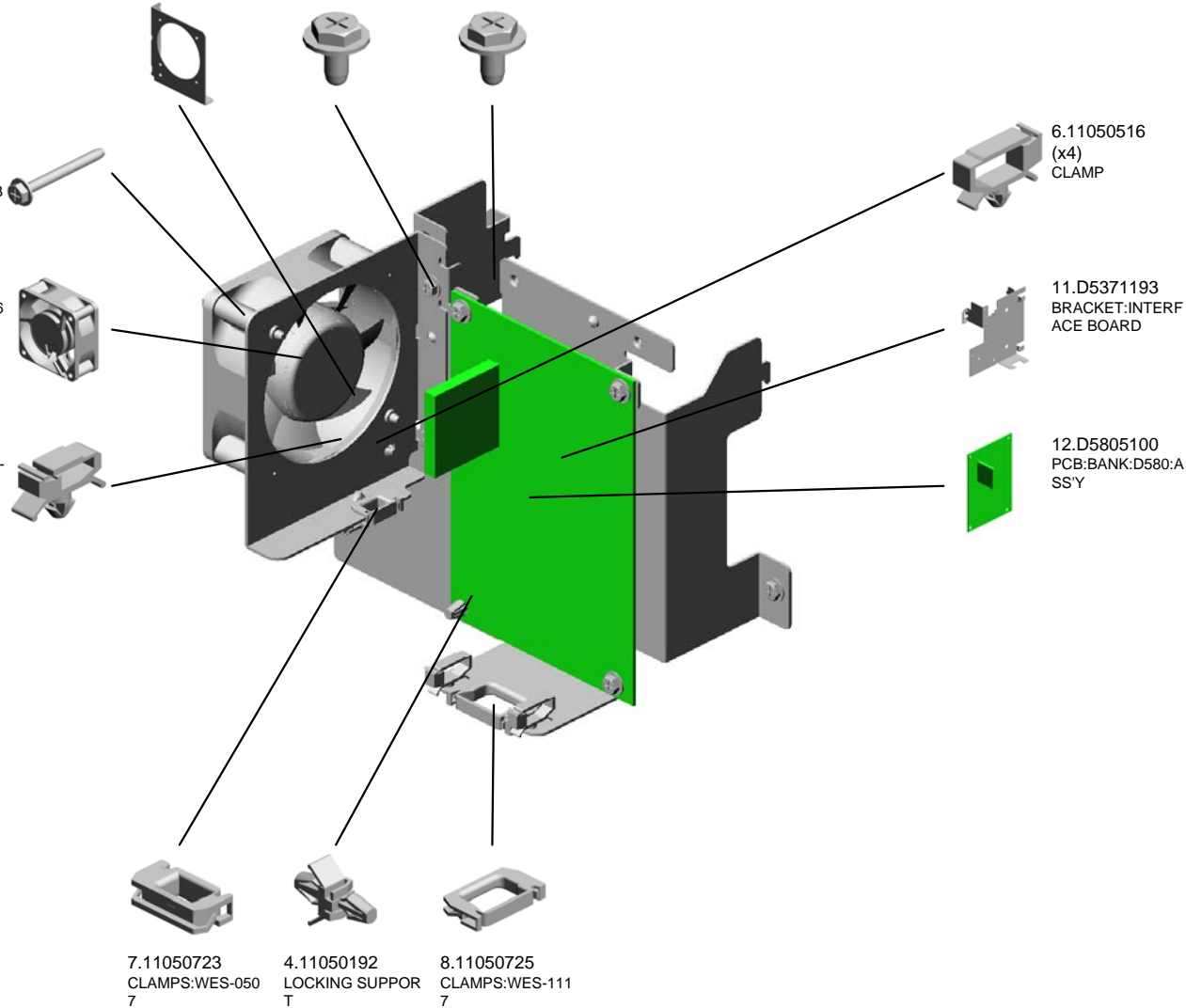


- 10.D5371161 BRACKET:DC FAN MOTOR
- 1.04513006N (x5) TAPPING SCREW - 3X6
- 2.04543006Q (x2) TAPPING SCREW - M3X6

- 3.04543030Q (x2) TAPPING SCREW: ROUND POINT:3X3 0

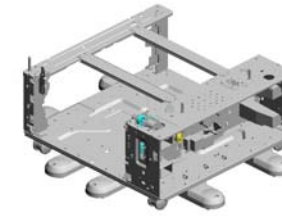
- 9.AX640170 FAN MOTOR - MM6 0 DC24V

- 5.11050511 HARNESS CLAMP - LWS-0306ZC



- 7.11050723 CLAMPS:WES-050 7
- 4.11050192 LOCKING SUPPORT
- 8.11050725 CLAMPS:WES-111 7

U004 MAIN FRAME



- 1.03140100N (x2) PAN HEAD SCREW :M4X10
- 14.8050088 (x2) RETAINING RING - M6
- 16.AA043593 (x2) TIMING BELT - 40S 3M324
- 7.07200060E (x4) RETAINING RING - M6
- 18.AA082101 (x6) BUSHING - 6X10X6

11.11050516
CLAMP



3.04513008N
(x2)
TAPPING SCREW - M3X8



17.AA043992
TIMING BELT:40S3 M129



15.AA043592
TIMING BELT - 40S 3M297



2.03603006N
(x4)
SCREW - M3X6



5.04543006Q
(x28)
TAPPING SCREW - M3X6



9.11050508
(x3)
HARNESS CLAMP - LWS-0711



10.11050511
(x6)
HARNESS CLAMP - LWS-0306ZC



13.12042529
SWITCH - V-5F912 DN



4.04513014N
TAPPING SCREW: 3X14



20.AA100014
(x2)
RETAINING RING C - SEPARATE



6.07200040E
(x7)
RETAINING RING - M4



19.AA082102
(x2)
BUSHING - 6X10X6



12.11050522
(x3)
EDGE SADDLE - L ES0510

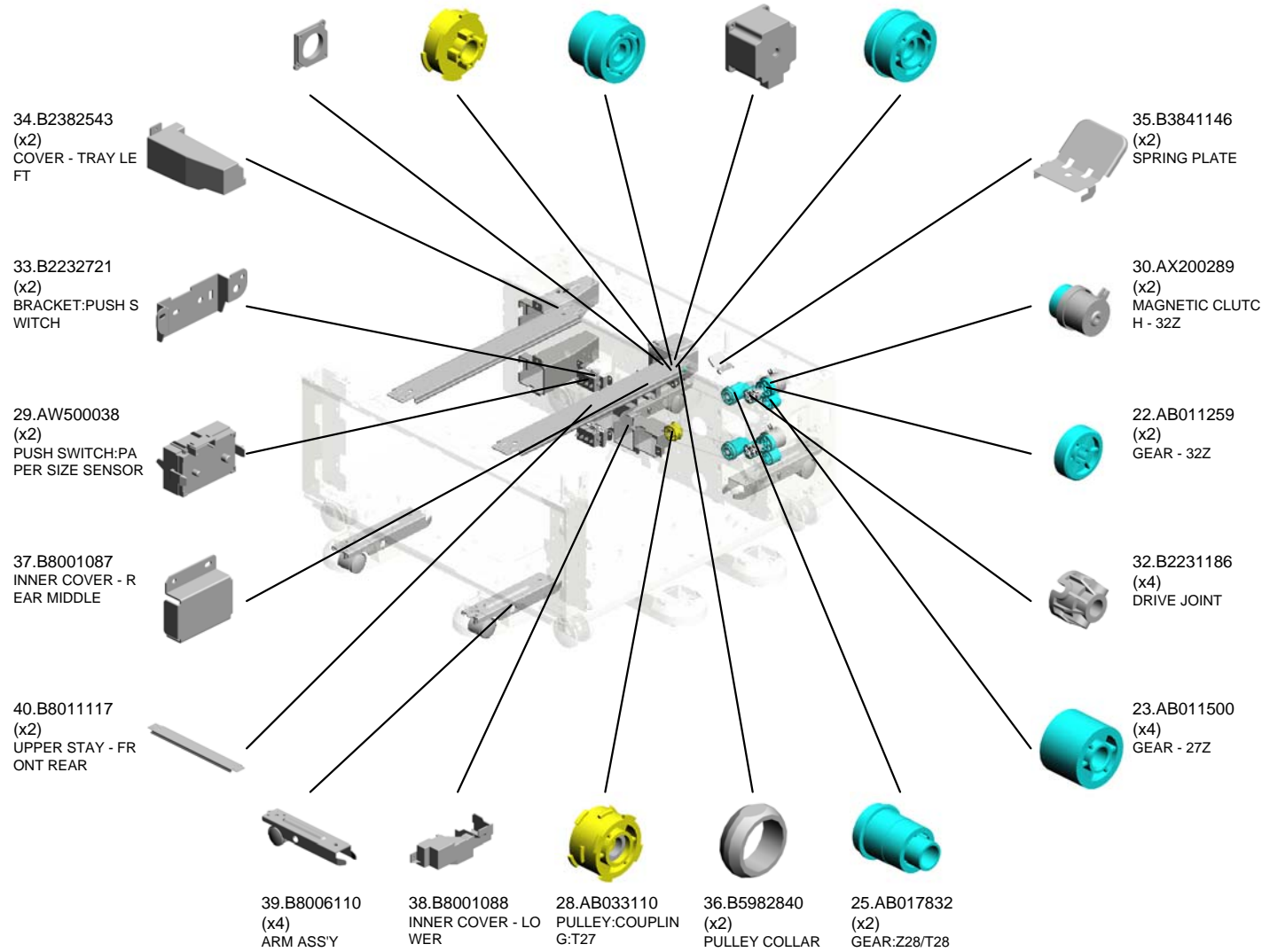
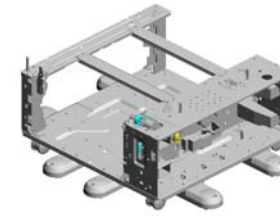


8.11050487
(x2)
HARNESS CLAMP

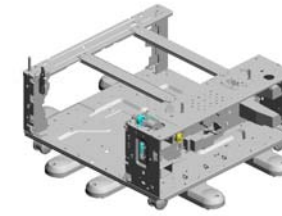


U004 MAIN FRAME

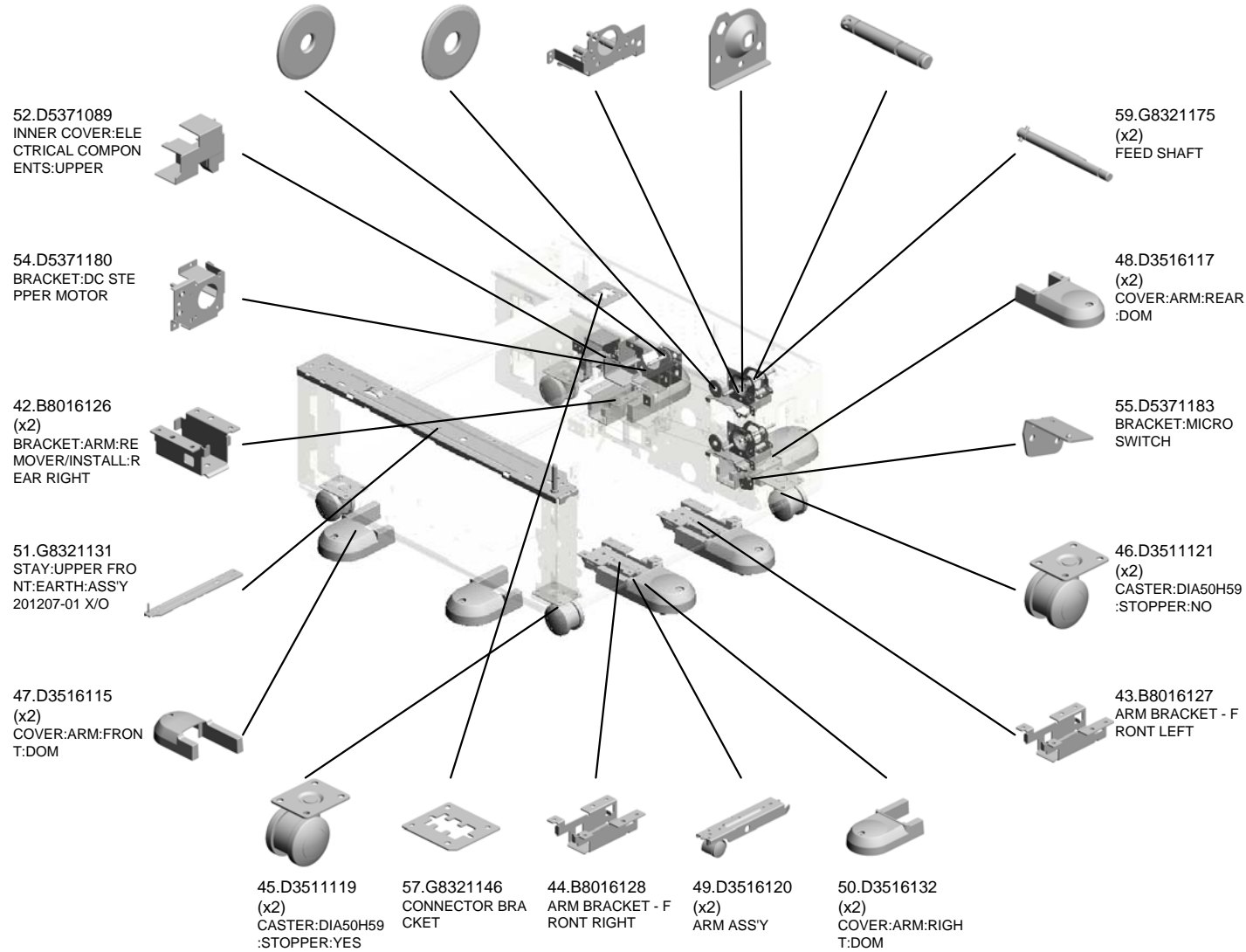
21.AA161174 CUSHION:DC STEPPER MOTOR
 27.AB030843 TIMING PULLEY:T27
 26.AB017833 GEAR:PULLEY:Z21 T22
 31.B1544521 STEPPER MOTOR:MM56:ASSY
 24.AB017729 GEAR/PULLEY - 28 Z/28T



U004 MAIN FRAME

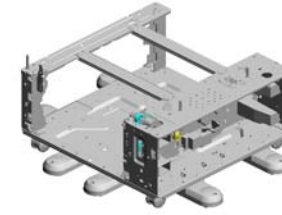


- 56.D5371327 SPACER:TIMING BELT
- 41.B8011184 (x2) TIMING BELT SPACER
- 53.D5371140 (x2) BRACKET:DRIVE UNIT
- 58.G8321161 (x2) DRUM STAY
- 60.G8321178 (x2) GRIP SHAFT

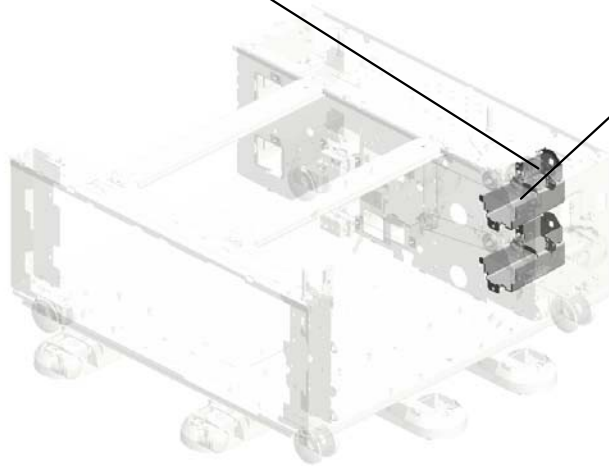


U004
MAIN FRAME

62.G8323619
(x2)
MAGNETIC CLUTCH
H BRACKET



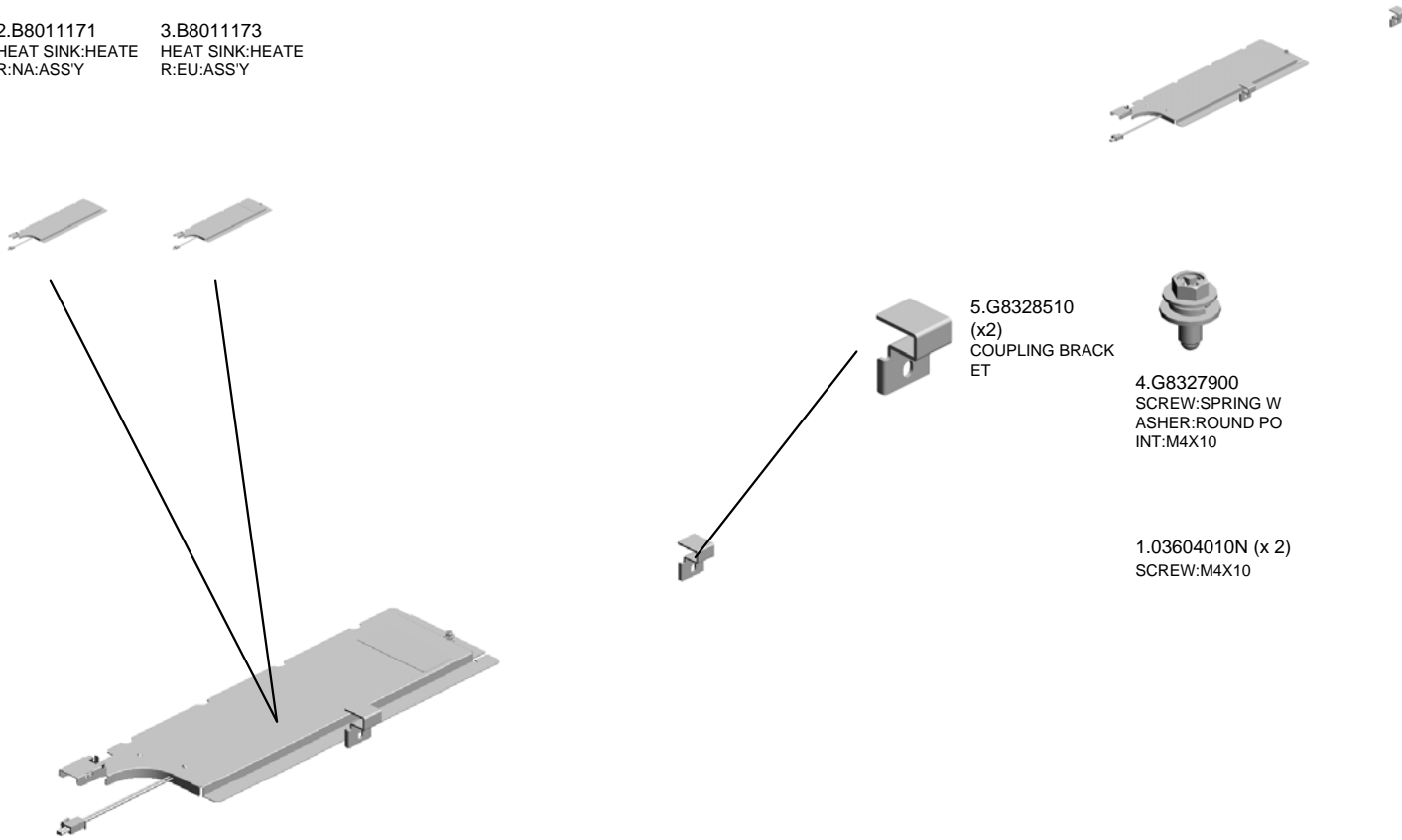
61.G8322951
(x2)
COVER - REAR RI
GHT



U005 ACCESSORIES

2.B8011171
HEAT SINK:HEATE
R:NA:ASS'Y

3.B8011173
HEAT SINK:HEATE
R:EU:ASS'Y



5.G8328510
(x2)
COUPLING BRACK
ET

4.G8327900
SCREW:SPRING W
ASHER:ROUND PO
INT:M4X10

1.03604010N (x 2)
SCREW:M4X10

Exclusive Parts

Number	Part Name	Group	ID
52062686	SNAP RING	U002_S001	13
		U002_S002	13
8050088	RETAINING RING - M6	U004	14
8050089	RETAINING RING - M4	U002_S001	14
		U002_S002	14
A2322987	ROLLER - PAPER TRAY	U002_S003	15
		U002_S004	15
A2672857	SPRING PLATE - SIDE FENCE	U002_S003_S003	16
		U002_S004_S003	16
A2672859	SIDE FENCE STOPPER	U002_S003_S003	17
		U002_S004_S003	17
AA043592	TIMING BELT - 40S3M297	U004	15
AA043593	TIMING BELT - 40S3M324	U004	16
AA043992	TIMING BELT:40S3M129	U004	17
AA060691	TENSION SPRING	U002_S001	18
		U002_S002	18
AA060693	TENSION SPRING	U002_S001	19
		U002_S002	19
AA061003	TENSION SPRING:SIDE FENCE:REAR	U002_S003	20
AA061014	TENSION SPRING:GRIP	U002_S003	21
		U002_S004	21
AA062259	SPRING - RELEASE	U002_S001	22
		U002_S002	22
AA082101	BUSHING - 6X10X6	U004	18
AA082102	BUSHING - 6X10X6	U002_S001	23
		U002_S002	23
		U004	19
AA082143	BUSHING - 6X10X6	U002_S001	24
		U002_S002	24
AA100014	RETAINING RING C - SEPARATE	U002_S001	25
		U002_S002	25
		U004	20
AA161163	CUSHION	U002	26
AA161174	CUSHION:DC STEPPER MOTOR	U004	21
AB010156	GEAR:SEPARATE:DRIVE	U002_S001	27
		U002_S002	27
AB010157	GEAR:SEPARATE:DRIVEN	U002_S001	28

Number	Part Name	Group	ID
		U002_S002	28
		U002_S001	29
AB011218	GEAR - ROLLER CLUTCH	U002_S002	29
		U002_S001	30
AB011252	GEAR - 20Z	U002_S002	30
		U002_S001	30
AB011259	GEAR - 32Z	U004	22
AB011500	GEAR - 27Z	U004	23
AB017729	GEAR/PULLEY - 28Z/28T	U004	24
AB017832	GEAR:Z28/T28	U004	25
AB017833	GEAR:PULLEY:Z21T22	U004	26
AB030843	TIMING PULLEY:T27	U004	27
AB033110	PULLEY:COUPLING:T27	U004	28
AF030085	PAPER FEED ROLLER - PICKUP	U002_S001	31
		U002_S002	31
AF031085	PAPER FEED ROLLER - FEED	U002_S001	32
		U002_S002	32
AF032085	PAPER FEED ROLLER - SEPARATE	U002_S001	33
		U002_S002	33
AF033010	PAD	U002_S003_S001	34
		U002_S004_S001	34
AW010122	PAPER FEED SENSOR	U002_S001	35
		U002_S002	35
AW010128	PAPER FEED SENSOR	U002_S001	36
		U002_S002	36
AW020145	PHOTOINTERRUPTOR:FLAT	U002_S001	37
		U002_S002	37
AW500038	PUSH SWITCH:PAPER SIZE SENSOR	U004	29
AX040255	DC MOTOR:RISING TRAY:ASS'Y	U002	38
AX200289	MAGNETIC CLUTCH - 32Z	U004	30
AX640170	FAN MOTOR - MM60 DC24V	U003	9
B0042783	TORQUE LIMITER	U002_S002	39
B0042923	SPRING PLATE - RELEASE LEVER	U002_S003_S002	40
		U002_S004_S002	40
B1544521	STEPPER MOTOR:MM56:ASS'Y	U004	31
B2231186	DRIVE JOINT	U004	32
B2232710	SUPPORTER - LEFT NO.2	U002	41
B2232715	SUPPORTER - RIGHT	U002	42

Exclusive Parts

Number	Part Name	Group	ID
B2232721	BRACKET:PUSH SWITCH	U004	33
B2232762	FEED SHAFT	U002_S001	43
		U002_S002	43
B2232765	GROUND PLATE - FEED	U002_S001	44
		U002_S002	44
B2232772	HARNESS SHEET	U002_S001	45
		U002_S002	45
B2232776	STAY	U002_S001	46
		U002_S002	46
B2232780	DC SOLENOID 24V	U002_S001	47
		U002_S002	47
B2232786	GROUND PLATE - FRONT	U002_S001	48
		U002_S002	48
B2232810	SEPARATE DRIVEN SHAFT	U002_S001	49
		U002_S002	49
B2232815	SEPARATE DRIVE SHAFT	U002_S001	50
		U002_S002	50
B2232861	GRIP HOLDER	U002_S003	51
		U002_S004	51
B2232862	LEVER - RELEASE INNER	U002_S003	52
		U002_S004	52
B2232865	RISE NO.1 SHAFT	U002_S003	53
		U002_S004	53
B2232868	LEVER:RELEASE:PAPER TRAY:OUTER	U002_S003	54
		U002_S004	54
B2232873	DECAL - SIDE FENCE REAR	U002_S003_S003	55
		U002_S004_S003	55
B2232910	LINK - PAPER SIZE SENSOR	U002_S003	56
		U002_S004	56
B2232911	SPACER	U002_S003	57
		U002_S004	57
B2232918	RISE LEVER	U002_S003	58
		U002_S004	58
B2232919	GROUND PLATE - PAPER TRAY NO.2	U002_S003	59
		U002_S004	59
B2232934	PLATE - SIDE FENCE	U002_S003_S002	60
		U002_S003_S003	60
		U002_S004_S002	60

Number	Part Name	Group	ID
		U002_S004_S003	60
B2232935	PLATE - SIDE FENCE RIGHT	U002_S003_S002	61
		U002_S003_S003	61
		U002_S004_S002	61
		U002_S004_S003	61
B2232936	GEAR - 16Z	U002_S003	62
		U002_S004	62
B2382543	COVER - TRAY LEFT	U004	34
B3841146	SPRING PLATE	U004	35
B5982840	PULLEY COLLAR	U004	36
B7934247	SCREW - M3X8	U002	63
B8001087	INNER COVER - REAR MIDDLE	U004	37
B8001088	INNER COVER - LOWER	U004	38
B8002588	BASE STOPPER STAY	U002	64
B8006110	ARM ASS'Y	U004	39
B8011117	UPPER STAY - FRONT REAR	U004	40
B8011171	HEAT SINK:HEATER:NA:ASS'Y	U005	2
B8011173	HEAT SINK:HEATER:EU:ASS'Y	U005	3
B8011184	TIMING BELT SPACER	U004	41
B8016126	BRACKET:ARM:REMOVER/INSTALL:REAR RIGHT	U004	42
B8016127	ARM BRACKET - FRONT LEFT	U004	43
B8016128	ARM BRACKET - FRONT RIGHT	U004	44
D0092571	HOLDER - VERTICAL TRANSPORT	U002	65
D0092573	PULLEY - VERTICAL TRANSPORT	U002	66
D0092574	PULLEY - IDLER	U002	67
D0092575	SHAFT - IDLER	U002	68
D0092576	SHAFT - VERTICAL TRANSPORT	U002	69
D0092757	TRANSPORT ROLLER:DRIVE:ASS'Y	U002_S001	70
		U002_S002	70
D0292677	TRANSPORT BELT:DRIVEN:VERTICAL TRANSPORT	U002	71
D0292863	SHAFT:RELEASE:PAPER TRAY	U002_S003	72
		U002_S004	72
D0892761	ARM:PICKUP	U002_S001	73
		U002_S002	73
D0892764	GEAR:FEED	U002_S001	74
		U002_S002	74

Exclusive Parts

Number	Part Name	Group	ID
D0892767	FEELER:PAPER END	U002_S001	75
		U002_S002	75
D0892778	BRACKET:SENSOR:FEED	U002_S001	76
		U002_S002	76
D0892781	BRACKET:SENSOR	U002_S001	77
		U002_S002	77
D0892819	GEAR:SEPARATOR:INPUT	U002_S001	78
		U002_S002	78
D0892829	GUIDE:FEED	U002_S001	79
		U002_S002	79
D0892940	TRAY BOTTOM PLATE:ASS'Y	U002_S003_S001	80
		U002_S004_S001	80
D1202832	END FENCE:ASS'Y	U002_S003	81
		U002_S004	81
D1202864	LEVER:STOPPER:POSITIONING	U002_S003_S003	82
		U002_S004_S003	82
D1202924	LEVER:STOPPER:FRONT	U002_S003_S002	83
		U002_S004_S002	83
D1292836	GUIDE PLATE:SWIVEL:ASS'Y	U002	84
D1292920	SIDE FENCE:FRONT:ASS'Y	U002_S003_S002	85
		U002_S004_S002	85
D1292930	SIDE FENCE:REAR:ASS'Y	U002_S003_S003	86
		U002_S004_S003	86
D1442750	PAPER FEED UNIT:ASS'Y	U002_S001	87
		U002_S002	87
D3511119	CASTER:DIA50H59:STOPPER:YES	U004	45
D3511121	CASTER:DIA50H59:STOPPER:NO	U004	46
D3512651	GUIDE:VERTICAL TRANSPORT:UPPER	U002	88
D3512652	GUIDE:VERTICAL TRANSPORT:LOWER	U002	89
D3512654	HOOK:FRONT:VERTICAL TRANSPORT	U002	90
D3512655	HOOK:REAR:VERTICAL TRANSPORT	U002	91
D3512656	STAY:VERTICAL TRANSPORT	U002	92
D3512672	POSITIONING PLATE:STAY:VERTICAL	U002	93

Number	Part Name	Group	ID
D3512723	CUSHION:GUIDE:SWIVEL	U002	94
D3516115	COVER:ARM:FRONT:DOM	U004	47
D3516117	COVER:ARM:REAR:DOM	U004	48
D3516120	ARM ASS'Y	U004	49
D3516132	COVER:ARM:RIGHT:DOM	U004	50
D5371089	INNER COVER:ELECTRICAL COMPONENTS:UPPER	U004	52
D5371140	BRACKET:DRIVE UNIT	U004	53
D5371161	BRACKET:DC FAN MOTOR	U003	10
D5371180	BRACKET:DC STEPPER MOTOR	U004	54
D5371183	BRACKET:MICRO SWITCH	U004	55
D5371193	BRACKET:INTERFACE BOARD	U003	11
D5371327	SPACER:TIMING BELT	U004	56
D5801260	COVER:LEFT	U001	2
D5801271	COVER:RIGHT	U001	3
D5801273	CAP:COUPLING	U001	4
D5801281	COVER:REAR	U001	5
D5801290	COVER:UPPER FRONT	U001	6
D5802555	COVER:TRANSPORT:GUIDE	U002	95
D5802564	COVER:CONNECTOR:LCT	U001	7
D5802650	COVER:VERTICAL TRANSPORT	U002	96
D5802653	LEVER:VERTICAL TRANSPORT	U002	97
D5802870	GRIP:PAPER TRAY	U002_S003	98
		U002_S004	98
D5802900	PAPER TRAY:NO.2:ASS'Y	U002_S003	99
		U002_S004	99
D5802946	COVER:PAPER TRAY:NO.2	U002_S003	100
		U002_S004	100
D5805100	PCB:BANK:D580:ASS'Y	U003	12
G0602652	BUSHING - M4	U002	101
G0652767	LEVER - FEED	U002_S001	102
		U002_S002	102
G0652774	PRESSURE LEVER	U002_S001	103
		U002_S002	103
G0652775	LINK LEVER	U002_S001	104
		U002_S002	104
G0652776	RELEASE LEVER	U002_S001	105
		U002_S002	105

Exclusive Parts

Number	Part Name	Group	ID
G8321131	STAY:UPPER FRONT:EARTH:ASS' Y	U004	51
G8321146	CONNECTOR BRACKET	U004	57
G8321161	DRUM STAY	U004	58
G8321175	FEED SHAFT	U004	59
G8321178	GRIP SHAFT	U004	60
G8322951	COVER - REAR RIGHT	U004	61
G8323619	MAGNETIC CLUTCH BRACKET	U004	62
G8327900	SCREW:SPRING WASHER:ROUND POINT:M4X10	U005	4
G8328510	COUPLING BRACKET	U005	5

Standard Parts



03140100N
PAN HEAD SCREW:M4X10



03530080N
SCREW:M3X8



03603006N
SCREW - M3X6



03604010N
SCREW:M4X10



04503010N
TAPPING SCREW - M3X10



04503012N
TAPPING SCREW:3X12



04504008N
TAPPING SCREW - M4X8



04513006N
TAPPING SCREW - 3X6



04513008N
TAPPING SCREW - M3X8



04513014N
TAPPING SCREW:3X14



04533008N
BINDING SELF TAPPING SCREW:3X8



04543006Q
TAPPING SCREW - M3X6



04543008Q
TAPPING SCREW:3X8



04543030Q
TAPPING SCREW:ROUND POINT:3X30



04563008N
TAPPING SCREW - M3X8



07200040E
RETAINING RING - M4



07200060E
RETAINING RING - M6



07200080E
RETAINING RING - M8



11050192
LOCKING SUPPORT



11050487
HARNESS CLAMP



11050508
HARNESS CLAMP - LWS-071
1



11050511
HARNESS CLAMP - LWS-030
6ZC



11050516
CLAMP



11050522
EDGE SADDLE - LES0510



11050723
CLAMPS:WES-0507



11050725
CLAMPS:WES-1117



12042529
SWITCH - V-5F912DN

Design Change List

Number	Title	Set	Old Part		New Part		Index No.		Q'ty	Interchg		Reason	Cut-in S/N
			P/N	Name	P/N	Name	Group	ID		Indiv.	Set		
201704-01	1704 Modification	-	D5375310	HARNESS:PAPE R FEED UNIT:CO NNECTING:ASS'	D7465310	HARNESS:PAPE R FEED UNIT:CO NNECTING:ASS'	E5(1/1)		1	O/O			Paper Feed Unit PB3130:
201604-01	1604 Modification	-	D5375330	HARNESS:PAPE R SIZE SENSOR: ASS'Y	D7465330	HARNESS:PAPE R SIZE SENSOR: ASS'Y	C8(1/1)		1	O/O			Paper Feed Unit PB3130:
201310-01	1310 Modification	-	D5375340	HARNESS:LIFT MOTOR:ASS'Y	D7465340	HARNESS:LIFT MOTOR:ASS'Y	P to P E8 (1 /1)		1	O/O			Paper Feed Unit PB3130:
201512-01	1512 Modification	-	D7465370	HARNESS:HEAT ER:CONNECTIN G:ASS'Y	B8015320	HARNESS - HEA TER	C2(1/1)		1	X/O			Paper Feed Unit PB3130:

