

LCIT PB3140

(D581)

Parts Catalog

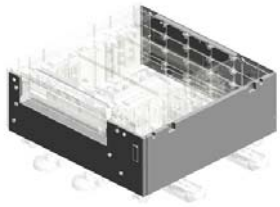
Parts change information sample

 **Add**

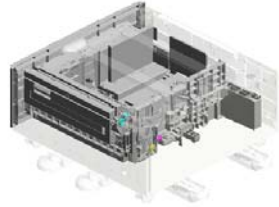
 **Update**

 **Delete**

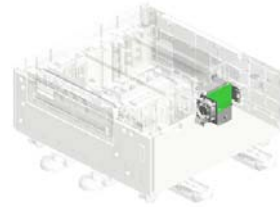
Unit All



U001
EXTERIOR



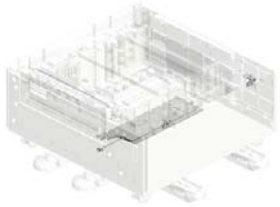
U002
PAPER FEED



U003
ELECTRICAL



U004
MAIN FRAME

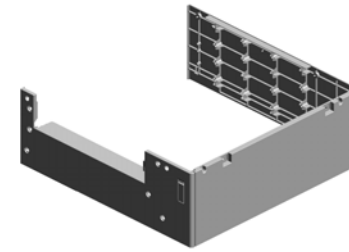


U005
ACCESSORIES

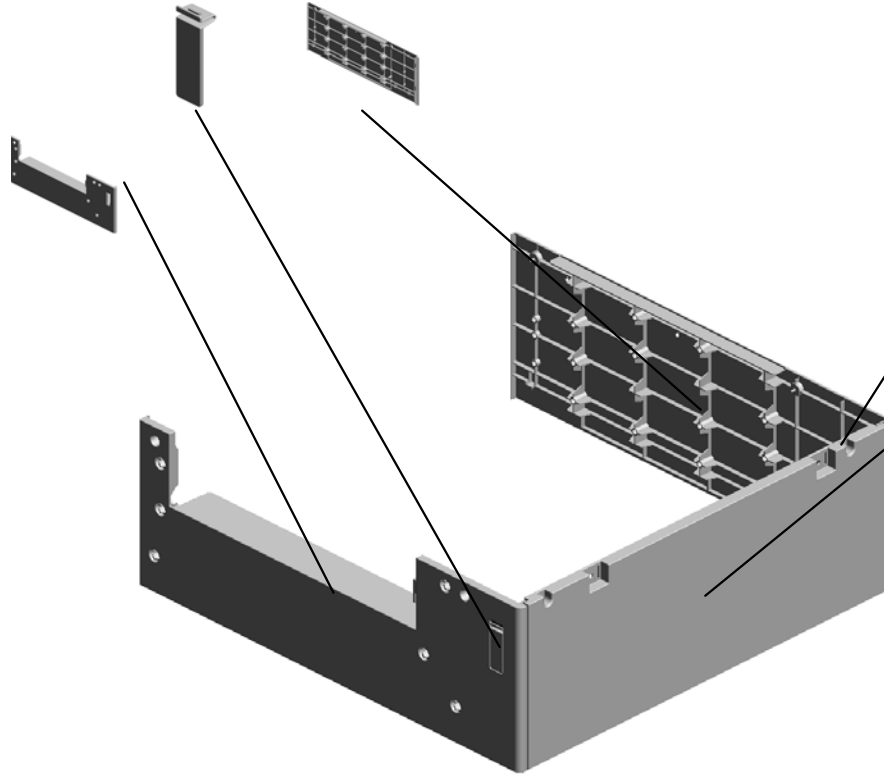
U001 EXTERIOR

4.D5802564
COVER:CONNECT
OR:LCT

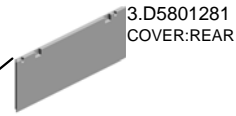
2.D5801260
COVER:LEFT



5.D5811272
COVER:RIGHT



1.04513008N
(x6)
TAPPING SCREW -
M3X8



3.D5801281
COVER:REAR

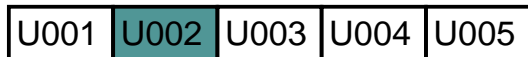
U002.PAPER FEED

U002_S001
D5812523
PAPER FEED UNIT:ASS'Y

U002_S002
D5812610
TANDEM LCT:RIGHT:ASS'Y

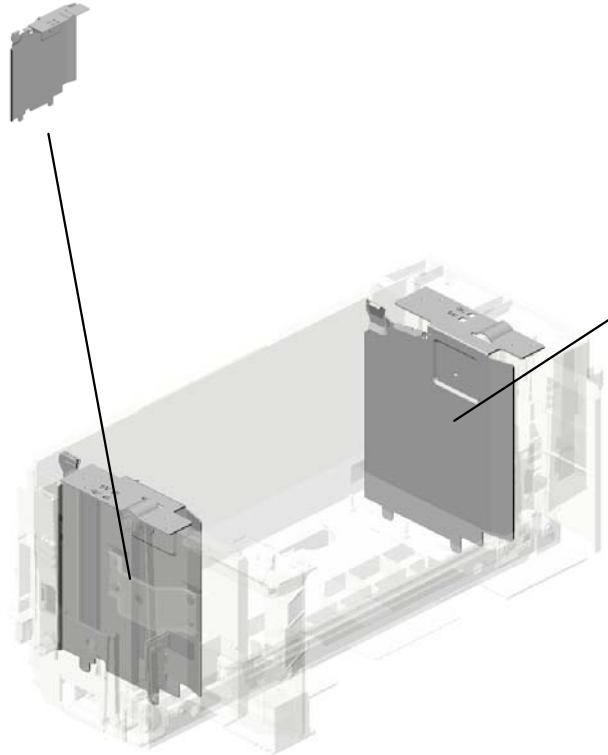
U002_S003
D5812742
COVER:TIMING BELT:TANDE
M TRAY

U002_S004
D5812753
SIDE FENCE:LEFT REAR



U002_S002.TANDEM LCT:RIGHT:ASS'Y

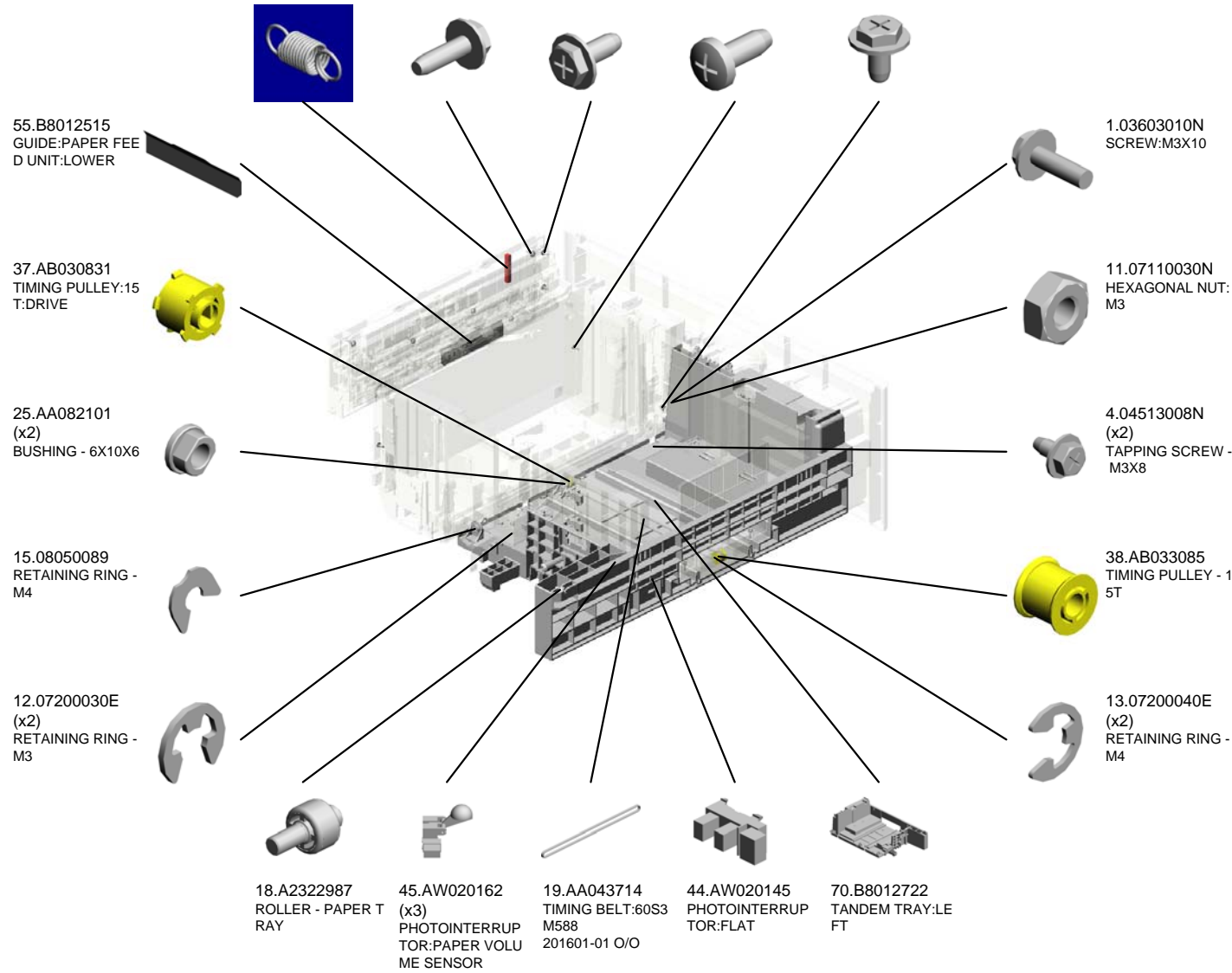
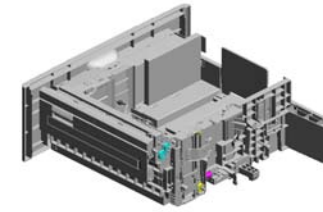
U002_S002_S002
D5812690
SIDE FENCE:RIGHT REAR:A
SS'Y



U002_S002_S001
B8012695
SIDE FENCE ASS'Y - RIGHT
FRONT

U002 PAPER FEED

- 24.AA062347 SPRING - VERTICAL TRANSPORT LEVER
- 2.04503010N (x17) TAPPING SCREW - M3X10
- 8.04543008Q (x2) TAPPING SCREW: 3X8
- 6.04523008N (x2) TAPPING SCREW - M3X8
- 7.04543006Q (x2) TAPPING SCREW - M3X6



U002 PAPER FEED

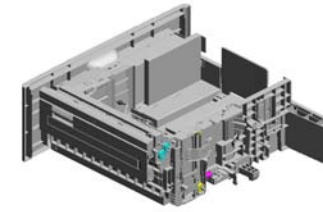
93.D0092573
(x3)
PULLEY - VERTICAL TRANSPORT

94.D0092574
(x3)
PULLEY - IDLER

92.D0092571
HOLDER - VERTICAL TRANSPORT

95.D0092575
SHAFT - IDLER

87.B8012811
GROUND PLATE - COVER TIMING BELT



74.B8012733
SHAFT:SLIDER DRIVE:PRESS FIT

82.B8012762
LEVER LOCK BRACKET

83.B8012763
LOCK LEVER SHAFT

84.B8012764
COUPLING LEVER

85.B8012765
(x2)
LEVER CAP

80.B8012756
PAPER VOLUME SENSOR BRACKET

79.B8012748
COVER POSITIONING SENSOR

76.B8012744
BACK FENCE SLIDER

78.B8012746
TIMING BELT SLIDER STOPPER

75.B8012735
TIMING BELT BRACKET

72.B8012727
TRAY COVER PLATE - RIGHT

71.B8012726
TRAY PLATE - RIGHT

73.B8012728
TRAY PLATE BRACKET - RIGHT

81.B8012758
SIDE FENCE - LEFT FRONT

77.B8012745
BACK FENCE

U002 PAPER FEED

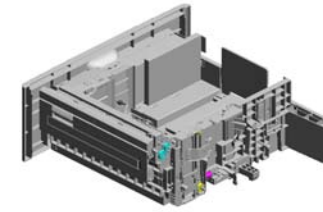
98.D0292677
(x3)
TRANSPORT BELT
:DRIVEN:VERTICAL
TRANSPORT

120.D5812562
COVER:VERTICAL
TRANSPORT

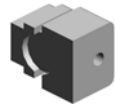
137.G8322582
SHAFT

106.D3522565
GUIDE:VERTICAL
TRANSPORT:UPPER

96.D0092576
SHAFT - VERTICAL
TRANSPORT



128.G0602652
(x2)
BUSHING - M4



113.D5802555
COVER:TRANSPORT:GUIDE



109.D3522586
HOOK:REAR:VERTICAL
TRANSPORT



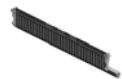
136.G8322570
GROUND PLATE



107.D3522566
GUIDE:VERTICAL
TRANSPORT:LOWER



105.D1292836
GUIDE PLATE:SWITCH
VEL:ASS'Y
201203-02 X/X



111.D3522816
GROUND PLATE:JOINT:DRIVE



119.D5812557
LEVER:OPEN AND
CLOSE:VERTICAL
TRANSPORT



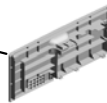
108.D3522585
HOOK:FRONT:VERTICAL
TRANSPORT



114.D5802870
GRIP:PAPER TRAY



126.D5812793
COVER:FRONT:LARGE
CAPACITY TRAY



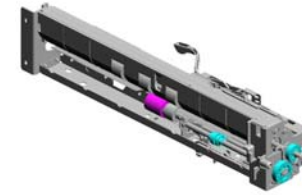
127.D5812795
SHEET:PAPER SET
DIRECTION:TANDEM
TRAY



135.G5692761
(x2)
RIVET - 31J5



U002_S001 PAPER FEED UNIT:ASS'Y



115.D5812523
[A]
PAPER FEED UNIT
:ASS'Y
201203-01 X/X

34.AB011218 GEAR - ROLLER C LUTCH
29.AA082150 PLAIN SHAFT BEARING RING:M6
35.AB011252 GEAR - 20Z
39.AF030085 PAPER FEED ROLLER - PICKUP
9.04563008N TAPPING SCREW - M3X8

13.07200040E
RETAINING RING - M4



28.AA082143
BUSHING - 6X10X6



3.04513006N
(x7)
TAPPING SCREW - 3X6



30.AA100014
(x2)
RETAINING RING C - SEPARATE



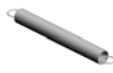
15.08050089
(x4)
RETAINING RING - M4



40.AF031085
PAPER FEED ROLLER - FEED



22.AA060693
TENSION SPRING



26.AA082102
(x3)
BUSHING - 6X10X6



32.AB010156
GEAR:SEPARATE: DRIVE



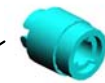
17.52062686
(x2)
SNAP RING



16.11050511
(x2)
HARNES CLAMP - LWS-0306ZC



33.AB010157
GEAR:SEPARATE: DRIVEN



21.AA060691
TENSION SPRING



23.AA062259
SPRING - RELEASE

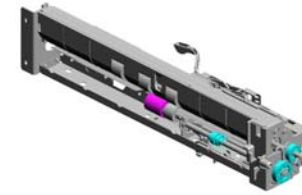


7.04543006Q
(x4)
TAPPING SCREW - M3X6



U001 U002 U003 U004 U005

U002_S001 PAPER FEED UNIT:ASS'Y



115.D5812523
[A]
PAPER FEED UNIT
:ASS'Y
201203-01 X/X

49.B2232772 HARNESS SHEET
50.B2232776 STAY
42.AW010122 PAPER FEED SENSOR
102.D0892781 BRACKET:SENSOR
48.B2232765 GROUND PLATE - FEED

52.B2232786 GROUND PLATE - FRONT

101.D0892778 BRACKET:SENSOR:FEED

43.AW010128 PAPER FEED SENSOR

97.D0092757 TRANSPORT ROLLER:DRIVE:ASS'Y

41.AF032085 PAPER FEED ROLLER - SEPARATE

46.B0042783 TORQUE LIMITER

53.B2232810 SEPARATE DRIVE SHAFT

47.B2232762 FEED SHAFT

54.B2232815 SEPARATE DRIVE SHAFT

103.D0892819 GEAR:SEPARATOR:INPUT

88.B8012822 BRACKET - PAPER END SENSOR

51.B2232780 DC SOLENOID 24V

99.D0892761 ARM:PICKUP

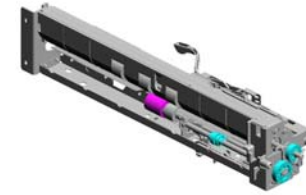
44.AW020145 (x2) PHOTOINTERRUPTOR:FLAT

100.D0892764 GEAR:FEED

U002_S001
PAPER FEED UNIT:ASS'Y

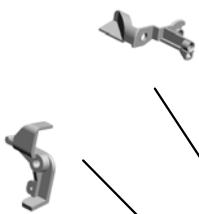
104.D0892829
GUIDE:FEED

112.D5382821
FEELER:PAPER END



115.D5812523
[A]
PAPER FEED UNIT
:ASS'Y
201203-01 X/X

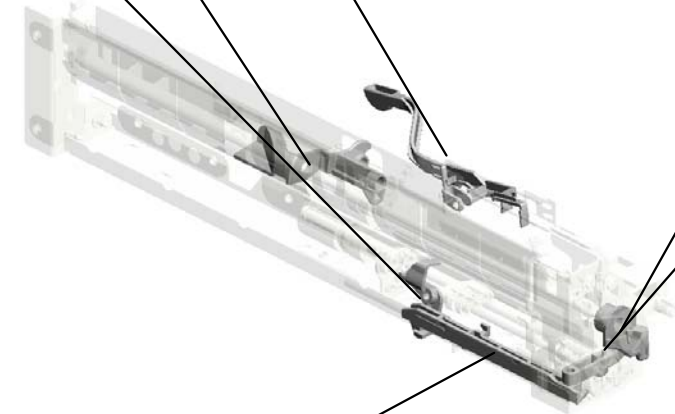
130.G0652774
PRESSURE LEVER



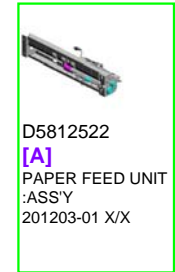
129.G0652767
LEVER - FEED



132.G0652776
RELEASE LEVER

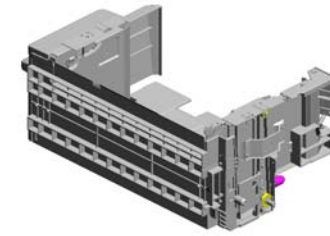


131.G0652775
LINK LEVER



D5812522
[A]
PAPER FEED UNIT
:ASS'Y
201203-01 X/X

U002_S002
TANDEM LCT:RIGHT:ASS'Y



121.D5812610
TANDEM LCT:RIGH
T:ASS'Y

- 12.07200030E (x2) RETAINING RING - M3
- 61.B8012654 LOCK LEVER
- 60.B8012653 BASE COUPLING BRACKET
- 57.B8012649 TRAY STAY SHAFT - RIGHT
- 63.B8012665 END FENCE

14.07200060E (x4) RETAINING RING - M6

4.04513008N (x2) TAPPING SCREW - M3X8

56.B8012638 SUPPORTING PLATE:SIDE PLATE:LARGE CAPACITY TRAY

7.04543006Q (x8) TAPPING SCREW - M3X6

31.AA143823 TAPPING SCREW

59.B8012652 COUPLING BRACKET SHEET

62.B8012657 TANDEM TRAY STAY - RIGHT

27.AA082104 (x2) BUSHING - 8X12X7

10.06230140E (x2) SPRING PIN - 3X14 MM

36.AB030633 (x2) TIMING PULLEY - TRAY BOTTOM PLATE

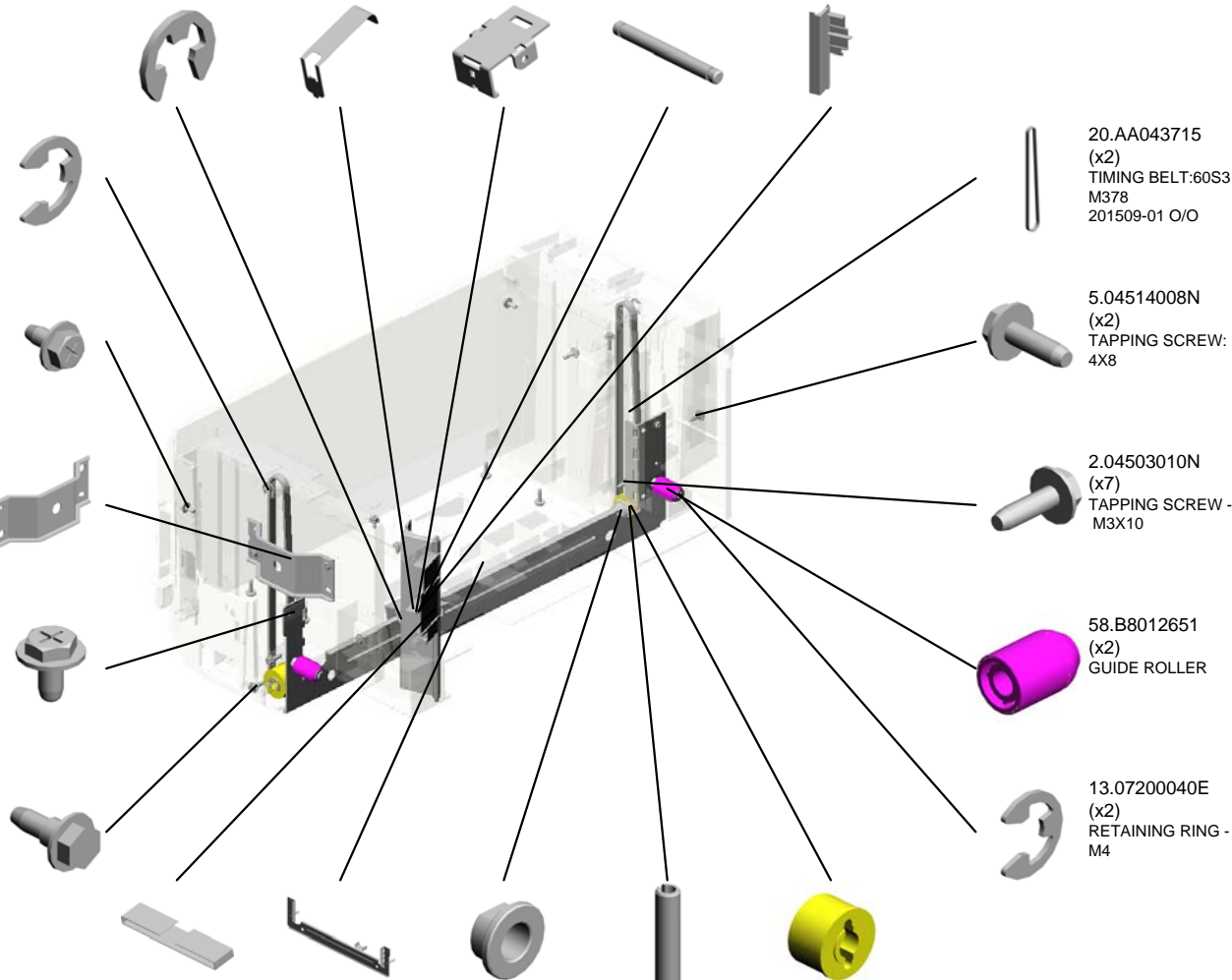
20.AA043715 (x2) TIMING BELT:60S3 M378 201509-01 O/O

5.04514008N (x2) TAPPING SCREW: 4X8

2.04503010N (x7) TAPPING SCREW - M3X10

58.B8012651 (x2) GUIDE ROLLER

13.07200040E (x2) RETAINING RING - M4



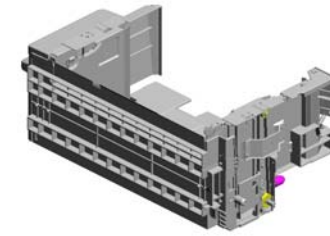
U002_S002
TANDEM LCT:RIGHT:ASS'Y

116.D5812528
DECAL:PAPER SE
T DIRECTION:TAN
DEM TRAY:RIGHT

67.B8012680
INNER COVER GRI
P - RIGHT

133.G5692710
(x2)
TIMING PULLEY - T
RAY BOTTOM PLA
TE

122.D5812681
DECAL:GRIP:INNE
R COVER:RIGHT

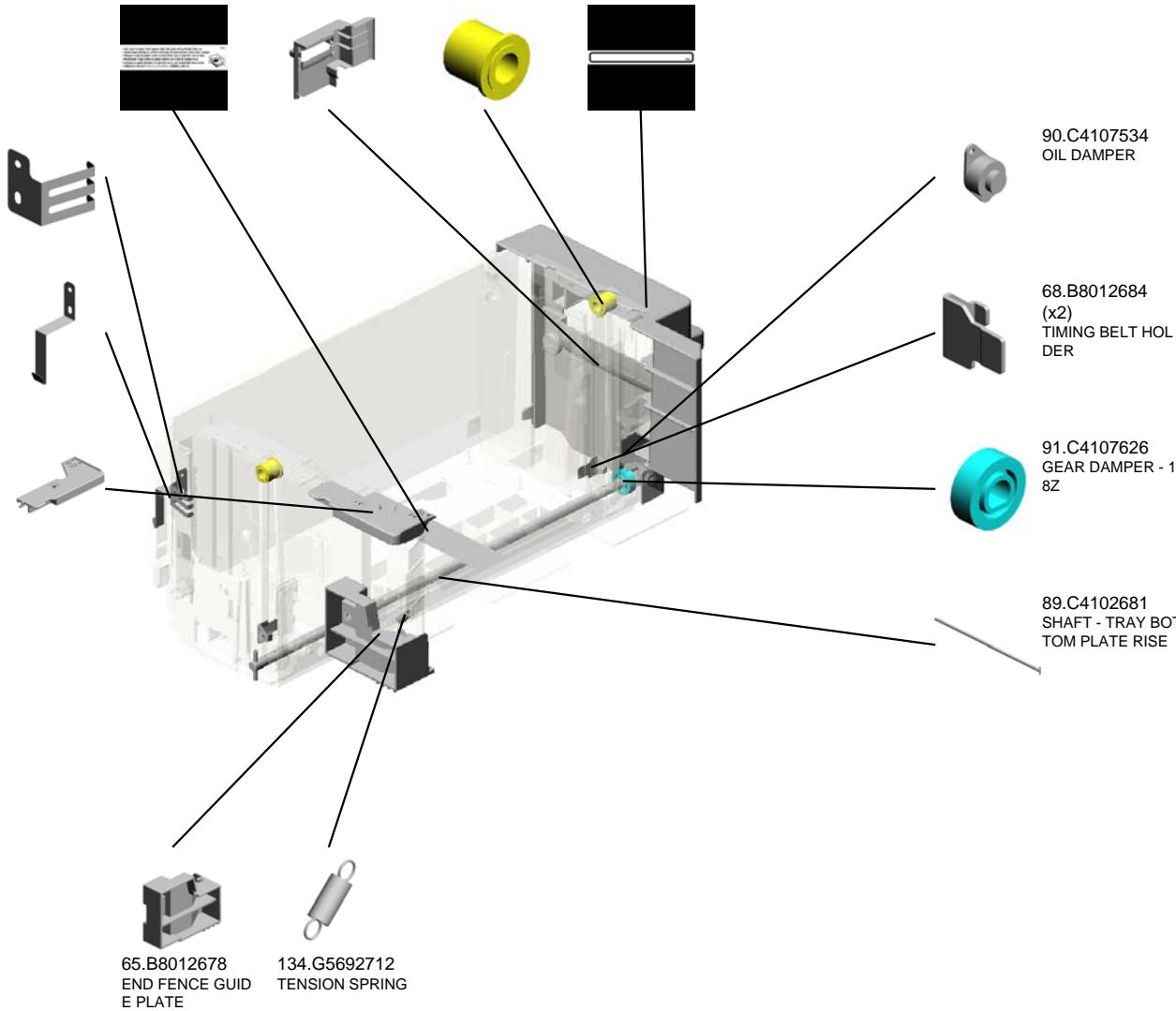


121.D5812610
TANDEM LCT:RIGH
T:ASS'Y

66.B8012679
TRAY GROUND PL
ATE - RIGHT

110.D3522686
GROUND PLATE:T
RAY:RIGHT

64.B8012677
END FENCE BRAC
KET



90.C4107534
OIL DAMPER

68.B8012684
(x2)
TIMING BELT HOL
DER

91.C4107626
GEAR DAMPER - 1
8Z

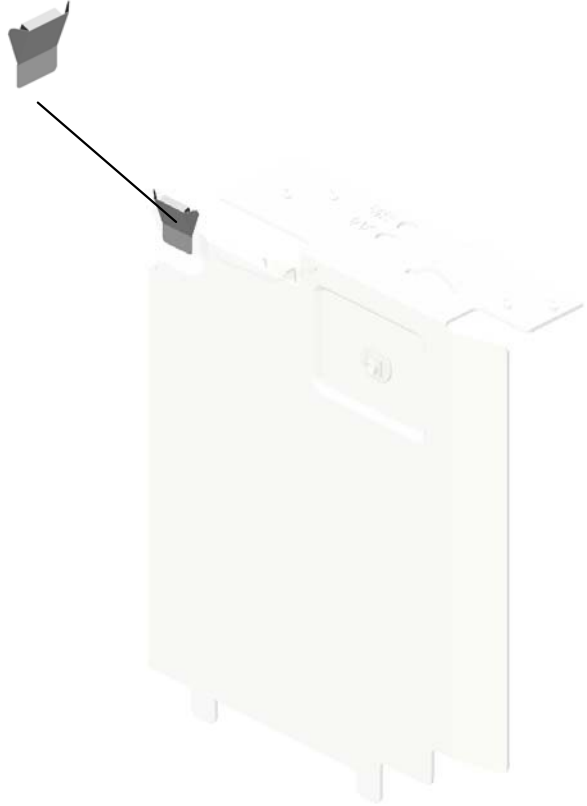
89.C4102681
SHAFT - TRAY BOT
TOM PLATE RISE

65.B8012678
END FENCE GUID
E PLATE

134.G5692712
TENSION SPRING

U002_S002_S001
SIDE FENCE ASS'Y - RIGHT FRONT

86.B8012801
PAPER PLATE



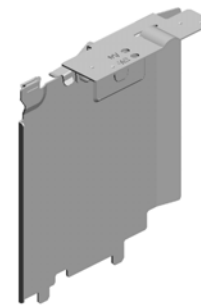
69.B8012695
SIDE FENCE ASS'Y
- RIGHT FRONT

U002_S002_S002
SIDE FENCE:RIGHT REAR:ASS'Y

86.B8012801
PAPER PLATE



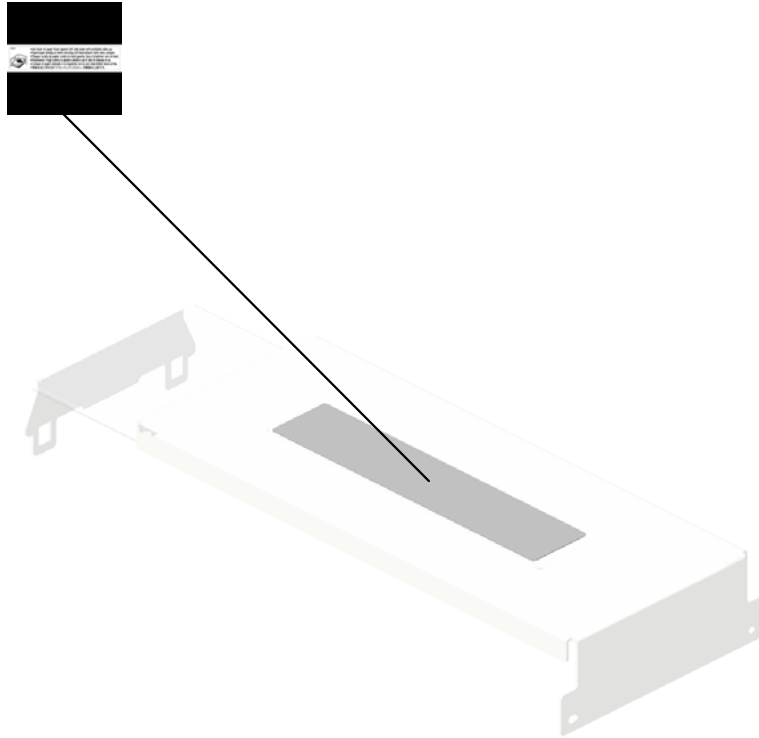
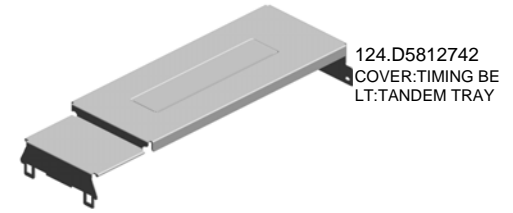
118.D5812534
DECAL:SIDE FENC
E:REAR



123.D5812690
SIDE FENCE:RIGH
T REAR:ASS'Y

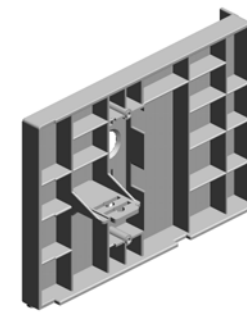
U002_S003
COVER:TIMING BELT:TANDEM TRAY

117.D5812529
DECAL:PAPER SE
T DIRECTION:TAN
DEM TRAY:LEFT



U002_S004
SIDE FENCE:LEFT REAR

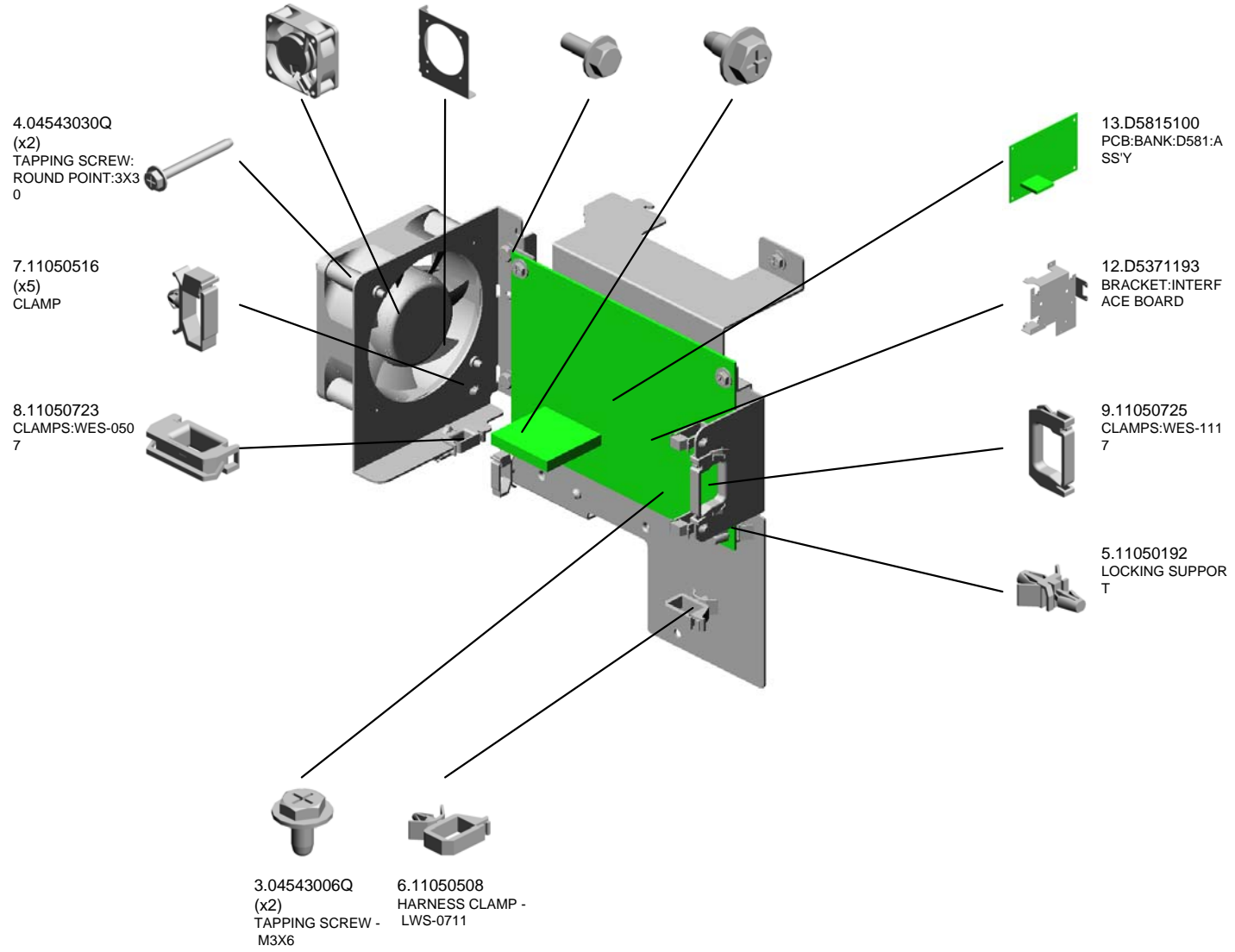
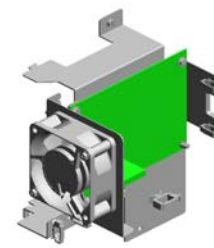
118.D5812534
DECAL:SIDE FENC
E:REAR



125.D5812753
SIDE FENCE:LEFT
REAR

U003 ELECTRICAL

- 10.AX640170 FAN MOTOR - MM60 DC24V
- 11.D5371161 BRACKET:DC FAN MOTOR
- 1.03603008N (x2) SCREW:M3X8
- 2.04513006N (x3) TAPPING SCREW - 3X6



U004 MAIN FRAME



- 5.04513008N (x2) TAPPING SCREW - M3X8
- 14.11050516 (x6) CLAMP
- 19.AA043992 TIMING BELT:40S3 M129
- 1.03140100N (x2) PAN HEAD SCREW :M4X10
- 13.08050088 (x2) RETAINING RING - M6

16.A2322987
ROLLER - PAPER T
RAY

10.04544008Q
(x24)
TAPPING SCREW -
M4X8

3.03603006N
(x6)
SCREW - M3X6

2.03540050N
(x2)
SCREW - M4X5

9.04543006Q
(x72)
TAPPING SCREW -
M3X6

11.07200040E
(x8)
RETAINING RING -
M4

20.AA070073
SLIDE RAIL - RIGH
T

12.07200060E
(x3)
RETAINING RING -
M6

17.AA043318
TIMING BELT - 40S
3M144

8.04533006N
(x2)
TAPPING SCREW -
M3X6

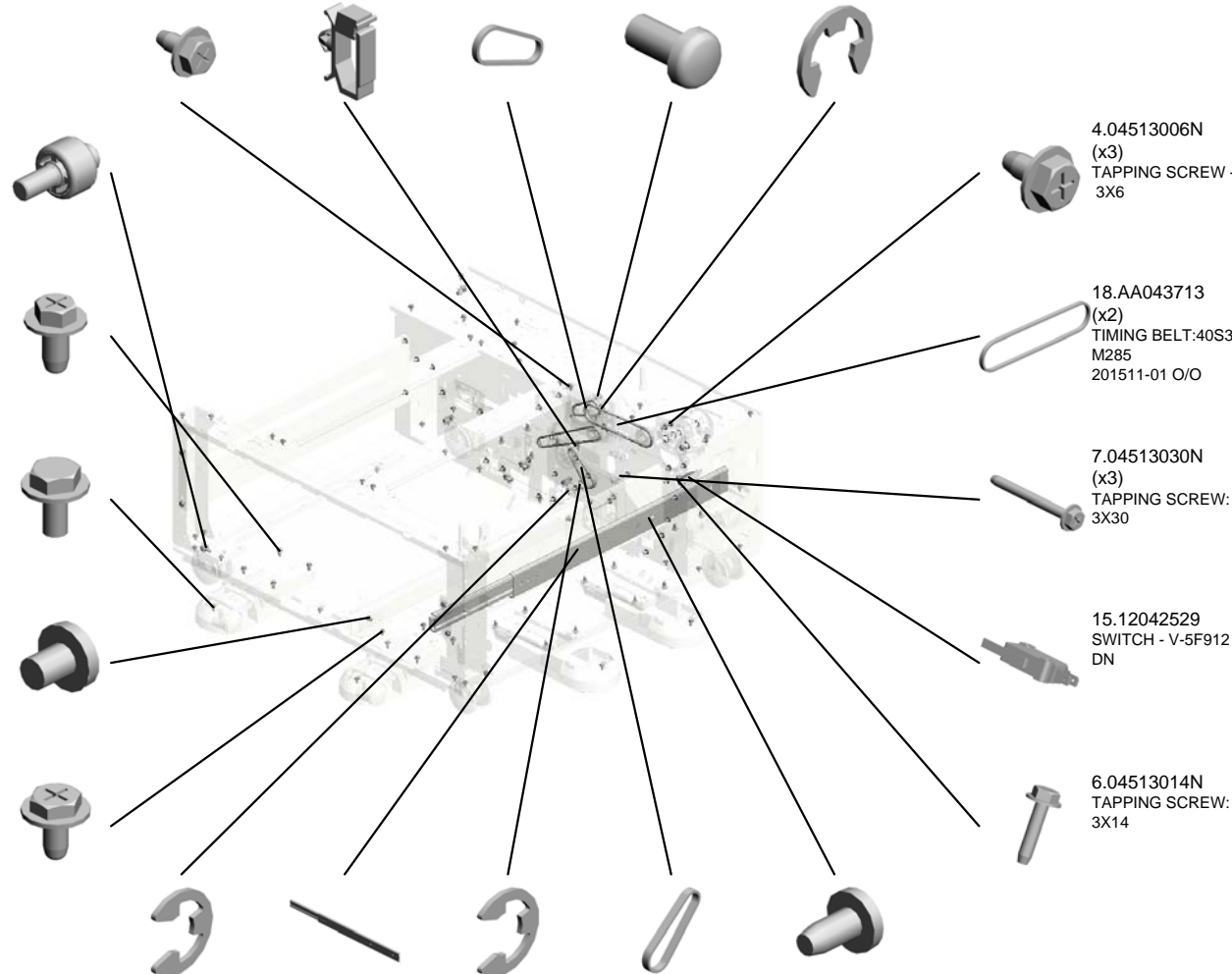
4.04513006N
(x3)
TAPPING SCREW -
3X6

18.AA043713
(x2)
TIMING BELT:40S3
M285
201511-01 O/O

7.04513030N
(x3)
TAPPING SCREW:
3X30

15.12042529
SWITCH - V-5F912
DN

6.04513014N
TAPPING SCREW:
3X14



U004 MAIN FRAME



27.AA161174 CUSHION:DC STEPPER MOTOR
 34.AB017833 GEAR:PULLEY:Z21 T22
 37.AB030843 TIMING PULLEY:T2 7
 40.B1544521 STEPPER MOTOR: MM56:ASSY
 30.AB017704 GEAR/PULLEY - 30 Z/27T

25.AA100014 (x2) RETAINING RING C - SEPARATE

39.AX200289 (x2) MAGNETIC CLUTCH H - 32Z

36.AB030787 TIMING PULLEY - 1 5T

32.AB017709 GEAR/PULLEY - 46 Z/15T

21.AA070074 SLIDE RAIL - MIDDLE

26.AA161163 CUSHION

24.AA082104 BUSHING - 8X12X7

35.AB030786 TIMING PULLEY - 2 2T

22.AA082101 (x6) BUSHING - 6X10X6

38.AW500023 (x2) PUSH SWITCH

23.AA082102 BUSHING - 6X10X6

28.AB011259 GEAR - 32Z

31.AB017708 GEAR - 43Z

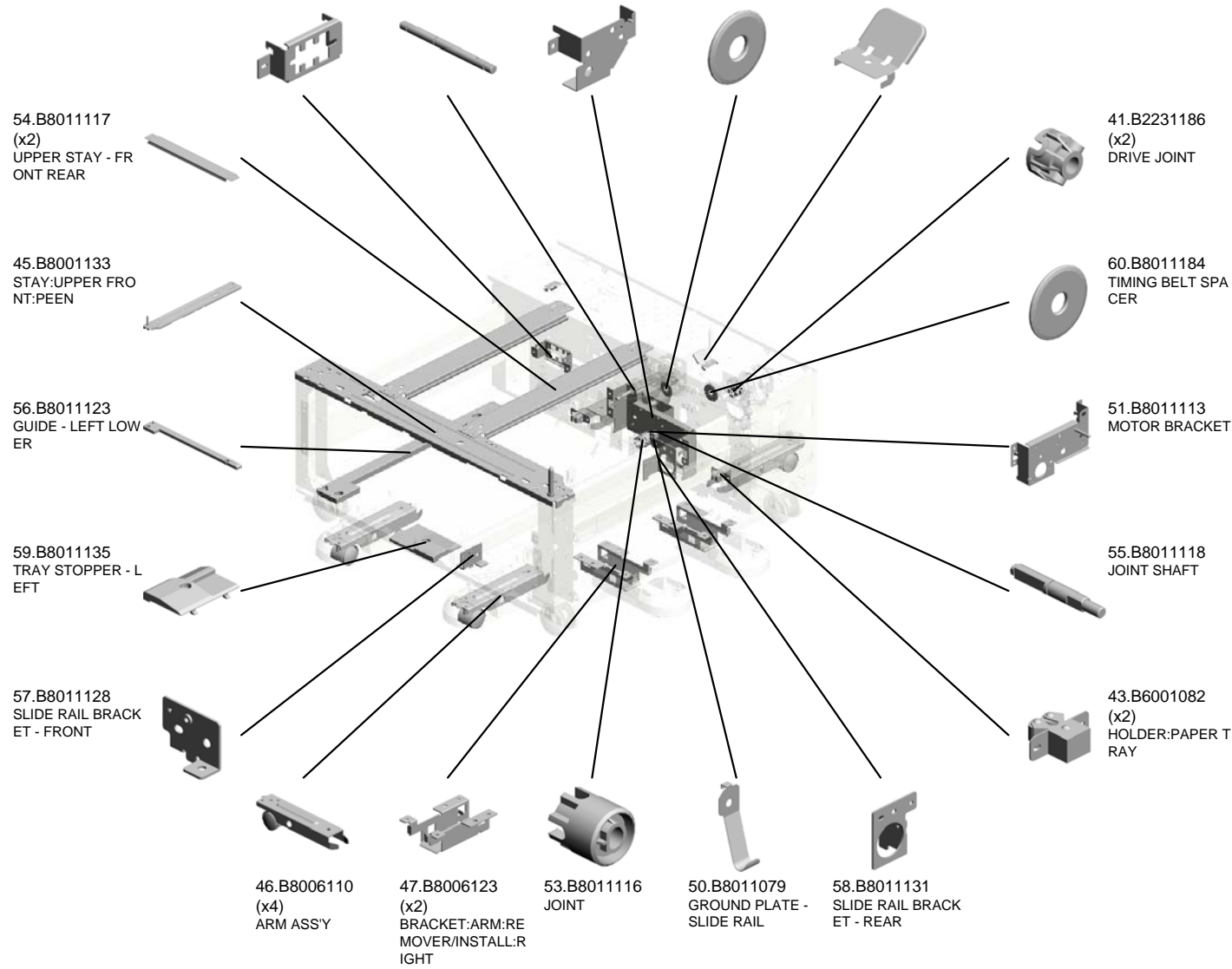
33.AB017832 GEAR:Z28/T28

29.AB011500 (x2) GEAR - 27Z

U004 MAIN FRAME



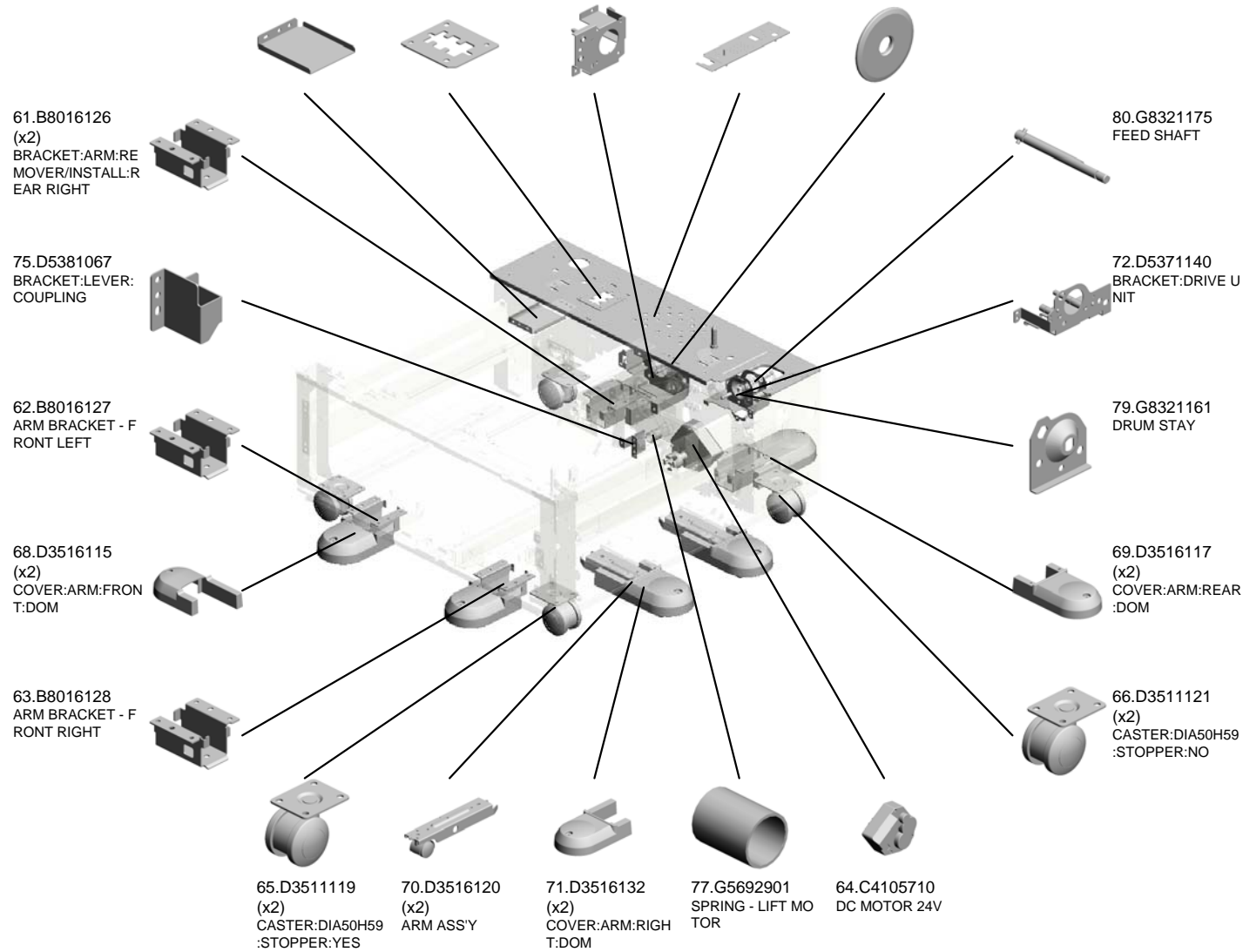
- 44.B6001085 BRACKET:DRAWER:ARABIA
- 48.B8011077 JOINT:DRIVE SHAFT
- 52.B8011115 JOINT BRACKET
- 49.B8011078 TIMING BELT SPACER
- 42.B3841146 (x2) SPRING PLATE



U004 MAIN FRAME



76.D5381068 BRACKET:COVER:HEATER:HARNESS
 78.G8321146 CONNECTOR BRACKET
 73.D5371180 BRACKET:DC STEPPER MOTOR
 67.D3511143 STAY:UPPER REAR
 74.D5371327 SPACER:TIMING BELT

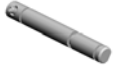


U004 MAIN FRAME

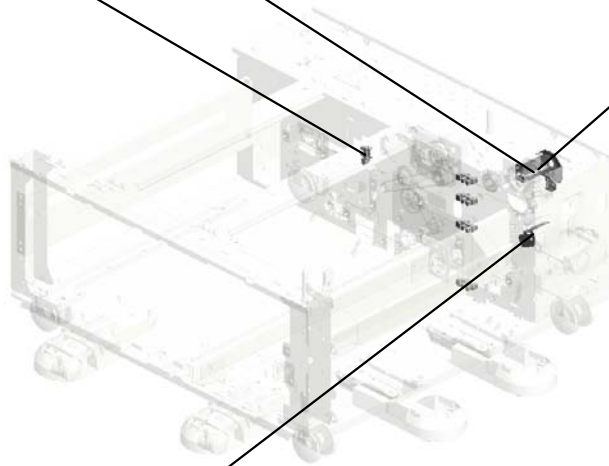
81.G8321178
GRIP SHAFT



84.GW020020
(x5)
PHOTOINTERRUP
TOR:LG248NL1



83.G8323619
MAGNETIC CLUTC
H BRACKET



82.G8321183
MICRO SWITCH B
RACKET



Exclusive Parts

Number	Part Name	Group	ID
52062686	SNAP RING	U002_S001	17
A2322987	ROLLER - PAPER TRAY	U002	18
		U004	16
AA043318	TIMING BELT - 40S3M144	U004	17
AA043713	TIMING BELT:40S3M285	U004	18
AA043714	TIMING BELT:60S3M588	U002	19
AA043715	TIMING BELT:60S3M378	U002_S002	20
AA043992	TIMING BELT:40S3M129	U004	19
AA060691	TENSION SPRING	U002_S001	21
AA060693	TENSION SPRING	U002_S001	22
AA062259	SPRING - RELEASE	U002_S001	23
AA062347	SPRING - VERTICAL TRANSPORT LEVER	U002	24
AA070073	SLIDE RAIL - RIGHT	U004	20
AA070074	SLIDE RAIL - MIDDLE	U004	21
AA082101	BUSHING - 6X10X6	U002	25
		U004	22
AA082102	BUSHING - 6X10X6	U002_S001	26
		U004	23
AA082104	BUSHING - 8X12X7	U002_S002	27
		U004	24
AA082143	BUSHING - 6X10X6	U002_S001	28
AA082150	PLAIN SHAFT BEARING:M6	U002_S001	29
AA100014	RETAINING RING C - SEPARATE	U002_S001	30
		U004	25
AA143823	TAPPING SCREW	U002_S002	31
AA161163	CUSHION	U004	26
AA161174	CUSHION:DC STEPPER MOTOR	U004	27
AB010156	GEAR:SEPARATE:DRIVE	U002_S001	32
AB010157	GEAR:SEPARATE:DRIVEN	U002_S001	33
AB011218	GEAR - ROLLER CLUTCH	U002_S001	34
AB011252	GEAR - 20Z	U002_S001	35
AB011259	GEAR - 32Z	U004	28
AB011500	GEAR - 27Z	U004	29
AB017704	GEAR/PULLEY - 30Z/27T	U004	30
AB017708	GEAR - 43Z	U004	31
AB017709	GEAR/PULLEY - 46Z/15T	U004	32
AB017832	GEAR:Z28/T28	U004	33

Number	Part Name	Group	ID
AB017833	GEAR:PULLEY:Z21T22	U004	34
AB030633	TIMING PULLEY - TRAY BOTTOM PLATE	U002_S002	36
AB030786	TIMING PULLEY - 22T	U004	35
AB030787	TIMING PULLEY - 15T	U004	36
AB030831	TIMING PULLEY:15T:DRIVE	U002	37
AB030843	TIMING PULLEY:T27	U004	37
AB033085	TIMING PULLEY - 15T	U002	38
AF030085	PAPER FEED ROLLER - PICKUP	U002_S001	39
AF031085	PAPER FEED ROLLER - FEED	U002_S001	40
AF032085	PAPER FEED ROLLER - SEPARATE	U002_S001	41
AW010122	PAPER FEED SENSOR	U002_S001	42
AW010128	PAPER FEED SENSOR	U002_S001	43
AW020145	PHOTOINTERRUPTOR:FLAT	U002	44
		U002_S001	44
AW020162	PHOTOINTERRUPTOR:PAPER VOLUME SENSOR	U002	45
AW500023	PUSH SWITCH	U004	38
AX200289	MAGNETIC CLUTCH - 32Z	U004	39
AX640170	FAN MOTOR - MM60 DC24V	U003	10
B0042783	TORQUE LIMITER	U002_S001	46
B1544521	STEPPER MOTOR:MM56:ASSY	U004	40
B2231186	DRIVE JOINT	U004	41
B2232762	FEED SHAFT	U002_S001	47
B2232765	GROUND PLATE - FEED	U002_S001	48
B2232772	HARNESS SHEET	U002_S001	49
B2232776	STAY	U002_S001	50
B2232780	DC SOLENOID 24V	U002_S001	51
B2232786	GROUND PLATE - FRONT	U002_S001	52
B2232810	SEPARATE DRIVEN SHAFT	U002_S001	53
B2232815	SEPARATE DRIVE SHAFT	U002_S001	54
B3841146	SPRING PLATE	U004	42
B6001082	HOLDER:PAPER TRAY	U004	43
B6001085	BRACKET:DRAWER:ARABIA	U004	44
B8001133	STAY:UPPER FRONT:PEEN	U004	45
B8006110	ARM ASSY	U004	46
B8006123	BRACKET:ARM:REMOVER/INSTALL	U004	47

Exclusive Parts

Number	Part Name	Group	ID
	L:RIGHT		
B8011077	JOINT:DRIVE SHAFT	U004	48
B8011078	TIMING BELT SPACER	U004	49
B8011079	GROUND PLATE - SLIDE RAIL	U004	50
B8011113	MOTOR BRACKET	U004	51
B8011115	JOINT BRACKET	U004	52
B8011116	JOINT	U004	53
B8011117	UPPER STAY - FRONT REAR	U004	54
B8011118	JOINT SHAFT	U004	55
B8011123	GUIDE - LEFT LOWER	U004	56
B8011128	SLIDE RAIL BRACKET - FRONT	U004	57
B8011131	SLIDE RAIL BRACKET - REAR	U004	58
B8011135	TRAY STOPPER - LEFT	U004	59
B8011171	HEAT SINK:HEATER:NA:ASS'Y	U005	2
B8011173	HEAT SINK:HEATER:EU:ASS'Y	U005	3
B8011184	TIMING BELT SPACER	U004	60
B8012515	GUIDE:PAPER FEED UNIT:LOWER	U002	55
B8012638	SUPPORTING PLATE:SIDE PLATE: LARGE CAPACITY TRAY	U002_S002	56
B8012649	TRAY STAY SHAFT - RIGHT	U002_S002	57
B8012651	GUIDE ROLLER	U002_S002	58
B8012652	COUPLING BRACKET SHEET	U002_S002	59
B8012653	BASE COUPLING BRACKET	U002_S002	60
B8012654	LOCK LEVER	U002_S002	61
B8012657	TANDEM TRAY STAY - RIGHT	U002_S002	62
B8012665	END FENCE	U002_S002	63
B8012677	END FENCE BRACKET	U002_S002	64
B8012678	END FENCE GUIDE PLATE	U002_S002	65
B8012679	TRAY GROUND PLATE - RIGHT	U002_S002	66
B8012680	INNER COVER GRIP - RIGHT	U002_S002	67
B8012684	TIMING BELT HOLDER	U002_S002	68
B8012695	SIDE FENCE ASS'Y - RIGHT FRON T	U002_S002_S001	69
B8012722	TANDEM TRAY:LEFT	U002	70
B8012726	TRAY PLATE - RIGHT	U002	71
B8012727	TRAY COVER PLATE- RIGHT	U002	72
B8012728	TRAY PLATE BRACKET - RIGHT	U002	73
B8012733	SHAFT:SLIDER:DRIVE:PRESS FIT	U002	74

Number	Part Name	Group	ID
B8012735	TIMING BELT BRACKET	U002	75
B8012744	BACK FENCE SLIDER	U002	76
B8012745	BACK FENCE	U002	77
B8012746	TIMING BELT SLIDER STOPPER	U002	78
B8012748	COVER:POSITIONING SENSOR	U002	79
B8012756	PAPER VOLUME SENSOR BRACK ET	U002	80
B8012758	SIDE FENCE - LEFT FRONT	U002	81
B8012762	LEVER LOCK BRACKET	U002	82
B8012763	LOCK LEVER SHAFT	U002	83
B8012764	COUPLING LEVER	U002	84
B8012765	LEVER CAP	U002	85
B8012801	PAPER PLATE	U002_S002_S001	86
		U002_S002_S002	86
B8012811	GROUND PLATE - COVER TIMING BELT	U002	87
B8012822	BRACKET - PAPER END SENSOR	U002_S001	88
B8016126	BRACKET:ARM:REMOVER/INSTAL L:REAR RIGHT	U004	61
B8016127	ARM BRACKET - FRONT LEFT	U004	62
B8016128	ARM BRACKET - FRONT RIGHT	U004	63
C4102681	SHAFT - TRAY BOTTOM PLATE RI SE	U002_S002	89
C4105710	DC MOTOR 24V	U004	64
C4107534	OIL DAMPER	U002_S002	90
C4107626	GEAR DAMPER - 18Z	U002_S002	91
D0092571	HOLDER - VERTICAL TRANSPORT	U002	92
D0092573	PULLEY - VERTICAL TRANSPORT	U002	93
D0092574	PULLEY - IDLER	U002	94
D0092575	SHAFT - IDLER	U002	95
D0092576	SHAFT - VERTICAL TRANSPORT	U002	96
D0092757	TRANSPORT ROLLER:DRIVE:ASS' Y	U002_S001	97
D0292677	TRANSPORT BELT:DRIVEN:VERTI CAL TRANSPORT	U002	98
D0892761	ARM:PICKUP	U002_S001	99
D0892764	GEAR:FEED	U002_S001	100
D0892778	BRACKET:SENSOR:FEED	U002_S001	101

Exclusive Parts

Number	Part Name	Group	ID
D0892781	BRACKET:SENSOR	U002_S001	102
D0892819	GEAR:SEPARATOR:INPUT	U002_S001	103
D0892829	GUIDE:FEED	U002_S001	104
D1292836	GUIDE PLATE:SWIVEL:ASS'Y	U002	105
D3511119	CASTER:DIA50H59:STOPPER:YES	U004	65
D3511121	CASTER:DIA50H59:STOPPER:NO	U004	66
D3511143	STAY:UPPER REAR	U004	67
D3516115	COVER:ARM:FRONT:DOM	U004	68
D3516117	COVER:ARM:REAR:DOM	U004	69
D3516120	ARM ASS'Y	U004	70
D3516132	COVER:ARM:RIGHT:DOM	U004	71
D3522565	GUIDE:VERTICAL TRANSPORT:UPPER	U002	106
D3522566	GUIDE:VERTICAL TRANSPORT:LOWER	U002	107
D3522585	HOOK:FRONT:VERTICAL TRANSPORT	U002	108
D3522586	HOOK:REAR:VERTICAL TRANSPORT	U002	109
D3522686	GROUND PLATE:TRAY:RIGHT	U002_S002	110
D3522816	GROUND PLATE:JOINT:DRIVE	U002	111
D5371140	BRACKET:DRIVE UNIT	U004	72
D5371161	BRACKET:DC FAN MOTOR	U003	11
D5371180	BRACKET:DC STEPPER MOTOR	U004	73
D5371193	BRACKET:INTERFACE BOARD	U003	12
D5371327	SPACER:TIMING BELT	U004	74
D5381067	BRACKET:LEVER:COUPLING	U004	75
D5381068	BRACKET:COVER:HEATER:HARNESSES	U004	76
D5382821	FEELER:PAPER END	U002_S001	112
D5801260	COVER:LEFT	U001	2
D5801281	COVER:REAR	U001	3
D5802555	COVER:TRANSPORT:GUIDE	U002	113
D5802564	COVER:CONNECTOR:LCT	U001	4
D5802870	GRIP:PAPER TRAY	U002	114
D5811272	COVER:RIGHT	U001	5
D5812523	PAPER FEED UNIT:ASS'Y	U002_S001	115
D5812528	DECAL:PAPER SET DIRECTION:TANDEM TRAY	U002_S002	116

Number	Part Name	Group	ID
	NDEM TRAY:RIGHT		
D5812529	DECAL:PAPER SET DIRECTION:TANDEM TRAY:LEFT	U002_S003	117
D5812534	DECAL:SIDE FENCE:REAR	U002_S002_S002	118
		U002_S004	118
D5812557	LEVER:OPEN AND CLOSE:VERTICAL TRANSPORT	U002	119
D5812562	COVER:VERTICAL TRANSPORT	U002	120
D5812610	TANDEM LCT:RIGHT:ASS'Y	U002_S002	121
D5812681	DECAL:GRIP:INNER COVER:RIGHT	U002_S002	122
D5812690	SIDE FENCE:RIGHT REAR:ASS'Y	U002_S002_S002	123
D5812742	COVER:TIMING BELT:TANDEM TRAY	U002_S003	124
D5812753	SIDE FENCE:LEFT REAR	U002_S004	125
D5812793	COVER:FRONT:LARGE CAPACITY TRAY	U002	126
D5812795	SHEET:PAPER SET DIRECTION:TANDEM TRAY	U002	127
D5815100	PCB:BANK:D581:ASS'Y	U003	13
G0602652	BUSHING - M4	U002	128
G0652767	LEVER - FEED	U002_S001	129
G0652774	PRESSURE LEVER	U002_S001	130
G0652775	LINK LEVER	U002_S001	131
G0652776	RELEASE LEVER	U002_S001	132
G5692710	TIMING PULLEY - TRAY BOTTOM PLATE	U002_S002	133
G5692712	TENSION SPRING	U002_S002	134
G5692761	RIVET - 31J5	U002	135
G5692901	SPRING - LIFT MOTOR	U004	77
G8321146	CONNECTOR BRACKET	U004	78
G8321161	DRUM STAY	U004	79
G8321175	FEED SHAFT	U004	80
G8321178	GRIP SHAFT	U004	81
G8321183	MICRO SWITCH BRACKET	U004	82
G8322570	GROUND PLATE	U002	136
G8322582	SHAFT	U002	137
G8323619	MAGNETIC CLUTCH BRACKET	U004	83

Exclusive Parts

Number	Part Name	Group	ID
G8327900	SCREW:SPRING WASHER:ROUND POINT:M4X10	U005	4
G8328510	COUPLING BRACKET	U005	5
GW020020	PHOTOINTERRUPTOR:LG248NL1	U004	84

Standard Parts



03140100N
PAN HEAD SCREW:M4X10



03540050N
SCREW - M4X5



03603006N
SCREW - M3X6



03603008N
SCREW:M3X8



03603010N
SCREW:M3X10



03604010N
SCREW:M4X10



04503010N
TAPPING SCREW - M3X10



04513006N
TAPPING SCREW - 3X6



04513008N
TAPPING SCREW - M3X8



04513014N
TAPPING SCREW:3X14



04513030N
TAPPING SCREW:3X30



04514008N
TAPPING SCREW:4X8



04523008N
TAPPING SCREW - M3X8



04533006N
TAPPING SCREW - M3X6



04543006Q
TAPPING SCREW - M3X6



04543008Q
TAPPING SCREW:3X8



04543030Q
TAPPING SCREW:ROUND P
OINT:3X30



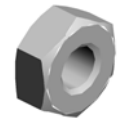
04544008Q
TAPPING SCREW - M4X8



04563008N
TAPPING SCREW - M3X8



06230140E
SPRING PIN - 3X14MM



07110030N
HEXAGONAL NUT:M3



07200030E
RETAINING RING - M3



07200040E
RETAINING RING - M4



07200060E
RETAINING RING - M6



08050088
RETAINING RING - M6



08050089
RETAINING RING - M4



11050192
LOCKING SUPPORT



11050508
HARNESS CLAMP - LWS-071
1

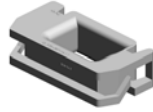
Standard Parts



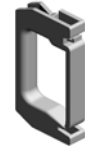
11050511
HARNESS CLAMP - LWS-030
6ZC



11050516
CLAMP



11050723
CLAMPS:WES-0507



11050725
CLAMPS:WES-1117



12042529
SWITCH - V-5F912DN

Design Change List

Number	Title	Set	Old Part		New Part		Index No.		Q'ty	Interchg		Reason	Cut-in S/N
			P/N	Name	P/N	Name	Group	ID		Indiv.	Set		
201704-01	1704 Modification	-	D5385320	HARNESS:MOTOR:ASS'Y	D7475320	HARNESS:MOTOR:ASS'Y	B8(1/1)		1	O/O			LCIT PB3140:
201601-01	1601 Modification	-	AA043599	TIMING BELT - 6 OS3M588	AA043714	TIMING BELT:60 S3M588	U002	19	1	O/O			LCIT PB3140:
201509-01	1509 Modification	-	AA043600	TIMING BELT - 6 OS3M378	AA043715	TIMING BELT:60 S3M378	U002_S002	20	2	O/O			LCIT PB3140:
201410-01	1410 Modification	-	D5385350	HARNESS:LIFT MOTOR:ASS'Y	D7475350	HARNESS:LIFT MOTOR:ASS'Y	P to P E8(1/1)		1	O/O			LCIT PB3140:
201402-01	1402 Modification	-	D5375300	HARNESS:INTERFACE:UPPER	D7465300	HARNESS:INTERFACE:UPPER:ASS'Y	P to P B4 (1/1)		1	O/O			LCIT PB3140:
201407-01	1407 Modification	-	D5385340	HARNESS:PAPER VOLUME SENSOR:ASS'Y	D7475340	HARNESS:PAPER VOLUME SENSOR:ASS'Y	P to P D8 (1/1)		1	O/O			LCIT PB3140:
201406-01	1406 modification	-	B8015311	HARNESS:CEBU:TANDEM TRAY:ASS'Y	D7475311	HARNESS:CEBU:TANDEM TRAY:ASS'Y	P to P C8 (1/1)		1	O/O			LCIT PB3140:
201511-01	1511 Modification	-	AA043591	TIMING BELT - 4 OS3M285	AA043713	TIMING BELT:40 S3M285	U004	18	2	O/O			LCIT PB3140:

