

LCIT PB3110/PB3140
Machine Code: D538/D581

Field Service Manual

September, 2011
Subject to change

TABLE OF CONTENTS

1. Replacement and Adjustment

Exterior Cover.....	3
Left and Right Tray.....	3
Changing the Tray Size.....	4
Electrical Components.....	5
Paper Height Sensors on Paper Storage Side.....	5
End Fence HP Sensor/Paper End Sensor 2.....	6
Tray Lift Motor.....	6
Tray Motor.....	7
Main Board.....	8
Stack Transport Clutch.....	8
Feed.....	9
Paper Feed Unit.....	9
Pick-up, Feed and Separation Rollers.....	10
Paper Feed, Paper End, Lift and Relay Sensors.....	11
INDEX.....	13

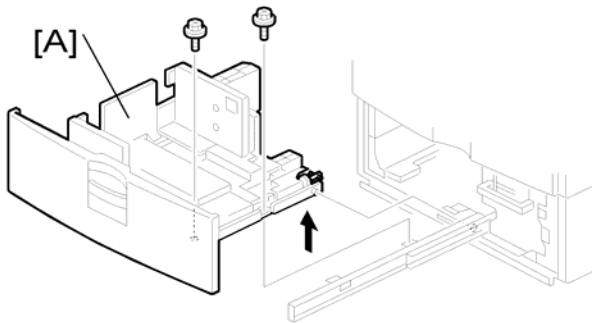


1. Replacement and Adjustment

Exterior Cover

1

Left and Right Tray

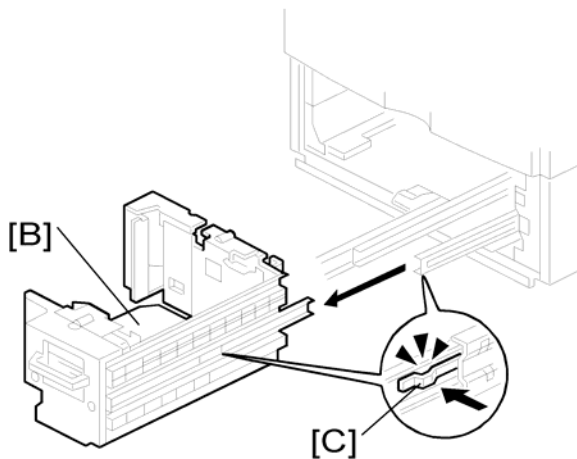


1. Pull the LCT drawer.

↓ Note

- If the right tray comes up with the left tray, push the right tray into the LCT.

2. Left tray [A] (⚙ x 2)



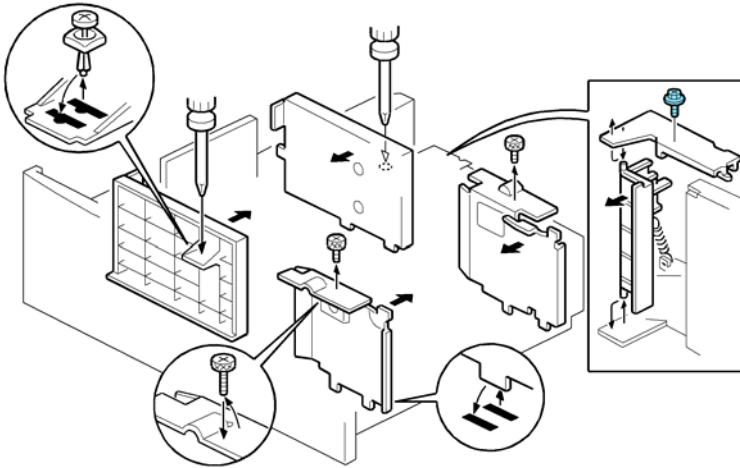
3. Remove the right tray [B] pressing down the stopper [C].


↓ Note

- When reinstalling the tray, set the tray on the guide rail and carefully push the tray in, making sure to keep the tray level.

Changing the Tray Size

1



1. Remove the fence screws ( x 5).
2. Change the position of the fences.

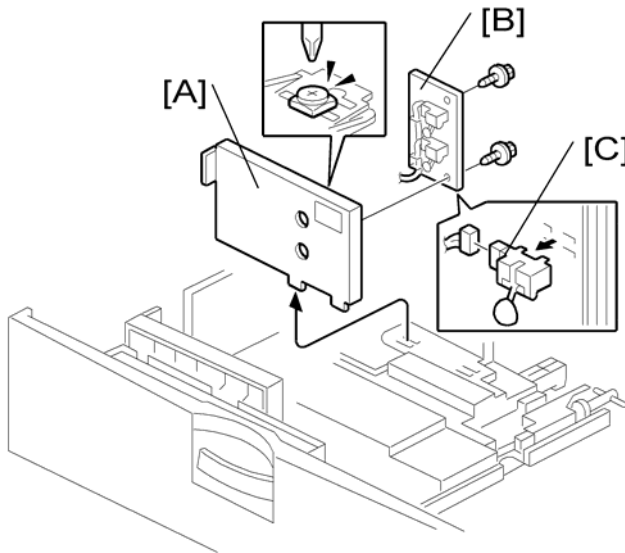
↓ Note

- Before fastening the screws, set paper in the tray.

Electrical Components

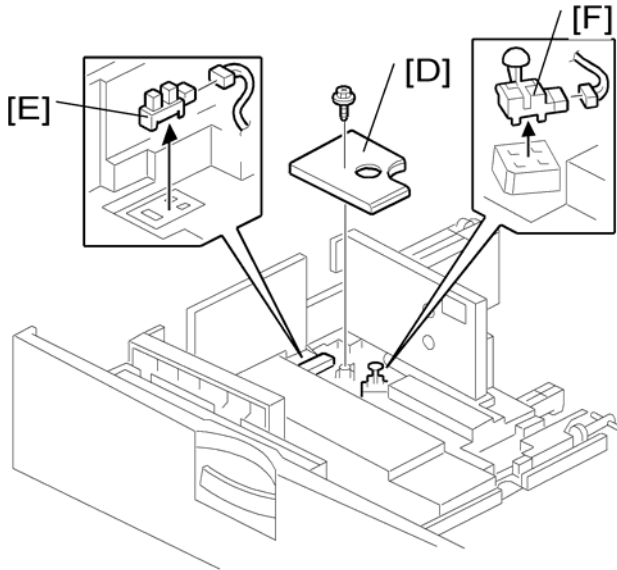
Paper Height Sensors on Paper Storage Side


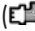

1



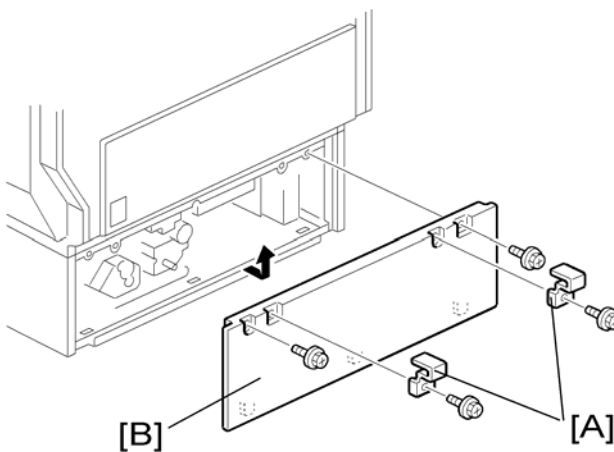
1. Tray (📄 "Left and Right Tray")
2. Rear fence [A] (🔩 x 1)
3. Rear fence bracket [B] (🔩 x 2)
4. Paper height sensors [C] (📄 x 1 each)



End Fence HP Sensor/Paper End Sensor 2

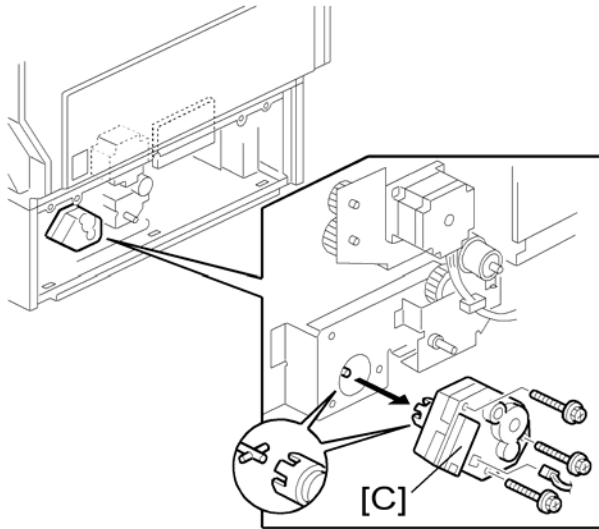


1. Bottom cover [D] ( x 1)
2. End fence HP sensor [E] ( x 1)
3. Paper end sensor 2 (paper storage side) [F] ( x 1)

Tray Lift Motor

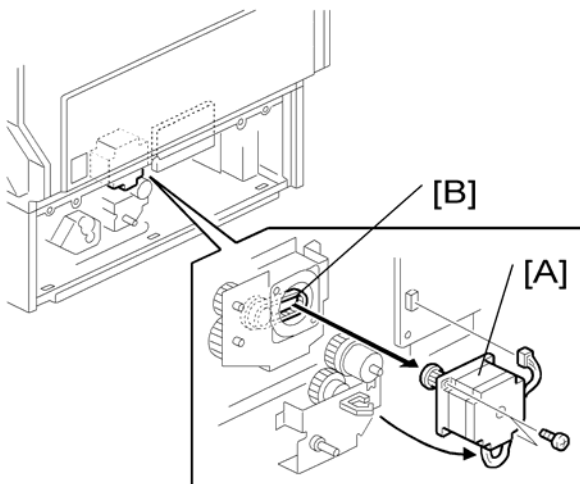


1. Securing brackets [A] ( x 1 each)
2. Rear cover [B] ( x 2)



3. Tray lift motor [C] (🔌 x 1, 🛠️ x 3)

Tray Motor



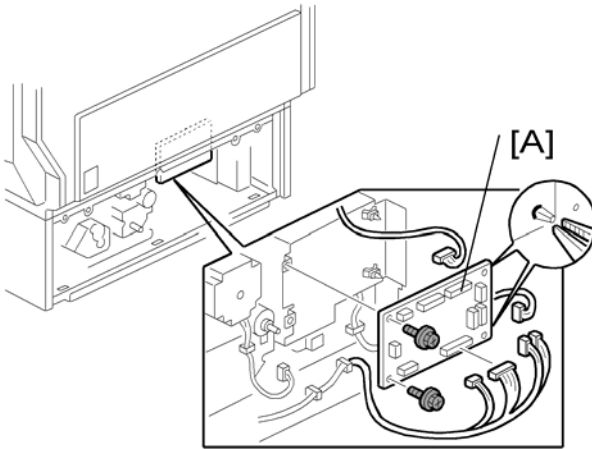
1. Rear cover (🔌 "Tray Lift Motor")
2. Tray motor [A] (🔌 x 1, 🛠️ x 2)

⬇️ Note

- When installing the tray motor, make sure that the gear of the tray motor holds the timing belt [B].

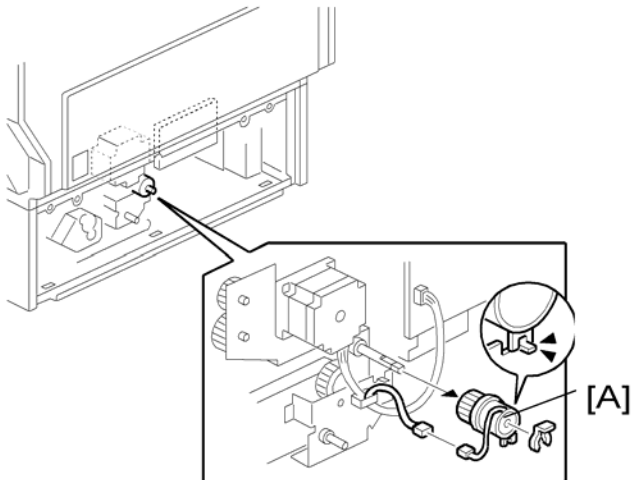
Main Board

1



1. Rear cover (🔧 "Tray Lift Motor")
2. Main board [A] (All 🧱 s, 🔧 x 2, snap x 2)

Stack Transport Clutch

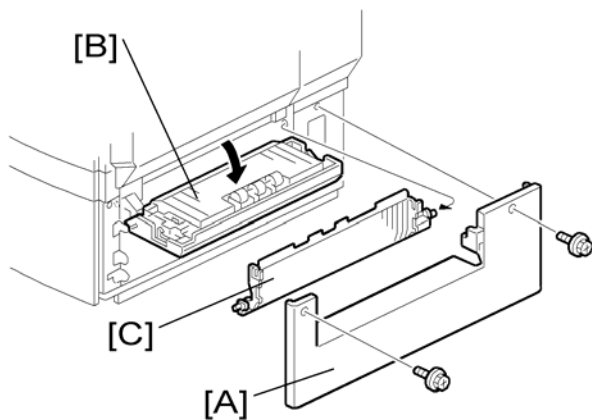


1. Rear cover (🔧 "Tray Lift Motor")
2. Stack transport clutch [A] (🧱 x 1, 🧰 x 1)

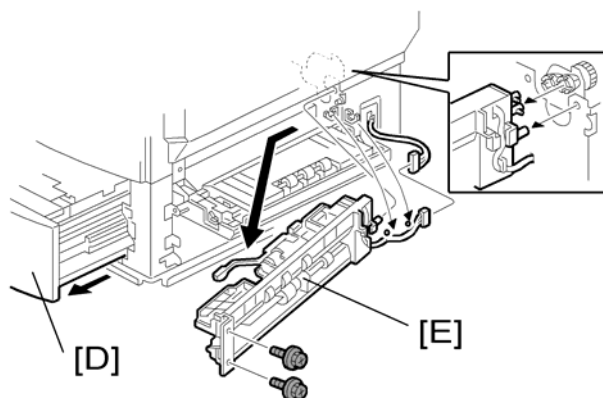
Feed



Paper Feed Unit

1

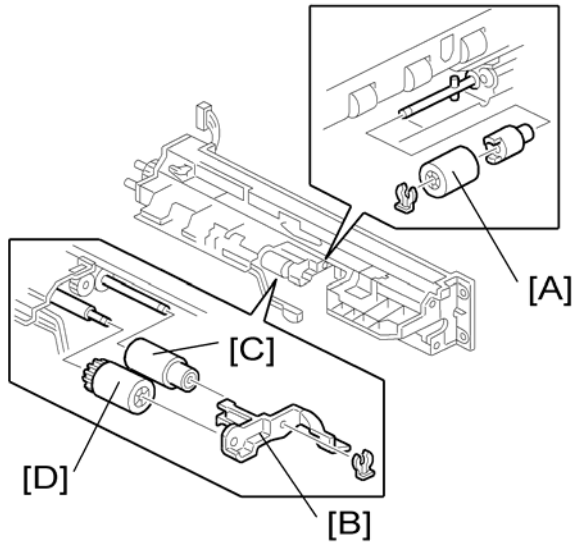


1. Right cover [A]
2. Open the vertical guide plate [B]
3. Guide plate [C]



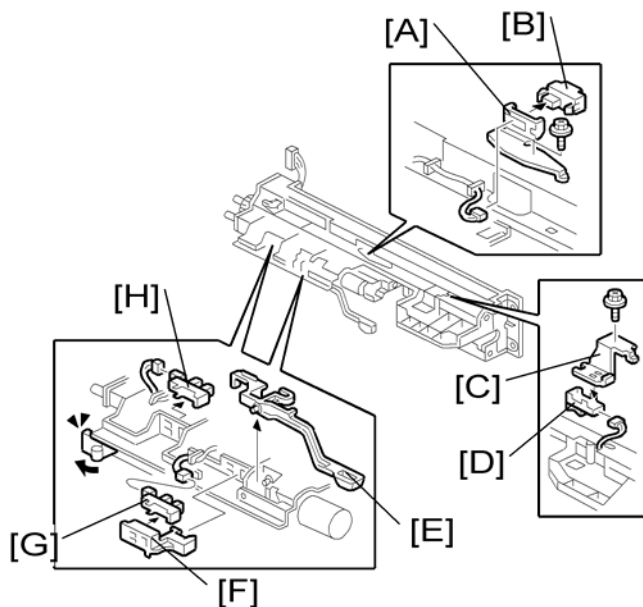
4. Pull the LCT drawer [D].
5. Paper feed unit [E] ( x 2  x 1)

Pick-up, Feed and Separation Rollers



1. Paper feed unit (☛ "Paper Feed Unit")
2. Separation roller [A] (☛ x 1)
3. Roller holder [B] (☛ x 1)
4. Feed roller [C] and pick-up roller [D]

Paper Feed, Paper End, Lift and Relay Sensors



1. Paper feed unit (📄 "Paper Feed Unit")
2. Vertical transport sensor bracket [A] (🔗 x 1, 📄 x 1)
3. Relay sensor [B]
4. Paper feed sensor bracket [C]
5. Paper feed sensor [D]
6. Paper end feeler [E]
7. Paper end sensor holder [F] (hook x 3)
8. Paper end sensor [G] (📄 x 1, hook x 3)
9. Lift sensor (📄 x 1, hook x 3)

