

**Side Tray Type C5501  
(D542)  
Parts Catalog**

# Unit All



U001  
PAPER EXIT

# U001 PAPER EXIT

14.AA043596  
TIMING BELT - 50S  
2M210

4.04513006N  
(x12)  
TAPPING SCREW -  
3X6

9.11050568  
CLAMP:LWSS-0504

18.AA063596  
(x2)  
COMPRESSION SP  
RING - EXIT ROLLE  
R

11.AA021030  
(x2)  
MAGNET CATCH



3.04503008N  
(x17)  
TAPPING SCREW -  
M3X8



2.03603008N  
(x2)  
SCREW:M3X8



20.AA082101  
(x6)  
BUSHING - 6X10X6



7.11050516  
CLAMP



6.08050089  
(x6)  
RETAINING RING -  
M4



15.AA043597  
TIMING BELT - 30S  
2M336



5.04543008Q  
TAPPING SCREW:  
3X8



16.AA043598  
TIMING BELT - 30S  
2M308



10.54472681  
SNAP RING



19.AA082063  
(x2)  
BUSHING - 8X10X5



17.AA060994  
TENSION SPRING -  
1.6N



1.03130040N  
(x2)  
SCREW:M3X4



13.AA043595  
TIMING BELT - 30S  
2M140



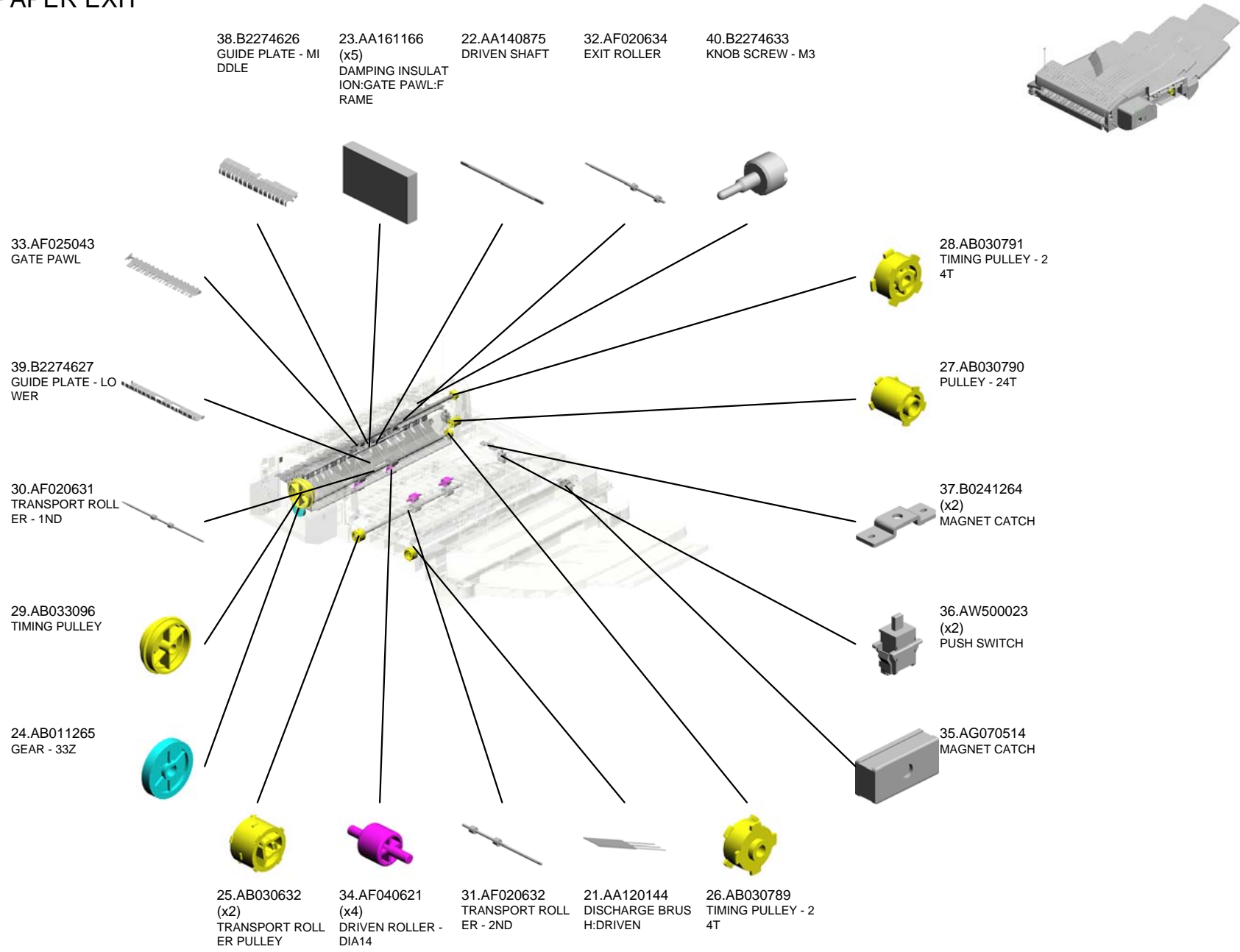
8.11050522  
(x2)  
EDGE SADDLE - L  
ES0510



12.AA043594  
TIMING BELT - 30S  
2M100

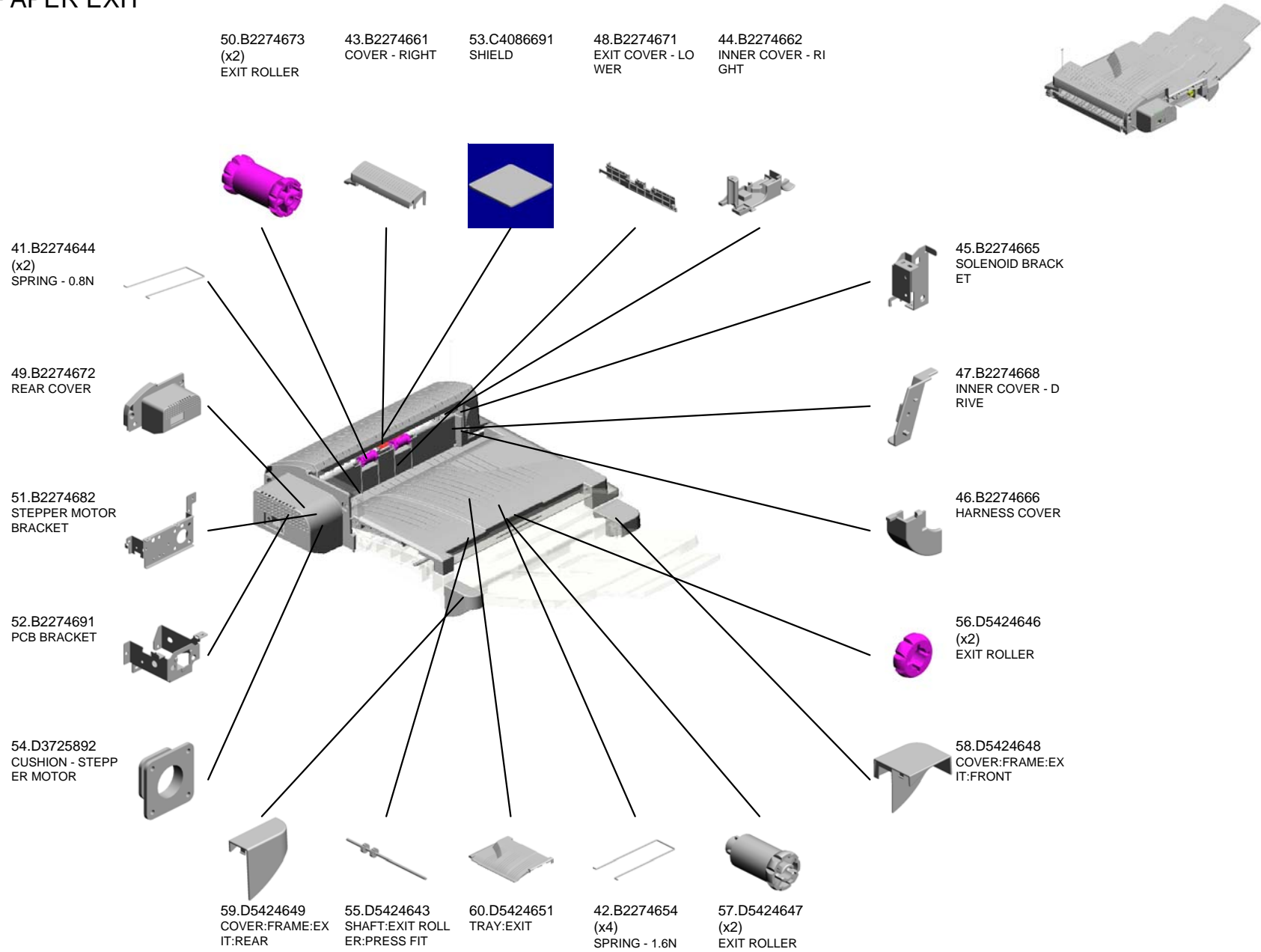


# U001 PAPER EXIT



U001

# U001 PAPER EXIT



U001

# U001 PAPER EXIT

77.GW010007  
(x2)  
PHOTO REFLECTI  
ON SENSOR:EXIT

68.D5424669  
DISCHARGE BRUS  
H:EXIT

65.D5424656  
GROUND PLATE:DI  
SCHARGE BRUSH

74.D5424752  
COVER:FRAME

67.D5424663  
DC SOLENOID:24V  
:2.1N:ASSY

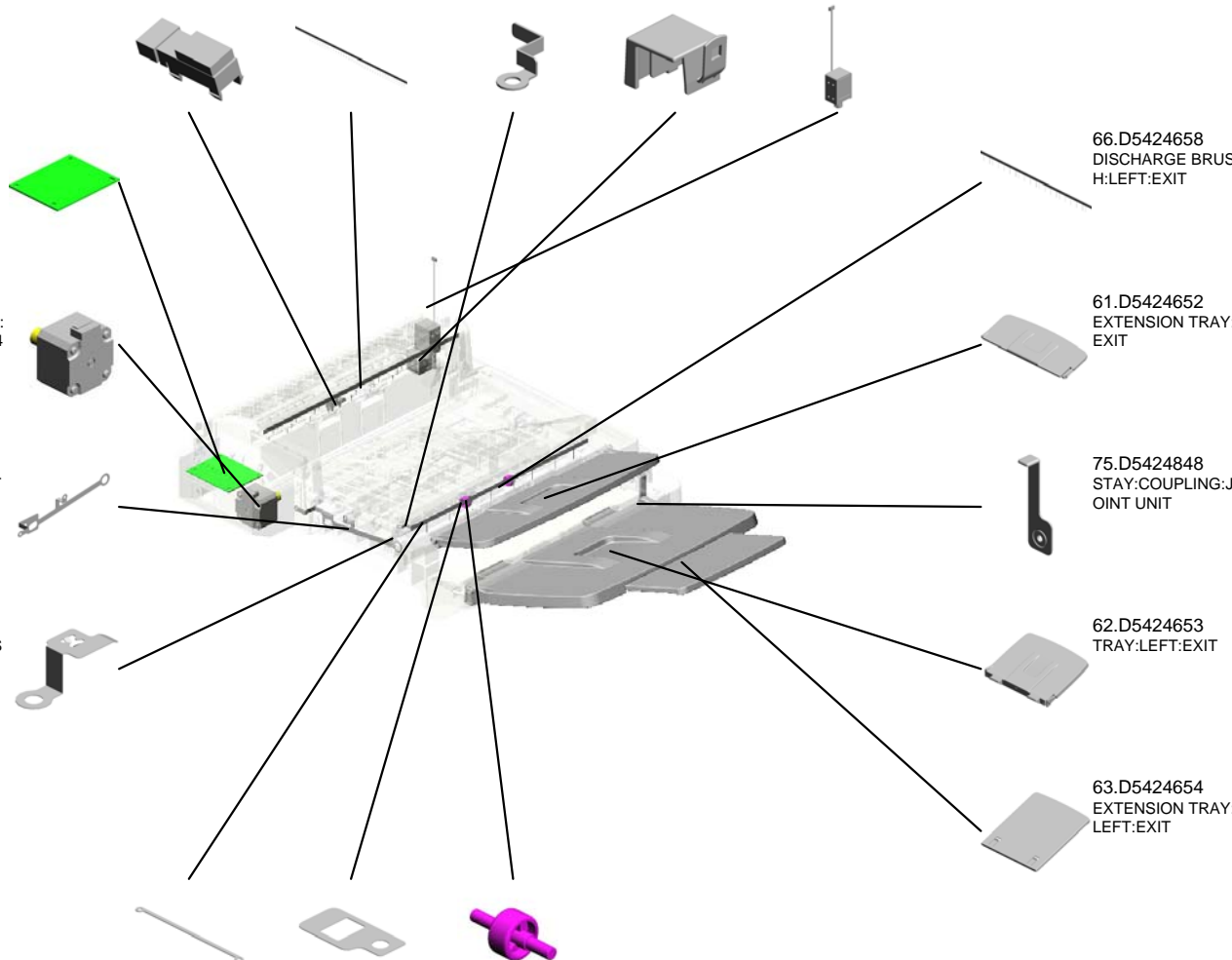


76.D5425110  
PCB

69.D5424681  
STEPPER MOTOR:  
JOINT UNIT:DC 2.4  
W

73.D5424748  
GROUND PLATE:T  
RANSPORT

72.D5424747  
GROUND PLATE:S  
ENSOR:EXIT



66.D5424658  
DISCHARGE BRUS  
H:LEFT:EXIT

61.D5424652  
EXTENSION TRAY:  
EXIT

75.D5424848  
STAY:COUPLING:J  
OINT UNIT

62.D5424653  
TRAY:LEFT:EXIT

63.D5424654  
EXTENSION TRAY:  
LEFT:EXIT

71.D5424746  
GROUND PLATE:S  
ENSOR:CONNECTI  
NG

70.D5424745  
GROUND PLATE:S  
ENSOR

64.D5424655  
(x2)  
ROLLER:DRIVEN:D  
IA14:EXIT

## Exclusive Parts

Number	Part Name	Group	ID
54472681	SNAP RING	U001	10
AA021030	MAGNET CATCH	U001	11
AA043594	TIMING BELT - 30S2M100	U001	12
AA043595	TIMING BELT - 30S2M140	U001	13
AA043596	TIMING BELT - 50S2M210	U001	14
AA043597	TIMING BELT - 30S2M336	U001	15
AA043598	TIMING BELT - 30S2M308	U001	16
AA060994	TENSION SPRING - 1.6N	U001	17
AA063596	COMPRESSION SPRING - EXIT ROLLER	U001	18
AA082063	BUSHING - 8X10X5	U001	19
AA082101	BUSHING - 6X10X6	U001	20
AA120144	DISCHARGE BRUSH:DRIVEN	U001	21
AA140875	DRIVEN SHAFT	U001	22
AA161166	DAMPING INSULATION:GATE PAWL:FRAME	U001	23
AB011265	GEAR - 33Z	U001	24
AB030632	TRANSPORT ROLLER PULLEY	U001	25
AB030789	TIMING PULLEY - 24T	U001	26
AB030790	PULLEY - 24T	U001	27
AB030791	TIMING PULLEY - 24T	U001	28
AB033096	TIMING PULLEY	U001	29
AF020631	TRANSPORT ROLLER - 1ND	U001	30
AF020632	TRANSPORT ROLLER - 2ND	U001	31
AF020634	EXIT ROLLER	U001	32
AF025043	GATE PAWL	U001	33
AF040621	DRIVEN ROLLER - DIA14	U001	34
AG070514	MAGNET CATCH	U001	35
AW500023	PUSH SWITCH	U001	36
B0241264	MAGNET CATCH	U001	37
B2274626	GUIDE PLATE - MIDDLE	U001	38
B2274627	GUIDE PLATE - LOWER	U001	39
B2274633	KNOB SCREW - M3	U001	40
B2274644	SPRING - 0.8N	U001	41
B2274654	SPRING - 1.6N	U001	42
B2274661	COVER - RIGHT	U001	43
B2274662	INNER COVER - RIGHT	U001	44
B2274665	SOLENOID BRACKET	U001	45

Number	Part Name	Group	ID
B2274666	HARNESS COVER	U001	46
B2274668	INNER COVER - DRIVE	U001	47
B2274671	EXIT COVER - LOWER	U001	48
B2274672	REAR COVER	U001	49
B2274673	EXIT ROLLER	U001	50
B2274682	STEPPER MOTOR BRACKET	U001	51
B2274691	PCB BRACKET	U001	52
C4086691	SHIELD	U001	53
D3725892	CUSHION - STEPPER MOTOR	U001	54
D5424643	SHAFT:EXIT ROLLER:PRESS FIT	U001	55
D5424646	EXIT ROLLER	U001	56
D5424647	EXIT ROLLER	U001	57
D5424648	COVER:FRAME:EXIT:FRONT	U001	58
D5424649	COVER:FRAME:EXIT:REAR	U001	59
D5424651	TRAY:EXIT	U001	60
D5424652	EXTENSION TRAY:EXIT	U001	61
D5424653	TRAY:LEFT:EXIT	U001	62
D5424654	EXTENSION TRAY:LEFT:EXIT	U001	63
D5424655	ROLLER:DRIVEN:DIA14:EXIT	U001	64
D5424656	GROUND PLATE:DISCHARGE BRUSH	U001	65
D5424658	DISCHARGE BRUSH:LEFT:EXIT	U001	66
D5424663	DC SOLENOID:24V:2.1N:ASS'Y	U001	67
D5424669	DISCHARGE BRUSH:EXIT	U001	68
D5424681	STEPPER MOTOR:JOINT UNIT:DC 2.4W	U001	69
D5424745	GROUND PLATE:SENSOR	U001	70
D5424746	GROUND PLATE:SENSOR:CONNECTING	U001	71
D5424747	GROUND PLATE:SENSOR:EXIT	U001	72
D5424748	GROUND PLATE:TRANSPORT	U001	73
D5424752	COVER:FRAME	U001	74
D5424848	STAY:COUPLING:JOINT UNIT	U001	75
D5425110	PCB	U001	76
GW010007	PHOTO REFLECTION SENSOR:EXIT	U001	77

## Standard Parts



03130040N  
SCREW:M3X4



03603008N  
SCREW:M3X8



04503008N  
TAPPING SCREW - M3X8



04513006N  
TAPPING SCREW - 3X6



04543008Q  
TAPPING SCREW:3X8



08050089  
RETAINING RING - M4



11050516  
CLAMP



11050522  
EDGE SADDLE - LES0510



11050568  
CLAMP:LWSS-0504



