

Reissued: 11-Nov-03

Model: Russian-C2 1000-sheet Finisher (SR790)	Date: 9-Jul-02	No.: MB408001a
---	----------------	----------------

MB Correction

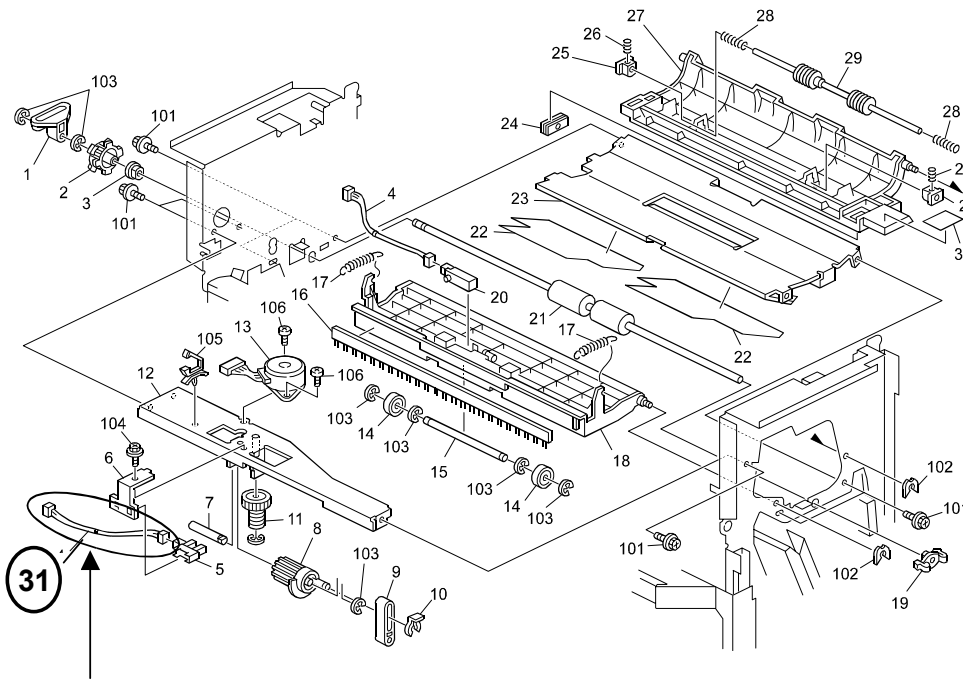
The items in bold italics have been corrected or added.

Modified Article: Parts Catalog Correction		Prepared by: Y. Ohtani	
From: 1st Tech. Support Sec. Service Support Dept.			
Reason for Modification:	<input type="checkbox"/> Parts catalog correction	<input type="checkbox"/> Vendor change	<input type="checkbox"/> To meet standards ()
	<input type="checkbox"/> To facilitate assembly	<input type="checkbox"/> To improve reliability	
	<input checked="" type="checkbox"/> Part standardization	<input type="checkbox"/> Other	

The following have been changed due to parts standardization.

Old part number	New part number	Description	Q'ty	Int	Page	Index	Note
B4082156	B4082157	Left Guide Plate - Entrance	1-1		5	12	
<i>B3525323</i>		<i>Sensor Relay Harness – 280 mm</i>	<i>2-1</i>		<i>7</i>	<i>4</i>	<i>*1</i>
	<i>B4085340</i>	<i>Harness: Connecting: 325mm</i>	<i>0-1</i>		<i>7</i>	<i>31</i>	<i>*1</i>
B4085210	B4085212	Sensor Main Harness	1-1		23	2	
B4085100	B4085110	Main Control Board	1-1		23	6	
B4087111	B4087112	Decal – Knob R2	1-1		5	26	
B4087101	B4087102	Decal – Shift tray R1	1-1		7	30	
B4087121	B4087122	Decal – Stapler tray R3	1-1		11	3	
B4087131	B4087132	Decal – Stapler Tray Exit R4	1-1		13	14	
B4087141	B4087142	Decal – Jogger Fence R5	1-1		15	30	

Note: Although the B3525323 harness was previously used in two places in the illustration below, only the harness that is circled has been changed to B4085340. Specifically, the harness was lengthened from 280mm to 325mm, which minimizes electrostatic interference at the connector area.

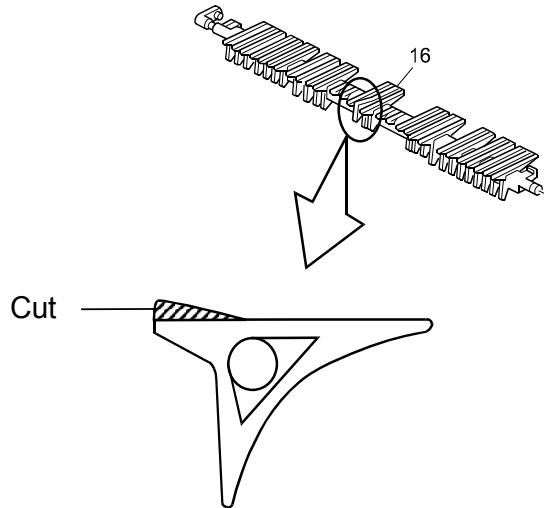


Changed to B4085340 (325mm).

Model: Russian-C2 1000-sheet Finisher (SR790)		Date: 3-Apr-03	No.: MB408002
Modified Article: Upper Paper Guide		Prepared by: S. Tomoe	
From: 1st Tech. Support Sec. Service Support Dept.			
Reason for Modification:	<input type="checkbox"/> Parts catalog correction	<input type="checkbox"/> Vendor change	<input type="checkbox"/> To meet standards ()
	<input type="checkbox"/> To facilitate assembly	<input type="checkbox"/> To improve reliability	
	<input type="checkbox"/> Part standardization	<input checked="" type="checkbox"/> Other	

To improve OHP paper feed, the center rib for the Upper Paper Guide has been deleted, as shown below.

Old part number	New part number	Description	Q'ty	Int	Page	Index	Note
B4082721	B4082723	Upper Paper Guide	1-1		5	16	



Japan Production

MODEL NAME	DESTINATION	CODE	SERIAL NO.
SR790	All RICOH subsidiaries, NRG, SAVIN	B408-17	J1021100618
SR790	Infotec	B408-26	4N50130001

Reissued: 11-Nov-03

Model: Russian-C2 1000-sheet Finisher (SR790)	Date: 19-Sep-03	No.: MB408003a
---	-----------------	----------------

MB Correction

The items in bold italics have been corrected or added.

Modified Article: Harness		Prepared by: Y. Ohtani	
From: 1st Tech. Support Sec. Service Support Dept.			
Reason for Modification:	<input type="checkbox"/> Parts catalog correction	<input type="checkbox"/> Vendor change	<input type="checkbox"/> To meet standards ()
	<input type="checkbox"/> To facilitate assembly	<input type="checkbox"/> To improve reliability	
	<input checked="" type="checkbox"/> Part standardization	<input type="checkbox"/> Other	

The following part changes are due to a change in vendors.

Old part number	New part number	Description	Q'ty	Int	Page	Index	Note
B4085212	B4085215	HARNESS: SENSOR: MAIN	1-1	O/O	23	2	
B4085220B	B4085225	HARNESS – SENSOR STAPLER TRAY	1-1	O/O	17,23	2,5	
B4085230B	B4085235	SENSOR HARNESS – LOWER TRAY	1-1	O/O	23	3	
B4085240A	B4085245	MAIN MOTOR HARNESS	1-1	O/O	23	7	
B4085252	B4085255	HARNESS: STAPLER	1-1	O/O			
B4085300	B4085305	HARNESS – PAPER SENSOR	1-1	O/O	9	7	
B4085310A	B4085315	HARNESS – CONNECTING	1-1	O/O	5	8	
B4085320	B4085325	SENSOR HARNESS	1-1	O/O	15	24	
B4085330A	B4085335	HARNESS – STAPLER TRAY	1-1	O/O	15	1	
B4085340	B4085345	HARNESS: CONNECTING: 325MM	1-1	O/O	7	31	
B3525323	B4085355	SENSOR RELAY HARNESS – 280MM	1-1, 1-1	O/O	7, 13	4, 24	

To apply part standardization with the Adonis-C3, the length of following harness has been changed. The new harness is 60 mm longer than old one. This provides enough length for connection to the mainframe.

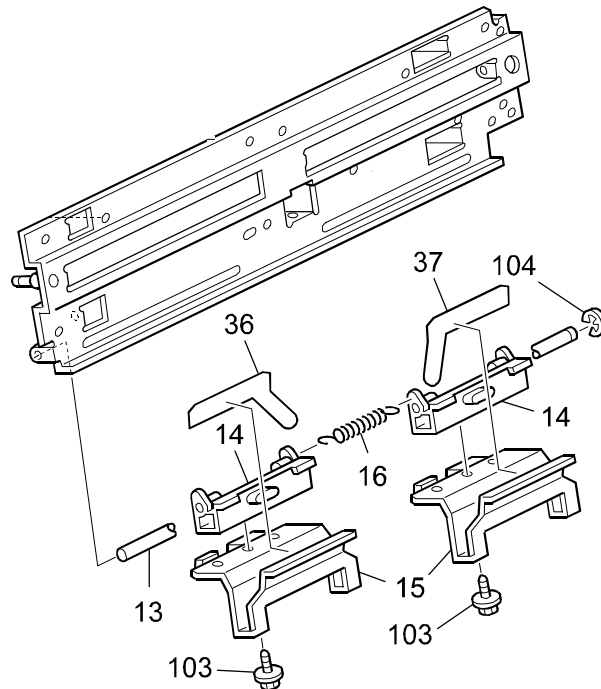
Old part number	New part number	Description	Q'ty	Int	Page	Index	Note
B4085201A	B4085205	INTERFACE HARNESS ASS'Y	1	O/O	23	1	

Model: Russian-C2 1000-sheet Finisher (SR790)		Date: 12-Feb-04	No.: MB408004
Modified Article: Staple Tray		Prepared by: S.Tomoe	
From: 1st Tech. Support Sec. Service Support Dept.			
Reason for Modification:	<input type="checkbox"/> Parts catalog correction	<input type="checkbox"/> Vendor change	<input type="checkbox"/> To meet standards ()
	<input type="checkbox"/> To facilitate assembly	<input type="checkbox"/> To improve reliability	
	<input type="checkbox"/> Part standardization	<input checked="" type="checkbox"/> Other	

The following changes have been applied to ensure proper paper stacking in the staple tray:

1. Two fence Mylars have been newly added.
2. The material of the positioning roller has been changed.
3. The software has been changed to modify the positioning roller On-timing (see RTB #RB022028).

Old part number	New part number	Description	Q'ty	Int	Page	Index	Note
	B4084344	Front Fence Mylar	0-1		15	36	
	B4084347	Rear Fence Mylar	0-1		15	37	
B4082431	B4082435	Positioning Roller	1-1	X/O	13	2	
B4085110	B4085112	Main Control Board	1-1	X/O	28	6	
B4085130	B4085132	EPROM – Main Control	1-1	X/O	28	4	



MODEL NAME	DESTINATION	CODE	SERIAL NO.
SR790	All RICOH subsidiaries, NRG, SAVIN	B408-17	J1011200001
SR790	Infotec	B408-26	4N51210001

Model: Russian-C2 1000-sheet Finisher (SR790)		Date: 12-Feb-04	No.: MB408005
Modified Article: Main Controller		Prepared by: S. Tomoe	
From: 1st Tech. Support Sec. Service Support Dept.			
Reason for Modification:	<input type="checkbox"/> Parts catalog correction <input type="checkbox"/> To facilitate assembly <input type="checkbox"/> Part standardization	<input type="checkbox"/> Vendor change <input type="checkbox"/> To improve reliability <input checked="" type="checkbox"/> Other	<input type="checkbox"/> To meet standards ()

The following modifications have been applied to the main control board:

1. Solder has been changed over to a lead-free type
2. Software has been changed as a solution for SC620 (see RTB#: RB022028)

Old part number	New part number	Description	Q'ty	Int	Page	Index	Note
B4085112	B4085114	Main Control Board	1-1	X/O	28	6	
B4085132	B4085133	EPROM – Main Control	1-1	X/O	28	4	



MODEL NAME	DESTINATION	CODE	SERIAL NO.
SR790	All RICOH subsidiaries, NRG, SAVIN	B408-17	J1020100993
SR790	Infotec	B408-26	4N50330001

Model: Russian-C2 1000-sheet Finisher (SR790)		Date: 12-Feb-04	No.: MB408006
Modified Article: Main Controller		Prepared by: S. Tomoe	
From: 1st Tech. Support Sec. Service Support Dept.			
Reason for Modification:	<input type="checkbox"/> Parts catalog correction <input type="checkbox"/> To facilitate assembly <input type="checkbox"/> Part standardization	<input type="checkbox"/> Vendor change <input type="checkbox"/> To improve reliability <input checked="" type="checkbox"/> Other	<input type="checkbox"/> To meet standards ()

The main control board software has been modified to include a solution for the “cover open” display in Off mode (see RTB #RB022028).

Old part number	New part number	Description	Q'ty	Int	Page	Index	Note
B4085114	B4085115	Main Control Board	1-1	X/O	28	6	
B4085133	B4085134	EPROM – Main Control	1-1	X/O	28	4	



MODEL NAME	DESTINATION	CODE	SERIAL NO.
SR790	All RICOH subsidiaries, NRG, SAVIN	B408-17	J1020300001
SR790	Infotec	B408-26	4N50320071

Model: Russian-C2 1000-sheet Finisher (SR790)		Date: 13-Feb-04	No.: MB408007
Modified Article: Main Controller		Prepared by: S. Tomoe	
From: 1st Tech. Support Sec. Service Support Dept.			
Reason for Modification:	<input type="checkbox"/> Parts catalog correction <input type="checkbox"/> To facilitate assembly <input type="checkbox"/> Part standardization	<input type="checkbox"/> Vendor change <input type="checkbox"/> To improve reliability <input checked="" type="checkbox"/> Other	<input type="checkbox"/> To meet standards ()

The main control board software has been modified to include the solution for poor stacking in the staple tray (see RTB #RB022028).

Old part number	New part number	Description	Q'ty	Int	Page	Index	Note
B4085115	B4085116	Main Control Board	1-1	X/O	28	6	
B4085134	B4085135	EPROM – Main Control	1-1	X/O	28	4	



MODEL NAME	DESTINATION	CODE	SERIAL NO.
SR790	All RICOH subsidiaries, NRG, SAVIN	B408-17	J1020800001
SR790	Infotec	B408-26	4N50130001

Model: Russian-C2 1000-sheet Finisher (SR790)		Date: 13-Feb-04	No.: MB408008
Modified Article: Main Controller		Prepared by: S. Tomoe	
From: 1st Tech. Support Sec. Service Support Dept.			
Reason for Modification:	<input type="checkbox"/> Parts catalog correction <input type="checkbox"/> To facilitate assembly <input type="checkbox"/> Part standardization	<input type="checkbox"/> Vendor change <input type="checkbox"/> To improve reliability <input checked="" type="checkbox"/> Other	<input type="checkbox"/> To meet standards ()

The main control board has been changed to include the solution for postcard jams (see RTB #RB022028).

Old part number	New part number	Description	Q'ty	Int	Page	Index	Note
B4085116	B4085117	Main Control Board	1-1	X/O	28	6	
B4085135	B4085136	EPROM – Main Control	1-1	X/O	28	4	



Japan Production

MODEL NAME	DESTINATION	CODE	SERIAL NO.
SR790	All RICOH subsidiaries, NRG, SAVIN	B408-17	J1020800864
SR790	Infotec	B408-26	4N50130001

Model: Russian-C2 1000-sheet Finisher (SR790)	Date: 22-Mar-05	No.: MB408009
---	-----------------	---------------

Modified Article: Spring		Prepared by: S. Tomoe	
From: 1st Tech. Support Sec. Service Support Dept.			
Reason for Modification:	<input type="checkbox"/> Parts catalog correction	<input checked="" type="checkbox"/> Vendor change	<input type="checkbox"/> To meet standards ()
	<input type="checkbox"/> To facilitate assembly	<input type="checkbox"/> To improve reliability	
	<input type="checkbox"/> Part standardization	<input type="checkbox"/> Other	

Old part number	New part number	Description	Q'ty	Int	Page	Index	Note
A3003759	B7004107	Spring	1-1	O/O	51	16	

Change/Reason: Vendor change.



Model: Russian-C2 1000-sheet Finisher (SR790)	Date: 22-Mar-05	No.: MB408010
---	-----------------	---------------

Modified Article: Mechanical Parts		Prepared by: S. Tomoe	
From: 1st Tech. Support Sec. Service Support Dept.			
Reason for Modification:	<input type="checkbox"/> Parts catalog correction	<input checked="" type="checkbox"/> Vendor change	<input type="checkbox"/> To meet standards ()
	<input type="checkbox"/> To facilitate assembly	<input type="checkbox"/> To improve reliability	
	<input type="checkbox"/> Part standardization	<input type="checkbox"/> Other	

Old part number	New part number	Description	Q'ty	Int	Page	Index	Note
B4081312	B4081314	Caster	4-4	O/O	3	7	
AG070014	AG070514	Magnet Clutch	4-4	O/O	5 7 11	18 24 2	
AW020086	AW020156	Photointerruptor	5-5	O/O	7 9 15 17 23	5 8 23 9 10	
AW010093	AW010109	Photo Reflection Sensor – PS-17ND1	2-2	O/O	7 15	20 27	
A6971125	AA143790	Stepped Screw - Lever	7-7	O/O	9 15 17 21	15 12 6 12	
G0204429	AW020166	Exit Sensor	2-2	O/O	15 19	2 12	
54424121	AA062334	Spring – Oil Blade	4-4	O/O	17 21	5 13	
A6664170	B4084129	Stepped Screw – M3x6	1-1	O/O	17	15	
AA060092	AA062333	Release Spring	1-1	O/O	21	9	
B4082952	B4082955	Bracket - Tension	3-3	O/O	21	10	
G0202630	AG070512	Magnetic Catch	1-1	O/O	3	15	

Change: The materials for these parts were changed to more environmentally-friendly types.

Reason: This is part of Ricoh's ongoing application of in-house environmental standards.

Model: Russian-C2 1000-sheet Finisher (SR790)		Date: 30-Mar-05	No.: MB408011
Modified Article: Lower Paper Guide		Prepared by: S. Tomoe	
From: 1st Tech. Support Sec. Service Support Dept.			
Reason for Modification:	<input type="checkbox"/> Parts catalog correction <input type="checkbox"/> To facilitate assembly <input type="checkbox"/> Part standardization	<input type="checkbox"/> Vendor change <input type="checkbox"/> To improve reliability <input checked="" type="checkbox"/> Other	<input type="checkbox"/> To meet standards ()

Old part number	New part number	Description	Q'ty	Int	Page	Index	Note
B4082521	B4082541	Lower Paper Guide	1-1	X/O	11	10	

Change: Shape of the lower paper guide.

Reason: To ensure that a jam does not occur with thin paper.

Note: This can occur if the paper catches the burr on the old paper guide surface.

Japan Production

MODEL NAME	DESTINATION	CODE	SERIAL NO.
SR790	All RICOH subsidiaries, NRG, SAVIN	B408-17	J1030505204
SR790	Infotec	B408-26	4N50530151

Model: Russian-C2 1000 Sheet Finisher (SR790)		Date: 27-Jan-06	No.: MB408012
Modified Article: Stepper Motor		Prepared by: K. Hamada	
From: 1st Tech. Support Sec. Service Support Dept.			
Reason for Modification:	<input type="checkbox"/> Parts catalog correction <input type="checkbox"/> Vendor change <input checked="" type="checkbox"/> Other <input type="checkbox"/> To facilitate assembly <input type="checkbox"/> To improve reliability <input type="checkbox"/> To meet standards <input type="checkbox"/> Part standardization <input type="checkbox"/> Product Safety ()		

Old part number	New part number	Description	Q'ty	Int	Page	Index	Note
B4085500		Stepper Motor – 6.2W	3-3	X/O	21	3	
	▶ B4085502	Stepper Motor: Sub Ass'y					
B4085510		Stepper Motor – 6.2W	1-1	X/O	15	18	
	▶ B4085512	Stepper Motor: Sub Ass'y					

Change: The materials for these parts were changed to more environmentally-friendly types.

Reason: This is part of Ricoh's ongoing application of in-house environmental standards.

Model: Russian-C2 1000-sheet Finisher (SR790)	Date: 31-Aug-06	No.: MB408013
---	-----------------	---------------

Modified Article: Main Controller		Prepared by: S. Tomoe	
From: 1st Tech. Support Sec. Service Support Dept.			
Reason for Modification:	<input type="checkbox"/> Parts catalog correction	<input type="checkbox"/> Vendor change	<input type="checkbox"/> To meet standards ()
	<input type="checkbox"/> To facilitate assembly	<input type="checkbox"/> To improve reliability	
	<input type="checkbox"/> Part standardization	<input checked="" type="checkbox"/> Other	

Old part number	New part number	Description	Q'ty	Int	Page	Index	Note
B4085150	B4085152	Main Control Board	1-1	X/O	23	6	
B4085160	B4085161	EPROM – Main Control	1-1	X/O	23	4	

Change: The software for the main control board was changed.

Reason: To fix the issues announced in the RTB below.

Note: For details, see RTB #RB022028.

Japan Production

MODEL NAME	DESTINATION	CODE	SERIAL NO.
SR790	All RICOH subsidiaries, NRG, SAVIN	B408-50	J1067680001
SR790	Infotec	B408-51	4N58360001

Model: Russian-C2 1000-sheet Finisher (SR790)		Date: 24-Jan-08	No.: MB408014
Modified Article: Interface Harness		Prepared by: S. Tomoe	
From: 1st Tech. Support Sec. Service Support Dept.			
Reason for Modification:	<input type="checkbox"/> Parts catalog correction	<input checked="" type="checkbox"/> Vendor change	<input type="checkbox"/> To meet standards ()
	<input type="checkbox"/> To facilitate assembly	<input type="checkbox"/> To improve reliability	
	<input type="checkbox"/> Part standardization	<input type="checkbox"/> Other	

Old part number	New part number	Description	Q'ty	Int	Page	Index	Note
B4085261	B4085281	Harness - Interface	1-1	0/O	22	1	

Change/ Reason: Vendor change.

Model: Russian-C2 1000-sheet Finisher (SR790)		Date: 18-Jun-08	No.: MB408015
Modified Article: Stapler Exit Guide Plate		Prepared by: S. Tomoe	
From: 2nd Tech. Support Sec. Service Support Dept.			
Reason for Modification:	<input type="checkbox"/> Parts catalog correction	<input type="checkbox"/> Vendor change	<input type="checkbox"/> To meet standards ()
	<input type="checkbox"/> To facilitate assembly	<input checked="" type="checkbox"/> To improve reliability	
	<input type="checkbox"/> Part standardization	<input type="checkbox"/> Other	

Old part number	New part number	Description	Q'ty	Int	Page	Index	Note
B4082182	B4082184	Guide Plate – Exit Stapler	1-1	X/O	9	12	

Change: The angle of the guide plate (paper feed surface) was decreased.

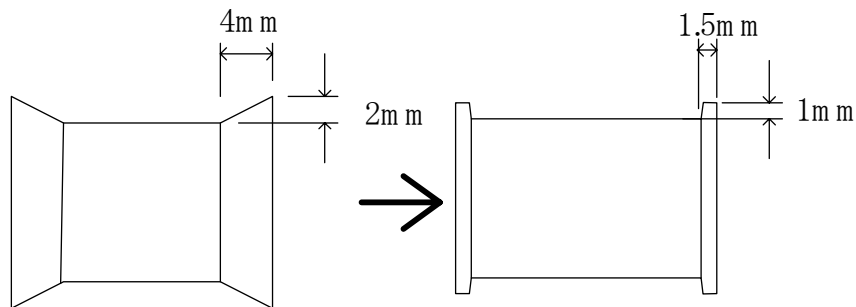
Reason: To improve paper stack performance.

Model: Russian-C2 1000-sheet Finisher (SR790)		Date: 25-Jun-08	No.: MB408016
Modified Article: Interface Harness		Prepared by: S. Tomoe	
From: 2nd Tech. Support Sec. Service Support Dept.			
Reason for Modification:	<input type="checkbox"/> Parts catalog correction	<input checked="" type="checkbox"/> Vendor change	<input type="checkbox"/> To meet standards ()
	<input type="checkbox"/> To facilitate assembly	<input type="checkbox"/> To improve reliability	
	<input type="checkbox"/> Part standardization	<input type="checkbox"/> Other	

Old part number	New part number	Description	Q'ty	Int	Page	Index	Note
B4082231	B4082232	Exit Roller – Proof Tray	1-1	X/O	5	6	

Change: The shape of the roller was changed.

Reason: To ensure that thin white/black vertical lines do not appear on the image.



Model: Russian-C2 1000-sheet Finisher (SR790)		Date: 29-Jul-08	No.: MB408017
Modified Article: DC Motor		Prepared by: S. Tomoe	
From: 2nd Tech. Support Sec. Service Support Dept.			
Reason for Modification:	<input type="checkbox"/> Parts catalog correction <input type="checkbox"/> To facilitate assembly <input type="checkbox"/> Part standardization	<input checked="" type="checkbox"/> Vendor change <input type="checkbox"/> To improve reliability <input type="checkbox"/> Other	<input type="checkbox"/> To meet standards ()

Old part number	New part number	Description	Q'ty	Int	Page	Index	Note
AX040214	AX040238	DC Motor:Shift:Upper Lower:Drive	1-1	O/O	19	13	

Change/ Reason: Vendor change.

Model: Russian-C2 1000-sheet Finisher (SR790)		Date: 24-Feb-09	No.: MB408018
Modified Article: Interlock Switch		Prepared by: S.Tomoe	
From: 2nd Tech. Support Sec. Service Support Dept.			
Reason for Modification:	<input type="checkbox"/> Parts catalog correction	<input type="checkbox"/> Vendor change	<input type="checkbox"/> Other
	<input type="checkbox"/> To facilitate assembly	<input checked="" type="checkbox"/> To improve reliability	<input type="checkbox"/> To meet standards
	<input type="checkbox"/> Part standardization	<input type="checkbox"/> Product Safety	()

Old part number	New part number	Description	Q'ty	Int	Page	Index	Note
12042751	12042844	Interlock Switch	1	X/O	11	104	

Change/ Reason: To improve reliability.



Part Change Information List

Date: June 30, 2009

Model	Code	PCIL Nr.	PCIL Correction	Old part number	New part number	Description	Old Q'ty	New Q'ty	Int	3DPC	Page	Index	Set	Set Int	RTB	Note	Ref. Nr.	ECN Nr.
R-C2/AT-C1 1000 Sheet Finisher (SR790)	B408	200906		B4085161	B4085162	ROM:MAIN CONTROL	1	1	X/O		23	4					V0901089	9040417



Part Change Information List

Date: July 31, 2009

Model	Code	PCIL Nr.	PCIL Correction	Old part number	New part number	Description	Old Q'ty	New Q'ty	Int	3DPC	Page	Index	Set	Set Int	RTB	Note	Ref. Nr.	ECN Nr.
R-C2/AT-C1 1000 Sheet Finisher (SR790)	B408	200907		04523020B	04523020N	TAPPING SCREW - 3X20	2	2	O/O		9	103					V0900834	



Part Change Information List

Date: December 29, 2009

Model	Code	PCIL Nr.	PCIL Correction	Old part number	New part number	Description	Old Q'ty	New Q'ty	Int	3DPC	Page	Index	Set	Set Int	RTB	Note	Ref. Nr.	ECN Nr.
R-C2/AT-C1 1000 Sheet Finisher (SR790)	B408	200912		B4083231	B4083235	GUIDE PLATE:REAR:PEEN	1	1	O/O		19	3					V0902293	9080658
R-C2/AT-C1 1000 Sheet Finisher (SR790)	B408	200912		B4083211	B4083212	BASE:TRAY	1	1	O/O		19	4					V0902293	9080658
R-C2/AT-C1 1000 Sheet Finisher (SR790)	B408	200912		B4083221	B4083225	GUIDE PLATE:FRONT:PEEN	1	1	O/O		19	6					V0902293	9080658



Part Change Information List

Date: February 26, 2010

Model	Code	PCIL Nr.	PCIL Correction	Old part number	New part number	Description	Old Q'ty	New Q'ty	Int	3DPC	Page	Index	Set	Set Int	RTB	Note	Ref. Nr.	ECN Nr.
R-C2/AT-C1 1000 Sheet Finisher (SR790)	B408	201002		B4085152	B4085153	PCB:MAIN CONTROL	1	1	X/O		23	6					V0901089	9040417



Part Change Information List

Date: Jun 30, 2010

Model	Code	PCIL Nr.	PCIL Correction	Old part number	New part number	Description	Old Q'ty	New Q'ty	Int	3DPC	Page	Index	Set	Set Int	RTB	Note	Ref. Nr.	ECN Nr.
R-C2/AT-C1 1000 Sheet Finisher (SR790)	B408	201006		B4085255	B4085455	HARNES:STAPLER	1	1	X/O		17	20					V1000497	10030919

Model	Code	PCIL Nr.	PCIL Correction	Old part number	New part number	Description	Old Q'ty	New Q'ty	Int	3DPC	Page	Index	Set	Set Int	RTB	Note	Ref. Nr.	ECN Nr.
R-C2/AT-C1 1000 Sheet Finisher (SR790)	B408	201007			B4082980	DC STEPPER MOTOR:TRANSPORT:UPPER:ASS'Y	0	1			21	15			Y		V1000617	10031516
R-C2/AT-C1 1000 Sheet Finisher (SR790)	B408	201007		B4085281	B4085560	HARNESS:INTERFACE:ASS'Y	1	1	X/O		23	1	A		Y		V1000577	10031400
R-C2/AT-C1 1000 Sheet Finisher (SR790)	B408	201007		B4085217	B4085417	HARNESS:SENSOR:MAIN	1	1	X/O		23	2	A		Y		V1000577	10031400
R-C2/AT-C1 1000 Sheet Finisher (SR790)	B408	201007		B4085247	B4085447	HARNESS:MOTOR:MAIN	1	1	X/O		23	7					V1000577	10031400

Model	Code	PCIL Nr.	PCIL Correction	Old part number	New part number	Description	Old Q'ty	New Q'ty	Int	3DPC	Page	Index	Set	Set Int	RTB	Note	Ref. Nr.	ECN Nr.
R-C2/AT-C1 1000 Sheet Finisher (SR790)	B408	201009		B4085153	B4085154	PCB:MAIN CONTROL	1	1	X/O		23	6					V1001122	10050804

Model	Code	PCIL Nr.	PCIL Correctio	Old part number	New part number	Description	Old Qty	New Qty	Int	3DPC	Page	Index	Set	Set Int	RTB	Note	Ref. Nr.	ECN Nr.
R-C2/AT-C1 1000 Sheet Finisher (SR790)	B408	201011			B8047813	DECAL:CAUTION:PROOF TRAY:PAPER EXIT SUB-UNIT	0	1			25	9			Y		V1001729	10070551

Model	Code	PCIL Nr.	PCIL Correction	Old part number	New part number	Description	Old Q'ty	New Q'ty	Int	3DPC	Page	Index	Set	Set Int	RTB	Note	Ref. Nr.	ECN Nr.
R-C2/AT-C1 1000 Sheet Finisher (SR790)	B408	201012		B4085455	B4085456	HARNESS:STAPLER	1	1	O/O		17	20					V1001347	10060573
R-C2/AT-C1 1000 Sheet Finisher (SR790)	B408	201012		B4085154	B4085155	PCB:MAIN CONTROL	1	1	X/O		23	6					V1002353	10090536

RICOH**Part Change Information List**

Date: February 28, 2011

Model	Code	PCIL Nr.	PCIL Correction	Old part number	New part number	Description	Old Q'ty	New Q'ty	Int	3DPC	Page	Index	Set	Set Int	RTB	Note	Ref. Nr.	ECN Nr.
R-C2/AT-C1 1000 Sheet Finisher (SR790)	B408	201102		B4085163	B4085164	ROM:MAIN CONTROL	1	1	X/O		23	4					V1100059 V1100060	

RICOH**Part Change Information List**

Date: June 30, 2011

Model	Code	PCIL Nr.	PCIL Correction	Old part number	New part number	Description	Old Q'ty	New Q'ty	Int	3DPC	Page	Index	Set	Set Int	RTB	Note	Ref. Nr.	ECN Nr.
R-C2/AT-C1 1000 Sheet Finisher (SR790)	B408	201105		B4084111	B4084116	BASE:STAPLER	1	1	X/O		17	19					V1100707	
R-C2/AT-C1 1000 Sheet Finisher (SR790)	B408	201105		11050310	11050291	HARNESS CLAMP - LWS-3S	1	1	X/O		19	106					V1100703	10090236

RICOH**Part Change Information List**

Date: September 30, 2011

Model	Code	PCIL Nr.	PCIL Correction	Old part number	New part number	Description	Old Q'ty	New Q'ty	Int	3DPC	Page	Index	Set	Set Int	RTB	Note	Ref. Nr.	ECN Nr.
R-C2/AT-C1 1000 Sheet Finisher (SR790)	B408	201109		B4081445	B4081450	BRACKET.COUPLING:GROUND PLATE:FRONT:ASSY	1	1	O/O		3	24					V1100439	11020659



Part Change Information List

Date: November 30, 2011

Model	Code	PCIL Nr.	PCIL Correction	Old part number	New part number	Description	Old Q'ty	New Q'ty	Int	3DPC	Page	Index	Set	Set Int	RTB	Note	Ref. Nr.	ECN Nr.
R-C2/AT-C1 1000 Sheet Finisher (SR790)	B408	201111		B4083211	B4083212	BASE:TRAY	1	1	O/O		19	4					V0902322	
R-C2/AT-C1 1000 Sheet Finisher (SR790)	B408	201111		AX040238	AX040248	DC MOTOR:TRAY:UPPER LOWER:DRIVE:4.8W	1	1	O/O		19	13					V1002859	10100919

Model	Code	PCIL Nr.	PCIL Correction	Old part number	New part number	Description	Old Q'ty	New Q'ty	Int	3DPC	Page	Index	Set	Set Int	RTB	Note	Ref. Nr.	ECN Nr.
R-C2/AT-C1 1000 Sheet Finisher (SR790)	B408	201211		B4082980	B4085610	STEPPER MOTOR:MM42:S3M:T11:ASS'Y	3	3	X/O		21	3					V1201625	12061470



Part Change Information List

Date: April 1, 2015

Model	Code	PCIL Number	PCIL Correction	Old part number	New part number	Description	Old Q'ty	New Q'ty	Int	3DPC	Page	Index	Set	Set Int	RTB	Note	Ref Number	ECN Number
R-C2/AT-C1 1000 Sheet Finisher (SR790)	B408	201503		B3524380	AJ011032	STAPLER:EH-C530R10	1	1	O/O	N	17	22					V1403961	14100673



Part Change Information List

Date: April 28, 2016

Model	Code	PCIL Number	PCIL Correction	Old part number	New part number	Description	Old Q'ty	New Q'ty	Int	3DPC	Page	Index	Set	Set Int	RTB	Note	Ref Number	ECN Number
R-C2_AT-C1 1000 Sheet Finisher_SR790_	B408	201604		A6972144	D5882144	COMPRESSION SPRING:DRIVEN	2	2	O/O	N	7	26					V1600672	
R-C2_AT-C1 1000 Sheet Finisher_SR790_	B408	201604		A6972144	D5882144	COMPRESSION SPRING:DRIVEN	2	2	O/O	N	11	7					V1600672	
R-C2_AT-C1 1000 Sheet Finisher_SR790_	B408	201604		A6972144	D5882144	COMPRESSION SPRING:DRIVEN	2	2	O/O	N	13	17					V1600672	